

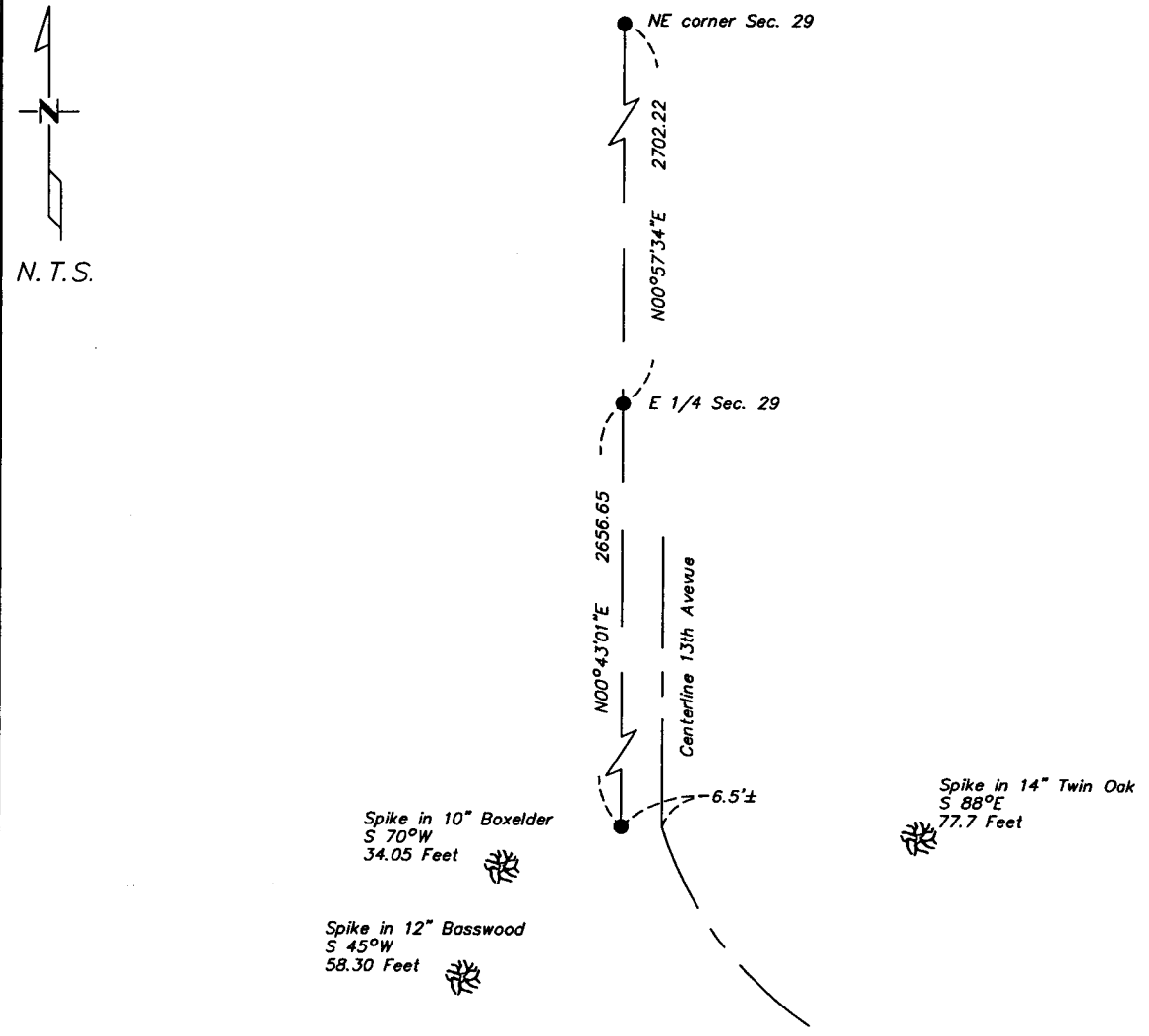
# CERTIFICATE OF LOCATION OF GOVERNMENT CORNER

Northeast Corner of Section 32, Township 133, Range 29  
5TH Principal Meridian, State of Minnesota, County of Cass

At the corner location shown on the sketch:

- On 7/28/04 found a 1/2" Iron pipe
- left monument as found     lowered monument     removed monument (explain)
- On \_\_\_\_\_ placed a \_\_\_\_\_

### SKETCH OF REFERENCE TIES



Statement of evidence relative to this corner location is on back of page.

I hereby certify that this document and the data contained herein was prepared by me or under my direct supervision.

[Signature]      10/20/02  
SIGNATURE      DATE

Registration No. 17253

- Land Surveyor     Professional Engineer
- County Surveyor     County Engineer

OFFICE OF THE COUNTY RECORDER  
County of \_\_\_\_\_

I hereby certify that this document was filed in the Co. Recorders office at \_\_\_\_\_ M. on the \_\_\_\_\_ day of \_\_\_\_\_ A.D., 20\_\_\_\_

County Recorder \_\_\_\_\_  
By \_\_\_\_\_, Deputy  
DOCUMENT NO. \_\_\_\_\_

Statement of Evidence

Northeast Corner, Section 32, T. 133N. R. 29W., 5th P.M.

1870 – Wood post set for corner location.

1949 – Bureau of Land Management set 2" x 3' iron post with brass cap.

2002 – Jim Kramer (Lic. #23668) show monument found on certificate.

2004 – Westwood Professional Services, Inc. finds 1/2" pipe and pulls ties as shown on the face of this certificate.

A000490628

OFFICE OF COUNTY RECORDER  
CASS COUNTY MINNESOTA

CERTIFIED, FILED, AND/OR  
RECORDED ON  
10/25/2004 10:58:23AM

AS DOC #: A000490628  
PAGES: 2  
REC FEES: \$0.00

KATHRYN M. NORBY  
COUNTY RECORDER

BY Kathryn M. Norby  
Hv DEPUTY