

CERTIFICATE OF LOCATION OF GOVERNMENT CORNER

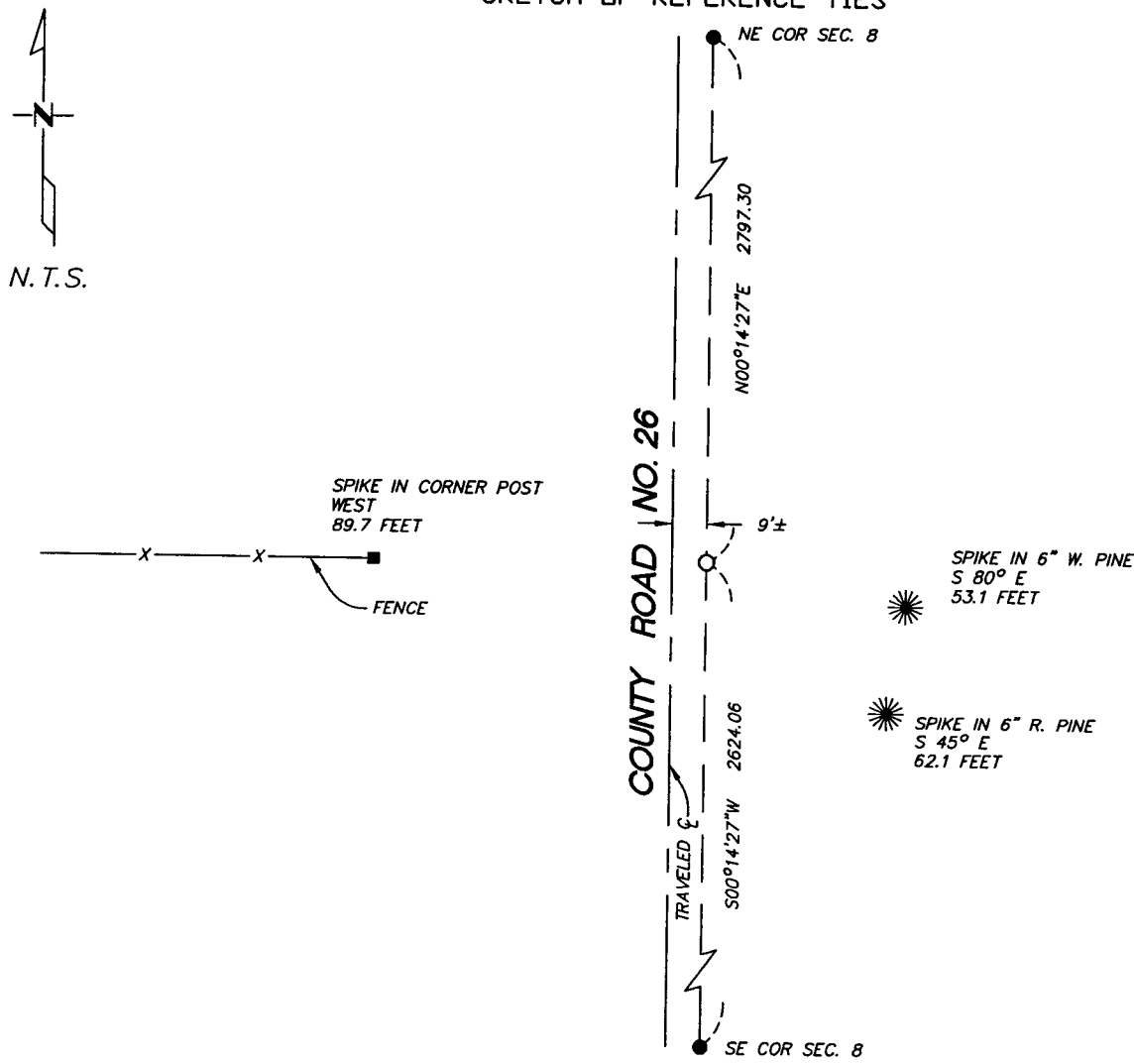
EAST QUARTER _____ Corner of Section 8 , Township 137 , Range 30

5TH Principal Meridian, State of Minnesota, County of Cass

At the corner location shown on the sketch:

- On _____ found a _____
DATE
- left monument as found lowered monument removed monument (explain)
- On 9/28/04 placed a PK NAIL IN BITUMINOUS
DATE

SKETCH OF REFERENCE TIES



Statement of evidence relative to this corner location is on back of page.

I hereby certify that this document and the data contained herein was prepared by me or under my direct supervision.

Bruce [Signature] 10/1/04
SIGNATURE DATE

Registration No. 17253

- Land Surveyor Professional Engineer
 County Surveyor County Engineer

OFFICE OF THE COUNTY RECORDER
 County of _____

I hereby certify that this document was filed in the Co. Recorders office at _____ M. on the _____ day of _____ A.D., 20____

County Recorder _____

By _____, Deputy

DOCUMENT NO. _____

Statement of Evidence

East Quarter, Section 8, T. 137N. R. 30W., 5th P.M.

1870 - Wood post was set for corner.

1911 - A.W. Moulster found corner set by Curo from W. Pine B.T. 2x4 post marked 1/4. (also on microfilm - roll 105, Book 50, P. 91)
County Survey Record Book "B", p. 282-285. (Survey Record No. 29)

2004 - Westwood Professional Services, Inc. set PK nail in bituminous referencing Survey Record No. 29, Book "B", p. 284. Position fits very well with old fence line occupation running west. Ties to which are shown on the face of this certificate.

A000489888

**OFFICE OF COUNTY RECORDER
CASS COUNTY MINNESOTA**

**CERTIFIED, FILED, AND/OR
RECORDED ON**

10/05/2004 01:19:00PM

**AS DOC #: A000489888
PAGES: 2
REC FEES: \$0.00**

**KATHRYN M. NORBY
COUNTY RECORDER**

BY Kathryn M. Norby
TV DEPUTY