

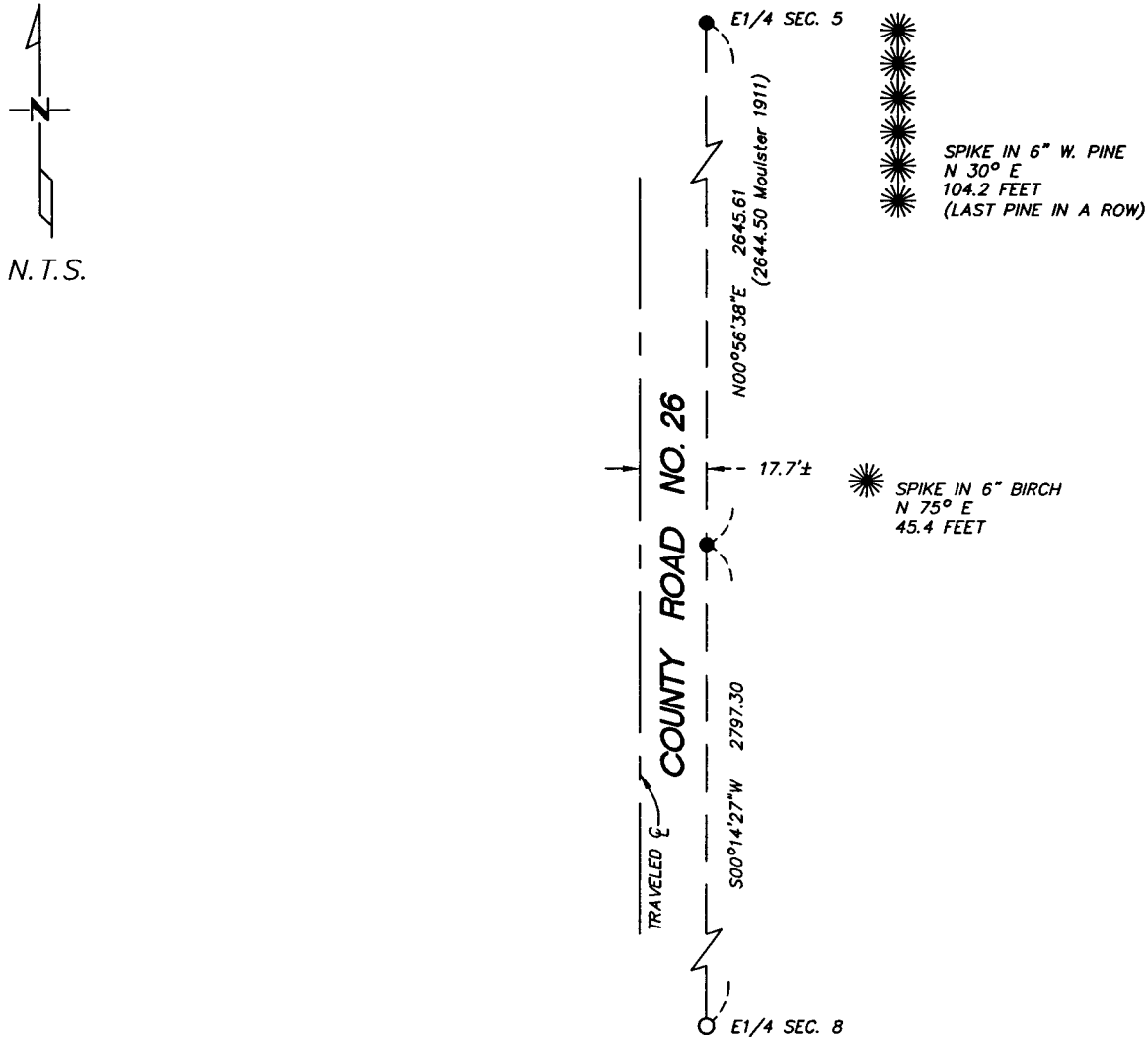
CERTIFICATE OF LOCATION OF GOVERNMENT CORNER

NORTHEAST _____ Corner of Section 8 , Township 137 , Range 30
5TH Principal Meridian, State of Minnesota, County of Cass

At the corner location shown on the sketch:

- On 9/28/04 found a 3/8" REBAR DOWN 0.1' BELOW GRAVEL SHOULDER
DATE
- left monument as found lowered monument removed monument (explain)
- On _____ placed a _____
DATE

SKETCH OF REFERENCE TIES



Statement of evidence relative to this corner location is on back of page.

I hereby certify that this document and the data contained herein was prepared by me or under my direct supervision.

Bruce Quinn 10/1/04
SIGNATURE DATE

Registration No. 17253

- Land Surveyor Professional Engineer
 County Surveyor County Engineer

OFFICE OF THE COUNTY RECORDER
 County of _____

I hereby certify that this document was filed in the Co. Recorders office at _____ M. on the _____ day of _____ A.D., 20____

County Recorder _____

By _____, Deputy

DOCUMENT NO. _____

Statement of Evidence

Northeast Corner, Section 8, T. 137N. R. 30W., 5th P.M.

1870 - Wood post was set for corner.

1911 - A.W. Moulster set wood post. (microfilm - roll 105, Book 50, P. 84)
County Survey Record Book "B", p. 282-285. (Survey Record No. 29)

1969 - Cass County Highway Dept. found 2" pipe 17.7' east of P.O.T.

2004 - Westwood Professional Services, Inc. found 3/8" rebar fitting reasonably well with Survey Record No. 29, Book "B", p. 284 and County Hwy P.O.T. tie. The ties to which are shown on the front of this certificate.

A000489887

OFFICE OF COUNTY RECORDER
CASS COUNTY MINNESOTA

CERTIFIED, FILED, AND/OR
RECORDED ON
10/05/2004 01:18:59PM

AS DOC #: A000489887
PAGES: 2
REC FEES: \$0.00

KATHRYN M. NORBY
COUNTY RECORDER

BY Kathryn M. Norby
HV DEPUTY