

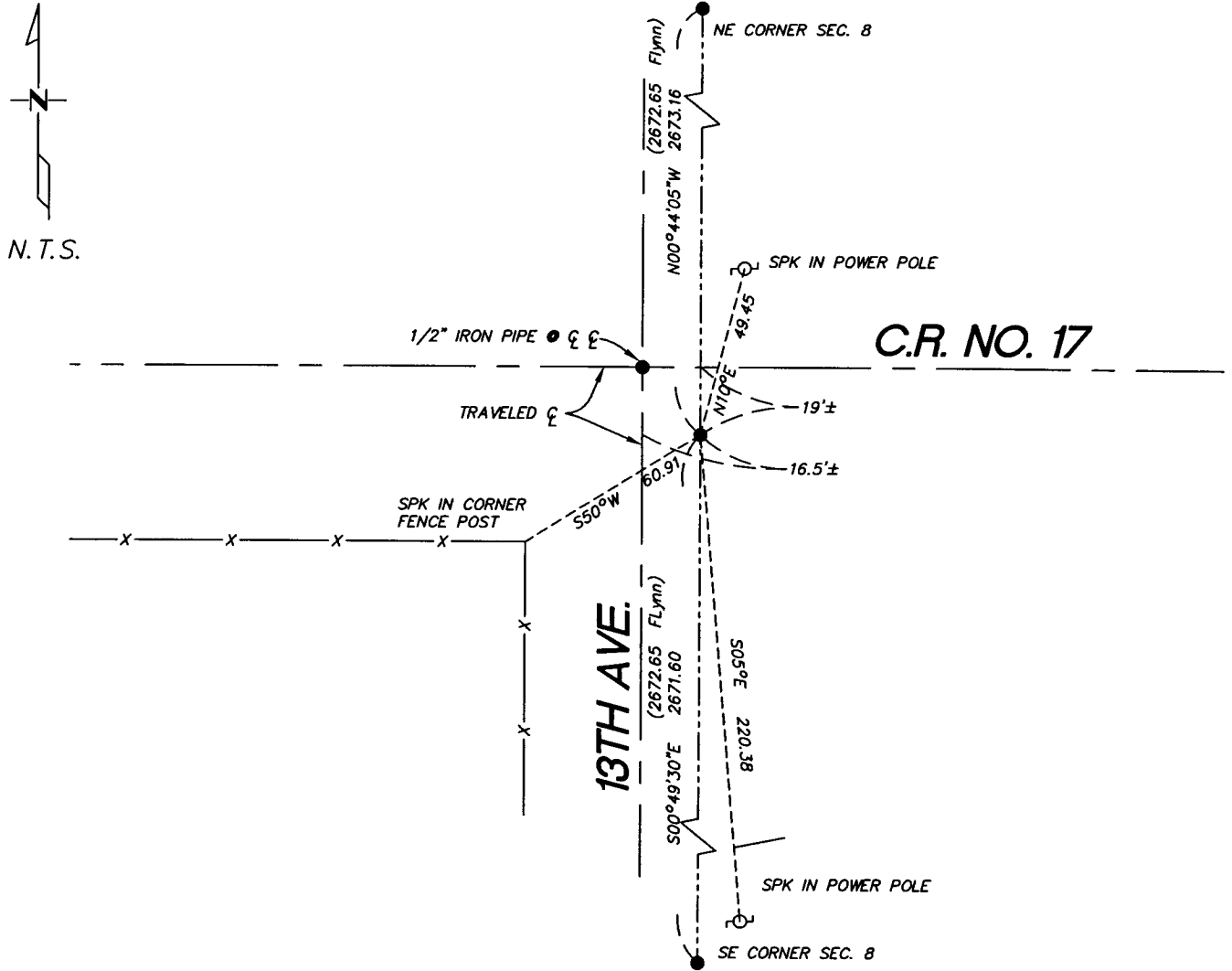
CERTIFICATE OF LOCATION OF GOVERNMENT CORNER

East Quarter _____ Corner of Section 8, Township 136, Range 29
5TH Principal Meridian, State of Minnesota, County of Cass

At the corner location shown on the sketch:

- On 5/13/04 found a 2' iron pipe down 1.6' feet
DATE
- left monument as found lowered monument removed monument (explain)
- On _____ placed a _____
DATE

SKETCH OF REFERENCE TIES



Statement of evidence relative to this corner location is on back of page.

I hereby certify that this document and the data contained herein was prepared by me or under my direct supervision.

Bruce Linn 8/17/09
SIGNATURE DATE

Registration No. 17253

- Land Surveyor Professional Engineer
- County Surveyor County Engineer

OFFICE OF THE COUNTY RECORDER
 County of _____

I hereby certify that this document was filed in the Co. Recorders office at _____ M. on the _____ day of _____ A.D., 20____

County Recorder _____

By _____, Deputy

DOCUMENT NO. _____

Statement of Evidence

East Corner, Section 8, T. 136N. R. 29W., 5th P.M.

1870 – Wood post was set for corner.

1918 – J.H. Flynn set 2.5"x30" iron monument. County Book "C", P. 138.
(County Resurvey "E-22")

2004 – Westwood Professional Services, Inc. found 2" iron pipe fitting reasonably well with J.H. Flynn survey dated June 4, 1918, the ties to which are shown on the front of this certificate.

A000488022

OFFICE OF COUNTY RECORDER
CASS COUNTY MINNESOTA

CERTIFIED, FILED, AND/OR
RECORDED ON
08/23/2004 09:04:05AM

AS DOC #: A000488022
PAGES: 2
REC FEES: \$0.00

KATHRYN M. NORBY
COUNTY RECORDER

BY Kathryn M. Norby
HV DEPUTY