

# CERTIFICATE OF LOCATION OF GOVERNMENT CORNER

North 1/4 Corner \_\_\_\_\_ Corner of Section 8 , Township 136 , Range 29  
5TH Principal Meridian, State of Minnesota, County of Cass

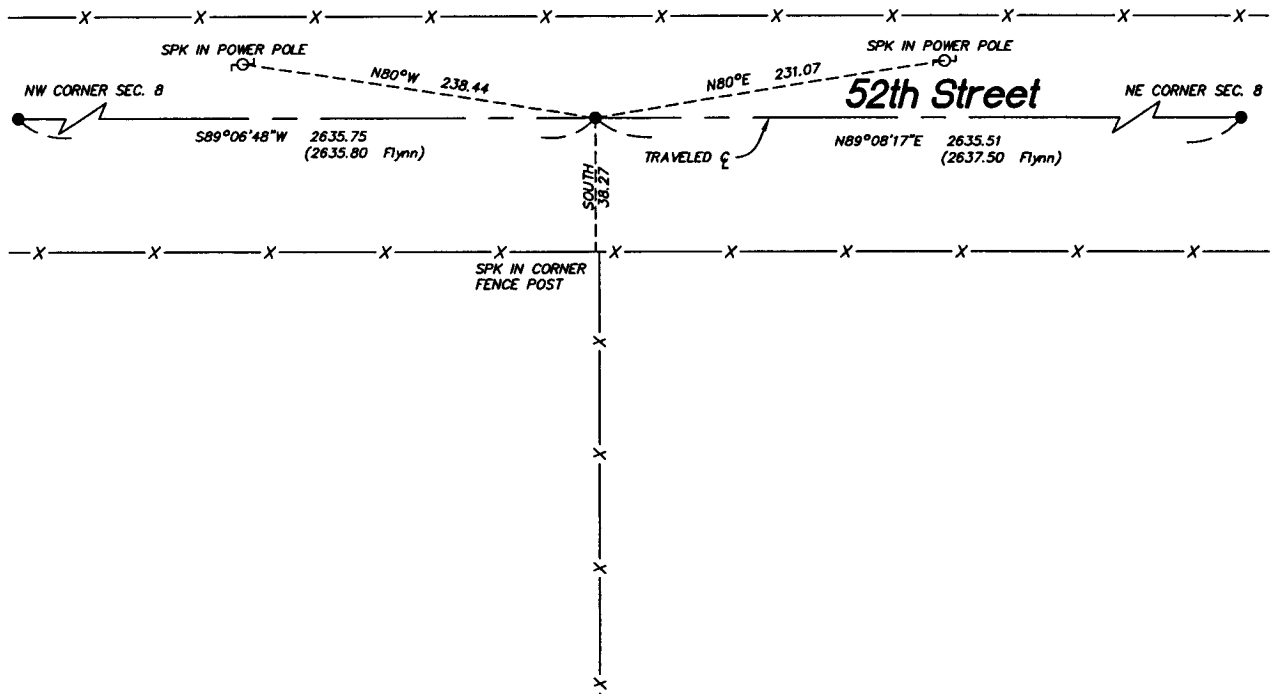
At the corner location shown on the sketch:

- On 5/13/04 found a 1/2" Iron pipe  
DATE
- left monument as found     lowered monument     removed monument (explain)
- On \_\_\_\_\_ placed a \_\_\_\_\_  
DATE

## SKETCH OF REFERENCE TIES



N.T.S.



Statement of evidence relative to this corner location is on back of page.

I hereby certify that this document and the data contained herein was prepared by me or under my direct supervision.

Bruce Linn                      5/13/04  
SIGNATURE                                      DATE

Registration No. 17253

- Land Surveyor     Professional Engineer
- County Surveyor     County Engineer

OFFICE OF THE COUNTY RECORDER  
County of \_\_\_\_\_

I hereby certify that this document was filed in the Co. Recorders office at \_\_\_\_\_ M. on the \_\_\_\_\_ day of \_\_\_\_\_ A.D., 20\_\_\_\_

County Recorder \_\_\_\_\_

By \_\_\_\_\_, Deputy

DOCUMENT NO. \_\_\_\_\_

Statement of Evidence

North 1/4 Corner, Section 8, T. 136N. R. 29W., 5th P.M.

1870 - Wood post was set for corner.

1916 - John Pomasec set 2.25" Galv. iron pipe (microfilm - roll 105, Bk 62, p. 42)

1916 - F.F. Wilson set corner from witnesses. (microfilm - roll 115 Bk 76, p. 18)

1918 - J. H. Flynn set 2.5" x 48" iron monument (County Resurvey "E-22")  
County Book C, P. 138.

2004 - Westwood Professional Services, Inc. found 1/2" iron pipe that fits reasonably well with Flynn survey. Ties to which are shown on the front of this certificate.

A000488021

OFFICE OF COUNTY RECORDER  
CASS COUNTY MINNESOTA

CERTIFIED, FILED, AND/OR  
RECORDED ON  
08/23/2004 09:04:04AM

AS DOC #: A000488021  
PAGES: 2  
REC FEES: \$0.00

KATHRYN M. NORBY  
COUNTY RECORDER

BY Kathryn M. Norby DEPUTY  
HW