

CERTIFICATE OF LOCATION OF GOVERNMENT CORNER

WITNESS CORNER TO MEANDER Corner of Section 8/9, Township 142 N, Range 31 W, 5th P.M.

STATE OF MINNESOTA, COUNTY OF CASS

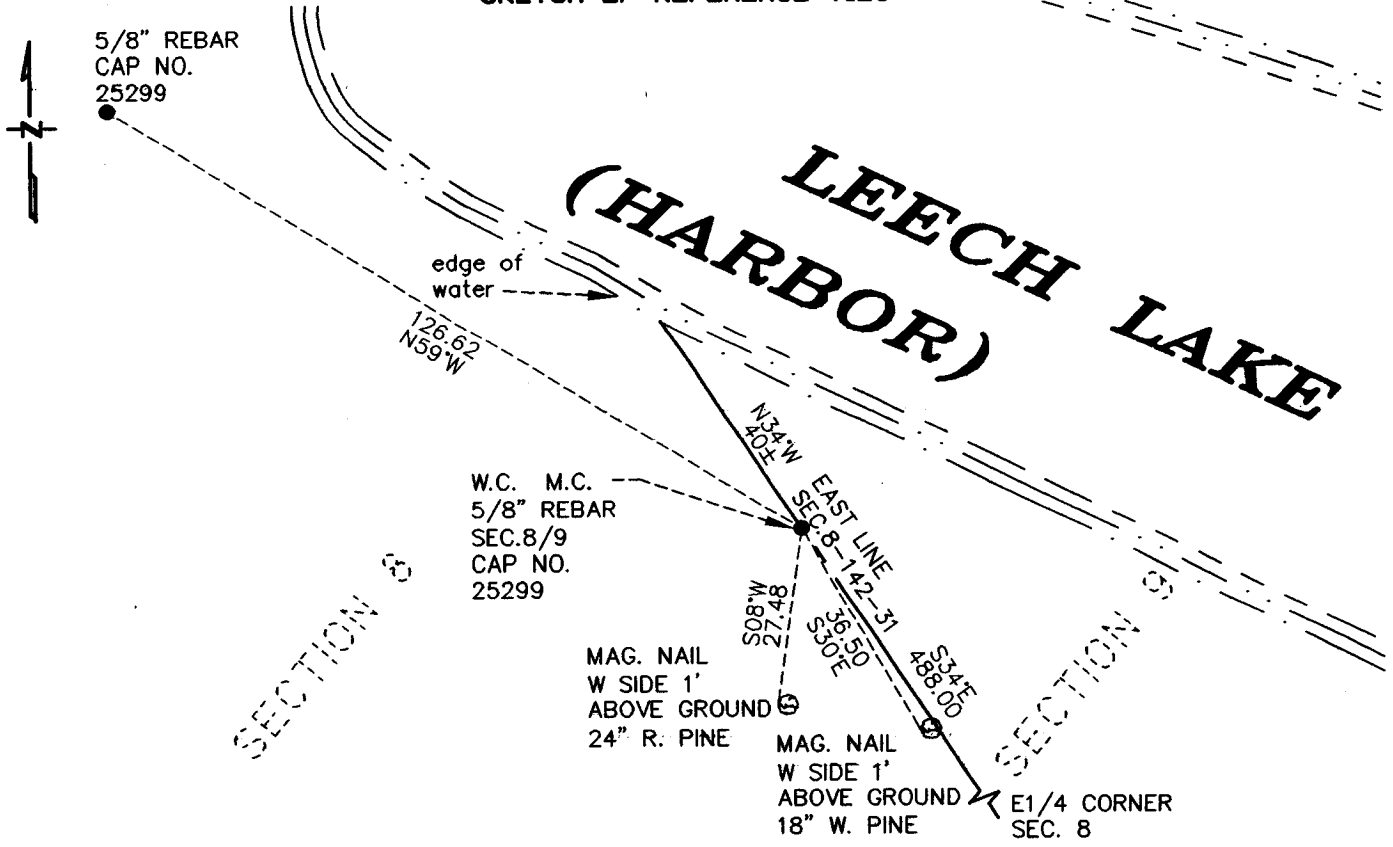
At the corner location shown on the sketch:

On _____ found a _____

left monument as found, lowered monument, removed monument (explain)

On 5/4/04 placed a 5/8" REBAR CAPPED WITH NO. 25299

SKETCH OF REFERENCE TIES



Statement of evidence relative to this corner location is on back of page.

I hereby certify that this document and the data contained herein was prepared by me or under my direct supervision.

Craig P. Schultz signature 7/9/04 date

Registration No. 25299

- Land Surveyor
- Professional Engineer
- County Surveyor
- County Engineer

OFFICE OF THE COUNTY RECORDER

County of _____

I hereby certify that this document was filed in the Co. Recorders office at _____ M. on the _____ day of _____ A.D., 20__

County Recorder _____ by, _____, Deputy

DOCUMENT NO. _____

Statement of Evidence:

Witness Corner to Meander Corner #47, corner common to Sections 8 and 9, Township 142 North, Range 31 West, Cass County, Minnesota.

1873 P.H. Conger, U.S. Deputy Surveyor, originally established the Meander corner position with a wood post while subdividing Township 142 North, Range 31 West and established corner ties as follows:

6" Yellow Pine South 10 degrees West 200 Links
8" Yellow Pine South 03 degrees East 244 Links

1917 County Surveyor's record Book B pages 521-526 shows survey by E.B Horst. He indicates setting a 2"x 48" Boiler flue as a Witness Corner 178.3' South of this Meander Corner. The notes do indicate stumps of both BT's were found but do not indicate that any bearing trees were marked.

1927 a County resurvey in Records Office file cabinet E Number 58 shows a survey by John Greene. The plat indicates an iron monument in place for the Witness corner to the Meander corner.

2004 on May 4, a survey crew from RLK-Kuusisto doing a survey for a plat of KABEKONA BEACH searched for the iron monument from 1927 and found no evidence. Using found monuments on the south line of Section 8 and on the east line of the plat of KABEKONA SPRINGS ESTATES and the information in the resurvey by John Greene RLK-Kuusisto re-established this corner location and set a 5/8" rebar for the corner. Reference ties are as follows:

24" Red Pine Mag Nail set 1' above ground South 08 degrees West 27.48 feet

18" White Pine Mag Nail set 1' above ground South 30 degrees East 36.50 feet

5/8" rebar North 59 degrees West 126.62 feet

A000487353
OFFICE OF COUNTY RECORDER
CASS COUNTY MINNESOTA
CERTIFIED, FILED, AND/OR
RECORDED ON
08/06/2004 11:09:26AM
AS DOC #: A000487353
PAGES: 2
REC FEES: \$0.00

KATHRYN M. NORBY
COUNTY RECORDER
BY Kathryn M. Norby DEPUTY
TV