

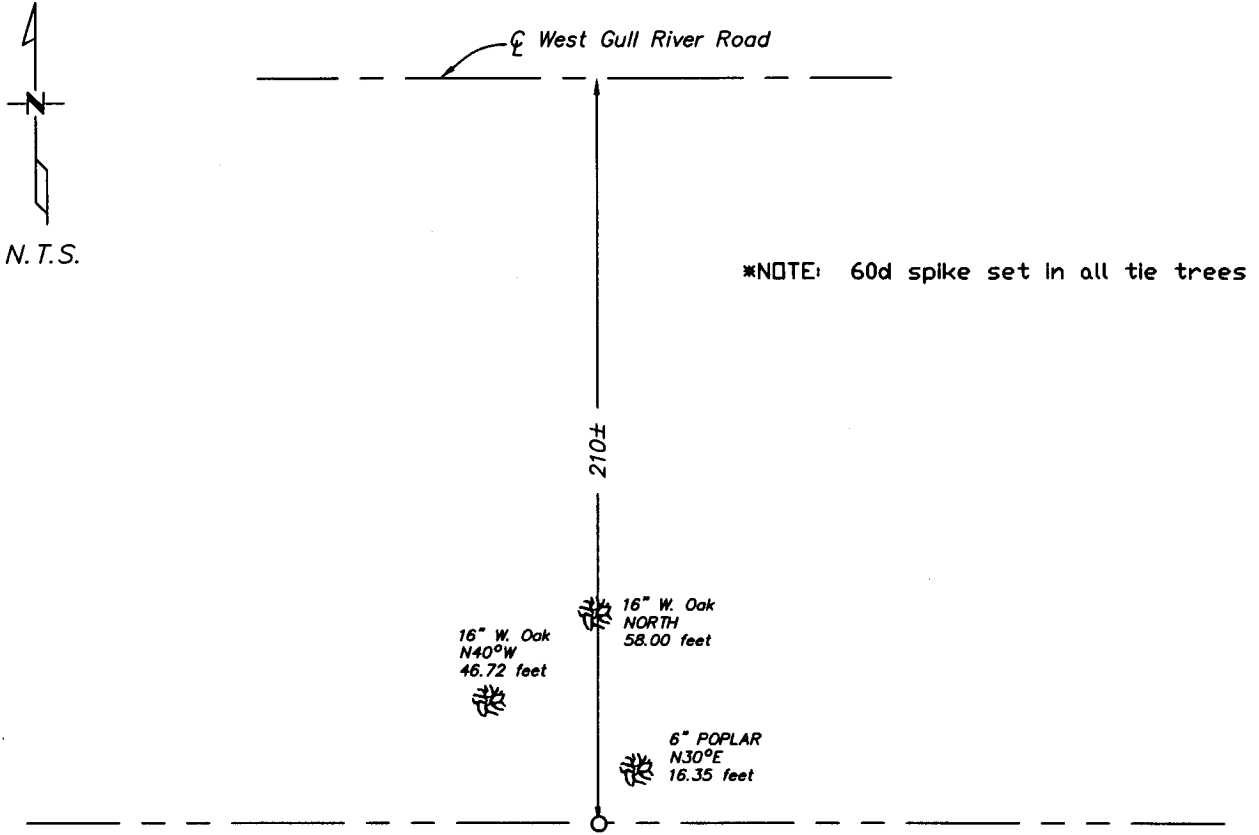
CERTIFICATE OF LOCATION OF GOVERNMENT CORNER

North Quarter _____ Corner of Section 20 , Township 133 , Range 29
5TH Principal Meridian, State of Minnesota, County of Cass

At the corner location shown on the sketch:

- On _____ found a _____
DATE _____
- left monument as found lowered monument removed monument (explain)
- On 2/25/04 placed a 1/2" Iron pipe capped #17253
DATE _____

SKETCH OF REFERENCE TIES



N.T.S.

*NOTE: 60d spike set in all tie trees

Statement of evidence relative to this corner location is on back of page.

I hereby certify that this document and the data contained herein was prepared by me or under my direct supervision.

Bruce J. [Signature] 4/22/04
SIGNATURE DATE

Registration No. 17253

- Land Surveyor Professional Engineer
- County Surveyor County Engineer

OFFICE OF THE COUNTY RECORDER
County of _____

I hereby certify that this document was filed in the Co. Recorders office at ____ M. on the ____ day of _____ A.D., 20__

County Recorder _____
By _____, Deputy

DOCUMENT NO. _____

Statement of Evidence

North Quarter, Section 20, T. 133N. R. 29W., 5th P.M.

1870 - Wood post was set for corner.

2004 - Westwood Professional Services, Inc. sets 1/2" capped iron pipe #17253 based on Dean M. Anderson lost position.

A000483086

OFFICE OF COUNTY RECORDER
CASS COUNTY MINNESOTA

CERTIFIED, FILED, AND/OR
RECORDED ON
05/04/2004 12:52:08PM

AS DOC #: A000483086
PAGES: 2
REC FEES: \$0.00

KATHRYN M. NORBY
COUNTY RECORDER

BY Kathryn M. Norby DEPUTY