

CERTIFICATE OF LOCATION OF GOVERNMENT CORNER

I hereby certify that this survey, plan, or report was prepared by me or under my direct supervision and that I am a duly Licensed Land Surveyor under the laws of the State of Minnesota

Terry L. Freeman
TERRY L. FREEMAN

Date: 2/6/04 License No: 21367

OFFICE OF THE COUNTY RECORDER
County of CASS

I hereby certify that this document was filed in the Office of the County Recorder at _____ o'clock _____ M. on the _____ day of _____, 20____ A.D.

County Recorder _____

By: _____, Deputy
DOCUMENT NO. _____

MEANDER CORNER Corner of Section 22&27, Township 142, Range 30, 5TH P.M.
 On 1/13/04 found a G.L.O. BRASS CAP MONUMENT 6" ABOVE GROUND

left monument as found, lowered monument, removed monument (explain)

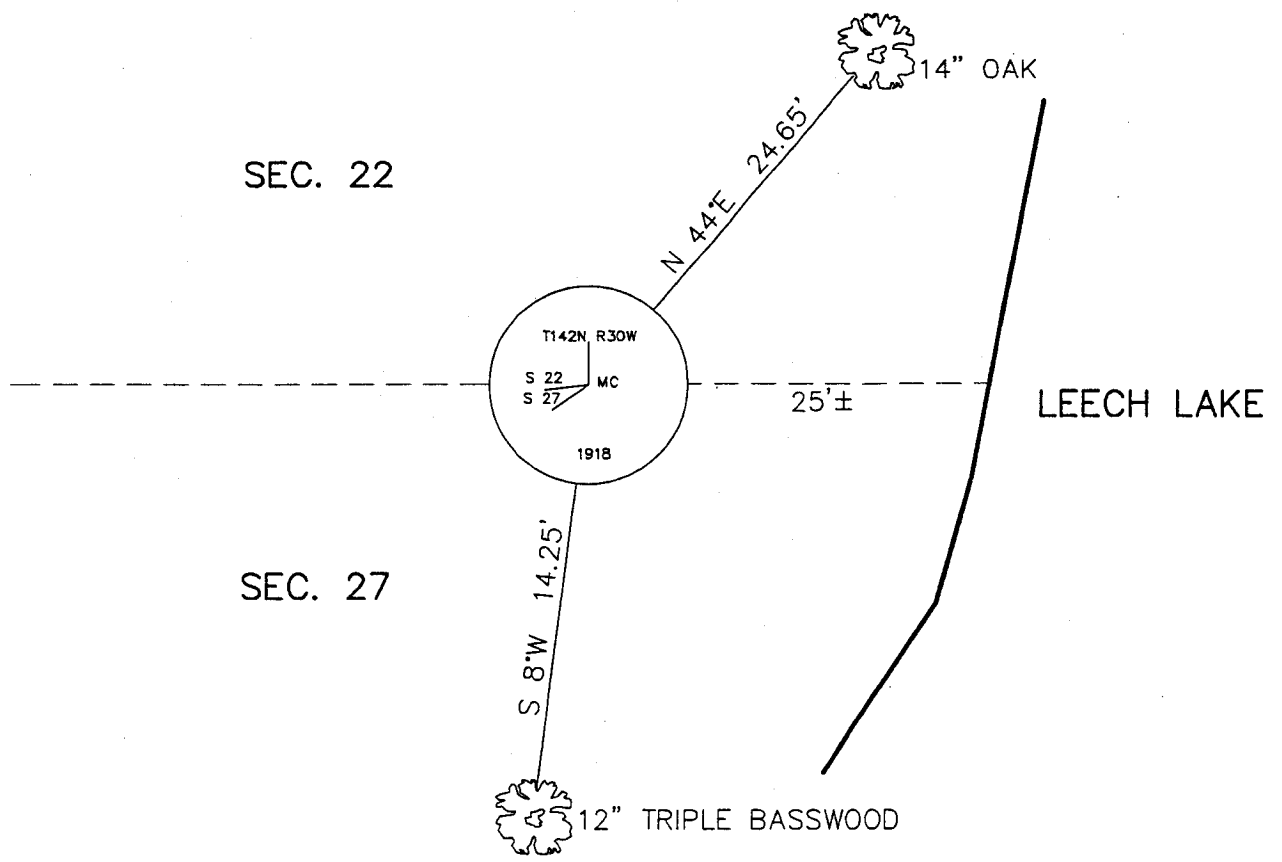
On _____ placed a _____

decl: 5° EAST (ASSUMED)

SKETCH OF REFERENCE TIES

INDEX NO. R-14/15

Not to Scale



ALL DISTANCES ARE HORIZONTAL TO NAIL IN BASE OF BEARING TREE.

Statement of evidence for this corner position is on the back of this page

STATEMENT OF EVIDENCE

Index No. R - 14/15

Meander Corner, Section 22 and 27, Township 142 North,
Range 30 West, Cass County, Minnesota

- 1873 P.H. Conger, U.S. Deputy Surveyor, originally established this position while surveying the exterior and subdivision lines of Township 142 North, Range 30 West. A post was set for the meander corner position with the following witnesses: A 10 inch White Oak, North 31 degrees West, 11 links; A 4 inch White Oak, South 22 degrees West, 90 links.
- 1918 U.S. General Land Office re-established this original corner position while performing a re-survey of a portion of the exterior and subdivision lines of Township 142 North, Range 30 West. An iron post, 3 feet long, 1 inch in diameter with brass cap was set for the original meander corner position with the following witnesses: A 6 inch Oak, North 2 degrees East, 44 links; A 4 inch Ash, South 20 degrees 15 minutes West, 41 links.
- 1918 U.S. General Land Office continued East along the line between Sections 22 and 27 a distance of 10.02 chains past the original meander corner to the West shore of Leech Lake. An iron post, 3 feet long, 1 inch diameter, 26 inches in the ground, with brass cap was set for the new meander corner with the following witnesses: A 6 inch Poplar, South 80 degrees West, 51 links; A 6 inch Poplar, South 80 degrees West, 51 links; A 6 inch Poplar, North 8 degrees 45 minutes West, 12 links.
- 1969 R. F. Schneider, RLS#5740, found a GLO brass cap monument at the original meander corner position. He also found a rotted 8 inch oak stump bearing North 2 degrees East, 29 feet with scribing and blaze evident.
- 1969 R. F. Schneider, RLS #5740, found a GLO brass cap monument at the new meander corner position on the shore of Leech Lake.
- 2003 December 3, Landecker and Associates, Inc. survey crew found a GLO brass cap monument at the new meander corner position and established the following witnesses: A 14 inch Oak, North 44 degrees East, 24.65 feet; A 12 inch Triple Basswood, South 8 degrees West, 14.25 feet.

A000483078

OFFICE OF COUNTY RECORDER
CASS COUNTY MINNESOTA

CERTIFIED, FILED, AND/OR
RECORDED ON
05/04/2004 12:52:00PM

AS DOC #: A000483078
PAGES: 2
REC FEES: \$0.00

KATHRYN M. NORBY
COUNTY RECORDER

BY Kathryn M. Norby *thv*
DEPUTY