

# CERTIFICATE OF LOCATION OF GOVERNMENT CORNER

I hereby certify that this survey, plan, or report was prepared by me or under my direct supervision and that I am a duly Licensed Land Surveyor under the laws of the State of Minnesota.

*Ferry L. Freeman*  
FERRY L. FREEMAN

Date: 2/6/04 License No: 21367

OFFICE OF THE COUNTY RECORDER  
County of CASS

I hereby certify that this document was filed in the Office of the County Recorder at \_\_\_\_\_ o'clock \_\_\_\_\_ M. on the \_\_\_\_\_ day of \_\_\_\_\_, 20\_\_\_\_ A.D.

County Recorder \_\_\_\_\_

By: \_\_\_\_\_, Deputy  
DOCUMENT NO. \_\_\_\_\_

NORTHEAST Corner of Section 28, Township 142, Range 30, 5TH P.M.

On 01/13/04 found a NOTHING DUE TO WATER DEPTH

left monument as found,  lowered monument,  removed monument (explain)

On \_\_\_\_\_ placed a \_\_\_\_\_

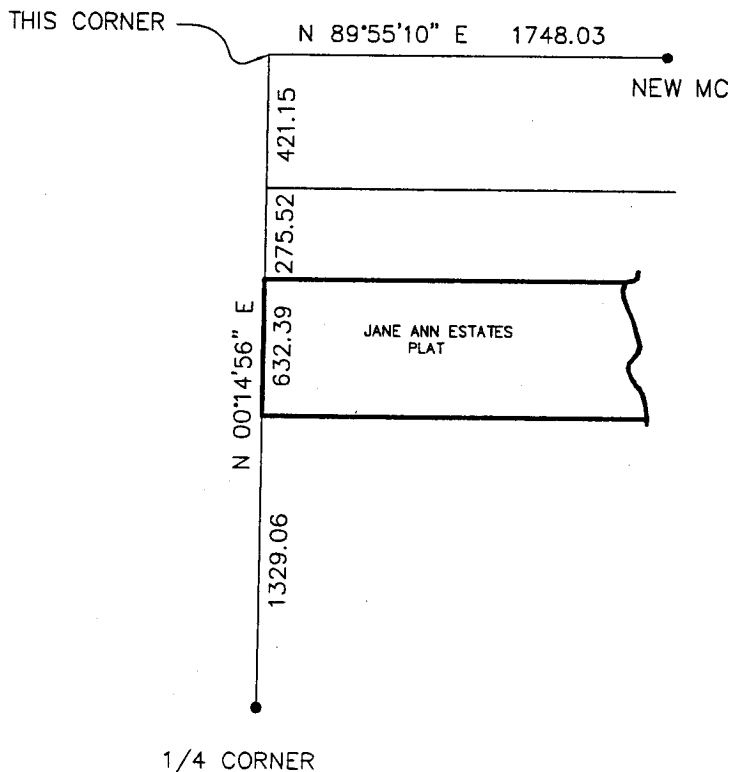
decl: 5° EAST (ASSUMED)

## SKETCH OF REFERENCE TIES

INDEX NO. R-13

Not to Scale

NOT POSSIBLE TO SET MONUMENT OR TAKE TIES



Statement of evidence for this corner position is on the back of this page

STATEMENT OF EVIDENCE

Index No. R - 13

Northeast Corner, Section 28, Township 142 North, Range 30 West, Cass County, Minnesota

- 1873 P.H. Conger, U.S. Deputy Surveyor, originally established this position while surveying the interior subdivision lines of Township 142 North, Range 30 West. A post was set with the following witnesses: A 6 inch Tamarack, South 71 degrees East, 90 links; A 5 inch Tamarack, North 74 degrees West, 70 links; A 3 inch Tamarack, South 10 degrees West, 19 links; A 7 inch Tamarack, North 1 degree East, 111 links.
- 1918 U.S. General Land Office, while performing a re-establishment of a portion of the exterior and subdivisional lines of Township 142 North, Range 30 West, set an iron post, 3 feet long, 2 inch diameter, with a brass cap. Pits were dug 18x18x12 inches in each section 5 ½ feet in distance and the earth scattered.
- 1969 R.F. Schneider, RLS#5740, found the remains of a 5 inch square Tamarack post with clear scribing. He then remonumented this position with a 4 inch square Tamarack post.
- 2004 January 13, Landecker and Associates, Inc. survey crew found the position for this corner, which now falls in ± 10 feet of water. They did, however, tie into survey work performed by R. F. Schneider, RLS#5740 in 1969; and they accepted his position for this corner as found and remonumented in 1969.

A000483077

OFFICE OF COUNTY RECORDER  
CASS COUNTY MINNESOTA

CERTIFIED, FILED, AND/OR  
RECORDED ON  
05/04/2004 12:51:59PM

AS DOC #: A000483077  
PAGES: 2  
REC FEES: \$0.00

KATHRYN M. NORBY  
COUNTY RECORDER

BY Kathryn M Norby HV  
DEPUTY