

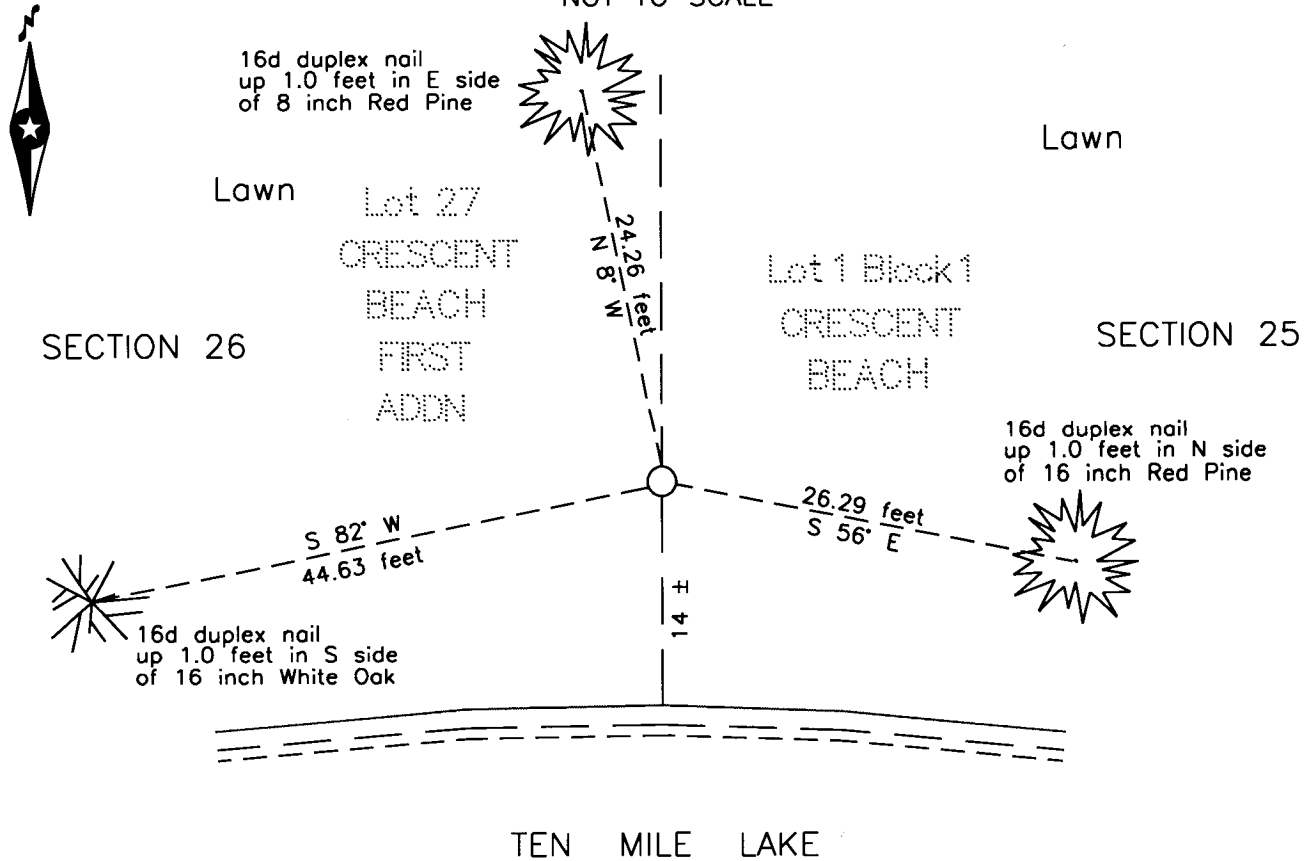
CERTIFICATE OF LOCATION OF GOVERNMENT CORNER

Meander corner #7 of Section 25 & 26, Township 141 N., Range 31 W., 5th P.M.
 State of Minnesota, County of Cass

At the corner location shown on the sketch:

On 8 Jan. 2003 found a 2 inch outside diameter iron pipe, with plumbers cap,
up 2.1 foot, 14 feet, more or less, north of the shore of Ten Mile Lake
 left monument as found lowered monument removed monument (explain)
 On _____ placed _____

SKETCH OF REFERENCE TIES
 NOT TO SCALE



NOTE:
 All bearings are true

Statement of evidence relative to this corner location is on the back of this page.

I hereby certify that this survey, plan or report was prepared by me or under my direct supervision and that I am a duly Licensed Land Surveyor under the laws of the State of Minnesota.

Robert L. Kovanen
 Robert L. Kovanen, Cass County Surveyor
 Date 4/14/04 MN License No. 16459

OFFICE OF THE COUNTY RECORDER
 COUNTY OF CASS, STATE OF MINNESOTA

I hereby certify that this document was filed in the Co. Recorder's office at _____ M. on the _____ day of _____ A.D., 200____

County Recorder _____
 By _____, Deputy
 DOCUMENT NUMBER _____

Statement of Evidence

T,U-21, Meander corner Number 7 on the line common to Sections 25 and 26, north shore of Ten Mile Lake, Township 141 North, Range 31 West, 5th Principal Meridian.

- Aug. 1873 P.H.Conger, General Land Office (GLO) Deputy Surveyor set a post for the original corner and referenced it as follows:
 24" Y.Pine 70° E 61 links (40.3 feet) 24" Y.Pine N 71° W 9 links (5.9 feet)
 Said records are on file with the Secretary of State Office, St. Paul, Minnesota, copies are filed with the Cass County Surveyor's Office (CCSO).

- Oct. 1911 J. Curo, Cass County Surveyor, LS 1428, Survey Record No. 171, Book A, page 386 on file in the CCSO, states "set a 2 X 48 inch galvanized iron pipe capped on top and set in a bed of cement, both meander corner No 15 and No 7 are set from old gov't bearing trees."

- July 1912 J. Curo, Cass County Surveyor, LS 1428, Survey Record No. 323, Book B, page 418 on file in the CCSO, states "We find the stumps of both old U.S. bearing trees and we also find a 2 X 48 inch galvanized iron pipe capped on top and set its full length in a bed of concrete and sand, previously set by me". The illustration on page 420 indicates a monument 637.30 south of MC No. 15. The following new witnesses were established:
 New B.T. N 85° W 39.40 feet 3" Oak S 25° E 6.15 feet

- Sept. 1916 E.B. Horst, Cass County Deputy Surveyor, LS 376, Microfilm roll 11, Field Book 80, page 33 on file in the CCSO indicates a found I.M.

- July 1920 E.B. Horst, Cass County Deputy Surveyor, LS 376, Survey Record No. 467, Book C, page 463 on file in the CCSO, states "Find line est. with capped I.M. at M.C. on Ten Mile & also on Portage lakes."

- July 1921 E.B. Horst, Cass County Deputy Surveyor, LS 376, County Resurvey Plat E-53, recorded in the Cass County Recorders Office (CCRO) as Document Number 67333 indicates this corner as "Known corners set from old Bearing Trees in this or previous surveys, Iron Monuments."

- July 1917 J. Greene, Surveyor, Plat of Crescent Beach, recorded in the CCRO as Document Number 58447 indicates a 2 ½" x 48" I.M. Government Meander Corner.

- Sept. 1936 J. Curo, Surveyor, LS 1428, Plat of CRESCENT BEACH FIRST ADDITION, recorded in the CCRO as Document Number 102571 indicates U.S. M.C.

- 1976 Cass County Land Corner Record on file in the CCSO, indicates a 2 ½ x 48" I.M. was recovered by the Cass County Highway Department

- Jan. 2003 B.Hippen and T.Anderson, technicians, CCSO, notes on file in the CCSO, found a 2 inch ODIP, up 2.1 feet. The monument, recovered and established references for the position are shown on the face of this document.

Analysis of the recovered record data, field evidence and survey measurements, indicates that the monument set in 1911 by John Curo and recovered in 2003 by the CCSO is the correct perpetuation of this corner.

A000482298

**OFFICE OF COUNTY RECORDER
CASS COUNTY MINNESOTA**

**CERTIFIED, FILED, AND/OR
RECORDED ON
04/15/2004 10:17:27AM**

**AS DOC #: A000482298
PAGES: 2
REC FEES: \$0.00**

**KATHRYN M. NORBY
COUNTY RECORDER**

Page 2 of 2

Pages BY Kathryn M Norby th
DEPUTY