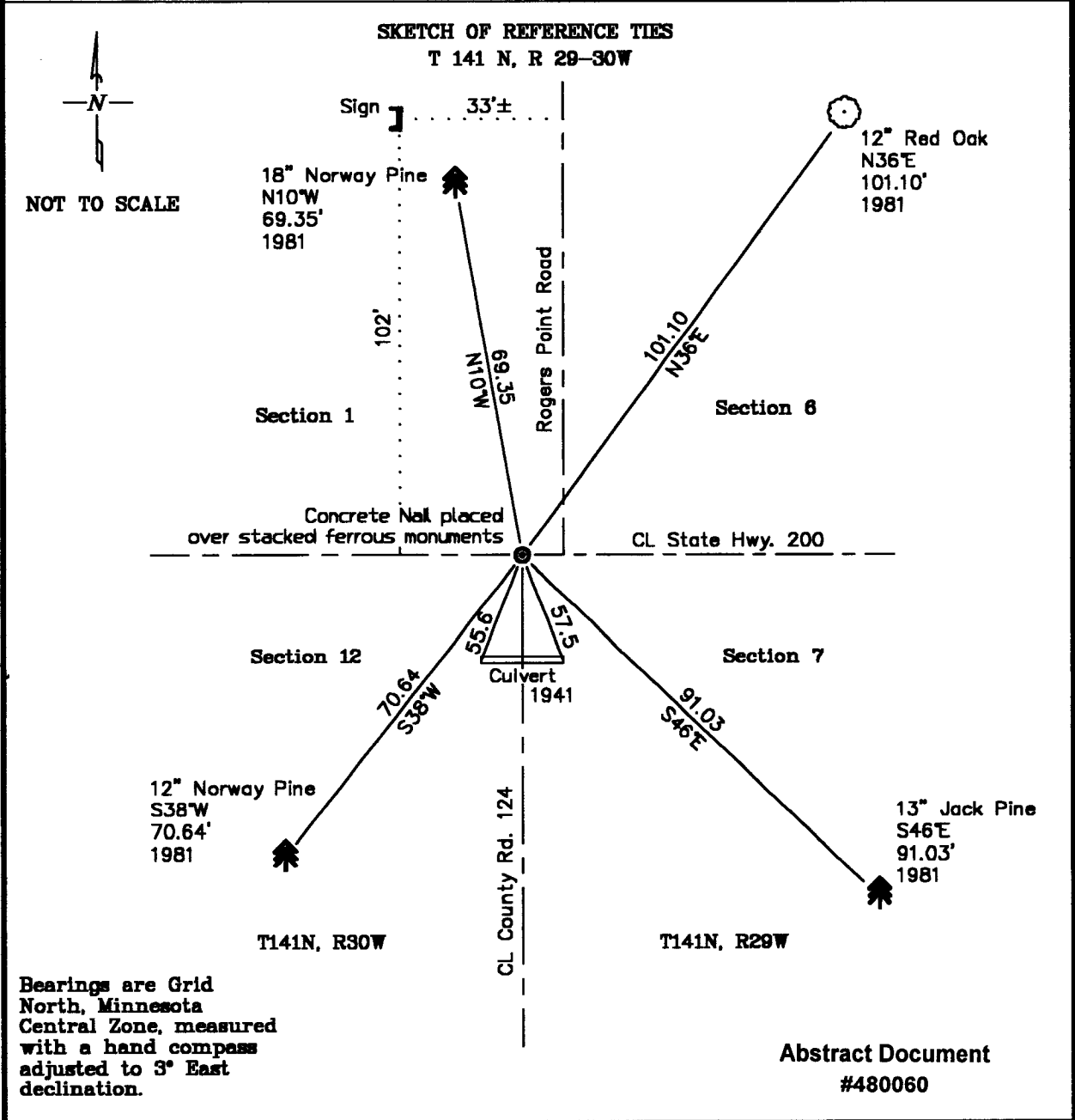


### CERTIFICATE OF LOCATION OF GOVERNMENT CORNER

Section Corner common to Sections 6 and 7, Township 141 North, Range 29 West, and Sections 1 and 12, Township 141 North, Range 30 West of the 5th Principal Meridian, Cass County, Minnesota.

The section corner is accepted as a direct perpetuation of the GLO corner.



Statement of evidence relative to this corner location is on the back of this page

I hereby certify that this survey, plan, or report was prepared by me or under my direct supervision and that I am a duly Licensed Land Surveyor under the laws of the State of Minnesota.

*LaVerne Leuelling* 2-11-04  
Date  
LaVerne Leuelling  
Licensed Land Surveyor No. 18089  
Northern Lights Surveying & Mapping, Inc.

OFFICE OF THE COUNTY RECORDER  
County of Cass

I hereby certify that this document was filed in the Recorder's office.

Time: 9:25 A.M. Date: 2-12-2004  
Recorder Kathryn M. Torby  
By HL Deputy  
DOCUMENT NO. 480060

## Statement of Evidence

Page 2 of 3

1873: General Land Office (G.L.O.) survey notes. P. H. Conger, Deputy Surveyor, set a wood post for the corner and referenced it with the following:

14" Red Oak	5" Soft Maple	18" Red Oak	20" Red Oak
N30 1/2°E	N63°W	S48°W	S82°E
33 lks (21.78')	15 lks (9.90')	33 lks (21.78')	34 lks (22.44')

Said notes are on file with the Secretary of State, St. Paul, Minnesota. Copies of these notes are on file with the Cass County Surveyor's Office, Walker, Minnesota.

1917: Earl G. Harrington, a U.S. surveyor, found a decayed wooden stake and three decayed oak stumps, one of which was marked BT. He set a 2"x36" iron pipe with brass cap from which he made the following BT's:

12" White Oak	14" White Oak	8" Basswood	10" Basswood
N79°E	S55 1/4°E	S69 1/2°W	N37 1/2°W
99 lks (65.34')	86 lks (56.76')	125 lks (82.50')	96 lks (63.36')

Notes of G.L.O. Resurvey of 1917, page 161. Said notes are on file with the Secretary of State, St. Paul, Minnesota. Copies of these notes are on file with the Cass County Surveyor's Office, Walker, Minnesota.

November 1921: Butler Smith, Cass Highway Engineer, found the G.L.O. monument and blazed and scribed the following BT's:

10" Oak	12" Elm
S57°E	S68°30'W
58.8'	80.5'

A Certificate of Location of Government Corner was recorded in the Cass County Recorder's Office on January 25, 1922.

1935: H. McKinley, an engineer for the U.S. Forest Service found a Monument along with 3 BTs from the 1917 resurvey:

18" White Oak	9 1/2" Basswood	9" Basswood
S55°E	S65°W	N40°W
60'	1 chain (66')	60'
(1917)	(1917)	(1917)

He showed the corner at the intersection of Highway 200 and the road going south. His measurements indicate that they were not measured precisely. This information is found on a Form 874-9 which is on file at the Supervisor's Office of the Chippewa National Forest in Cass Lake, Minnesota.

1938: The MN Highway Department found this brass capped monument and the following 2 bearing trees:

10" Oak	12" Elm Stump
S57°E	S68°30'W
58.8'	80.5'
(1917)	(1921)

Notes are found in Book No. 37 of State Project 34-34-32 at the MN Department of Transportation in Baxter, MN.

## Statement of Evidence

Page 3 of 3

1941: After road construction, the M.H.D. perpetuated this monument and established the following bearing trees & references:

- A spike in a 5" basswood NE 111.8 ft.
- A spike in a 8" basswood NW 91.5 ft.
- An X on the West end of a concrete culvert SW 55.6 ft.
- An X on the East end of a concrete culvert SE 57.5 ft.

October 28, 1981 Walter Curo and Paul Johnson find a 12"x1/2" bolt with a square head on top of a brass cap monument which checks the distances to the ends of the concrete culvert. They pushed the monument down and set a 2"x24" iron pipe with brass cap marked "RLS 13395" 1 1/2" below the surface of the blacktop and make new BT's:

8' Steel Sign Post 102' North and 33' West of Section Corner.

12" Norway Pine	7" Red Oak	7" Jack Pine	7" Norway Pine
N10°W	N36°E	S46°E	S38°W
69.35'	101.10'	91.03'	70.64'

Certificate of Location of Government Corner by Walter Curo filed in Cass County as Doc. No. 262633 filed 5/7/82.

August 9, 2003: LaVerne Leuelling and Jeff Major of Northern Lights Surveying & Mapping found all of the 1981 references, including the following bearing trees:

18" Norway Pine	12" Oak	13" Jack Pine	12" Norway Pine
N10°W	N36°E	S46°E	S38°W
69.35'	101.10'	91.03'	70.64'

A concrete nail was placed at the intersection of the four distances to the existing nails in the bearing trees. The concrete nail fell at the location of a strong magnetic signal which was the only such signal for several feet.

## Coordinates by Static GPS:

Cass County North

Northing = 190,557.79'  
Easting = 452,768.21'

State Plane Coordinate System  
Minnesota Central Zone  
NAD 83 (HARN 98)

Y = 1,076,317.86'  
X = 2,585,747.30'

## Geodetic Coordinates:

Latitude = 47° 03' 08.2127"  
Longitude = 94° 24' 22.0439"