

# CERTIFICATE OF LOCATION OF GOVERNMENT CORNER

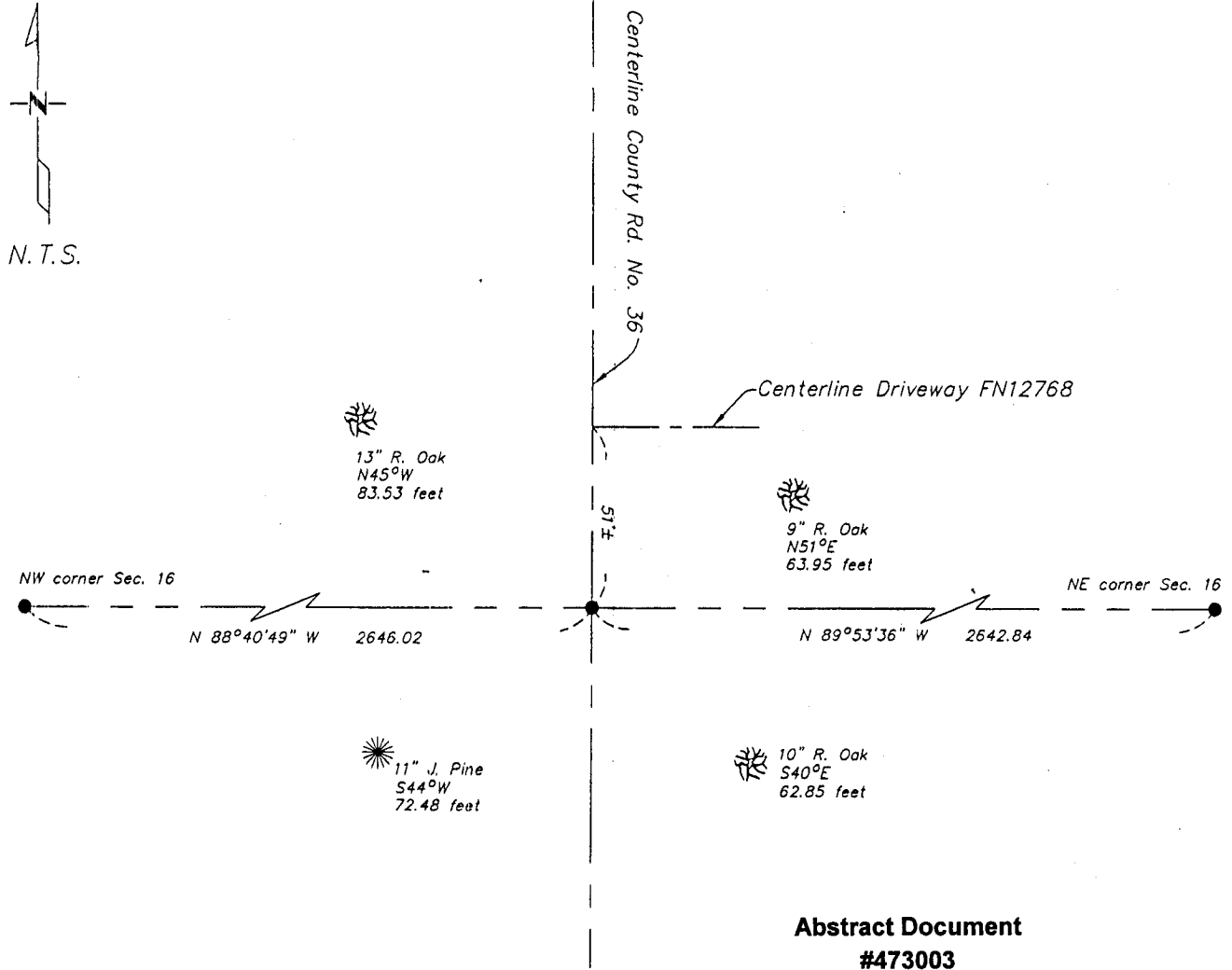
North Quarter \_\_\_\_\_ Corner of Section 16 , Township 133 , Range 29  
5TH Principal Meridian, State of Minnesota, County of Cass

At the corner location shown on the sketch:

On 8/27/03 found a P.K. nail  
DATE

left monument as found     lowered monument     removed monument (explain)  
 On \_\_\_\_\_ placed a \_\_\_\_\_  
DATE

## SKETCH OF REFERENCE TIES



**Abstract Document  
#473003**

Statement of evidence relative to this corner location is on back of page.

I hereby certify that this document and the data contained herein was prepared by me or under my direct supervision.

Bruce Gruva 9/3/03  
SIGNATURE DATE  
Registration No. 17253 BRUCE GRUVA

Land Surveyor     Professional Engineer  
 County Surveyor     County Engineer

OFFICE OF THE COUNTY RECORDER  
County of Cass

I hereby certify that this document was filed in the Co. Recorders office at 10:35 A.M. on the 11th day of Sept. A.D., 2003

County Recorder Kathryn M. Norby  
By de, Deputy

DOCUMENT NO. 473003

Statement of Evidence

*North Quarter, Section 16, T. 133N. R. 29W., 5th P.M.*

*1870 – Wood post was set for corner.*

*1918 – E.B. Horst set 2" X 48" iron monument. (County Book "C" p. 130)*

*1999 – Cass County Surveyor finds 3/4" pin flush and pulls ties as shown on the face of this certificate.*

*2003 – Westwood Professional Services, Inc. finds P.K. nail in place that fits existing ties.*