

CERTIFICATE OF LOCATION OF GOVERNMENT CORNER

I hereby certify that this survey, plan, or report was prepared by me or under my direct supervision and that I am a duly Licensed Land Surveyor under the laws of the State of Minnesota.

[Signature]

Date: 4/28/03 License No: 21367

OFFICE OF THE COUNTY RECORDER
County of CASS

I hereby certify that this document was filed in the Office of the County Recorder at 9:30 o'clock A.M. on the 1st day of May, 2003 A.D.

County Recorder Kathryn M Norby
By: Della Cadwell, Deputy
DOCUMENT NO. 465875

EAST QUARTER & MC #34 Corner of Section 3, Township 139, Range 30, 5TH P.M.

On 4/22/03 found a 3/4" IRON PIPE WITH PLASTIC CAP MARKED RLS 21367 FLUSH WITH GROUND

left monument as found, lowered monument, removed monument (explain)

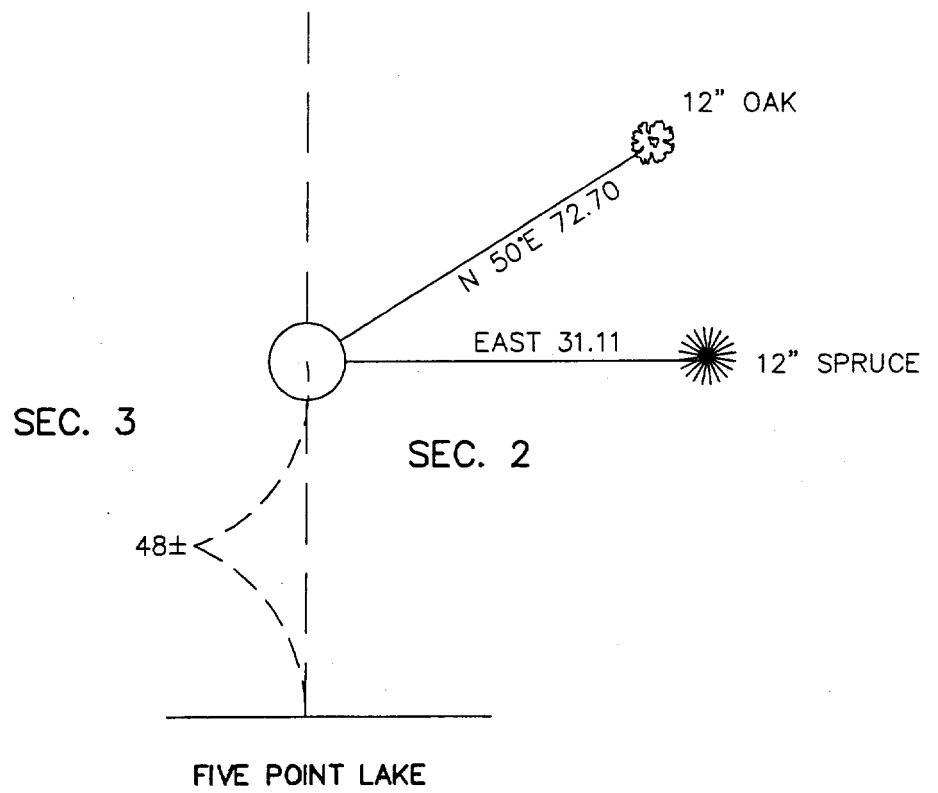
On _____ placed a _____

decl: 5° EAST (ASSUMED)

SKETCH OF REFERENCE TIES

INDEX NO. C-17

Not to Scale



ALL DISTANCES ARE HORIZONTAL TO NAIL IN BASE OF BEARING TREE.

Statement of evidence for this corner position is on the back of this page

Meander Corner #34, East Quarter Corner, Section 3,
Township 139 North, Range 30 West, Cass County,
Minnesota

- 1865 Wright & Walker, U. S. Deputy Surveyors, originally established this corner point while surveying the interior subdivision lines of Township 139 North, Range 30 West. They set a wood post at the corner position with the following witnesses: A 20 inch Norway Pine, North 70 degrees East, 22 links; A 15 inch Norway Pine, North 67 degrees East, 50 links.
- 1992 Landecker & Associates, Inc. plat of LAKE VIEW OF FIVE POINT, Document #343212, shows West Quarter Corner Section 2 and Meander Corner set as perpetuated from 1913 M. A. Kemp survey.
- 2003 April 22, Landecker & Associates, Inc. survey crew found $\frac{3}{4}$ inch iron pipe with plastic cap marked RLS #21367. The in place iron is accepted for the quarter corner/meander corner position.