

CERTIFICATE OF LOCATION OF GOVERNMENT CORNER

I hereby certify that this survey, plan, or report was prepared by me or under my direct supervision and that I am a duly Licensed Land Surveyor under the laws of the State of Minnesota.

[Signature]

Date: 4/11/03 License No: 21367

OFFICE OF THE COUNTY RECORDER
County of CASS

I hereby certify that this document was filed in the Office of the County Recorder at 12:10 o'clock P.M. on the 17th day of April, 2003 A.D.

County Recorder Kathryn M. Morby
By: de, Deputy
DOCUMENT NO. 465198

WC TO MC #29 Corner of Section 31&32, Township 139, Range 29, 5TH P.M.

On 2/18/03 found a 2 1/4" GALV. IRON PIPE WITH CAP UP 11", SOUTH SHOE LAKE HATTIE

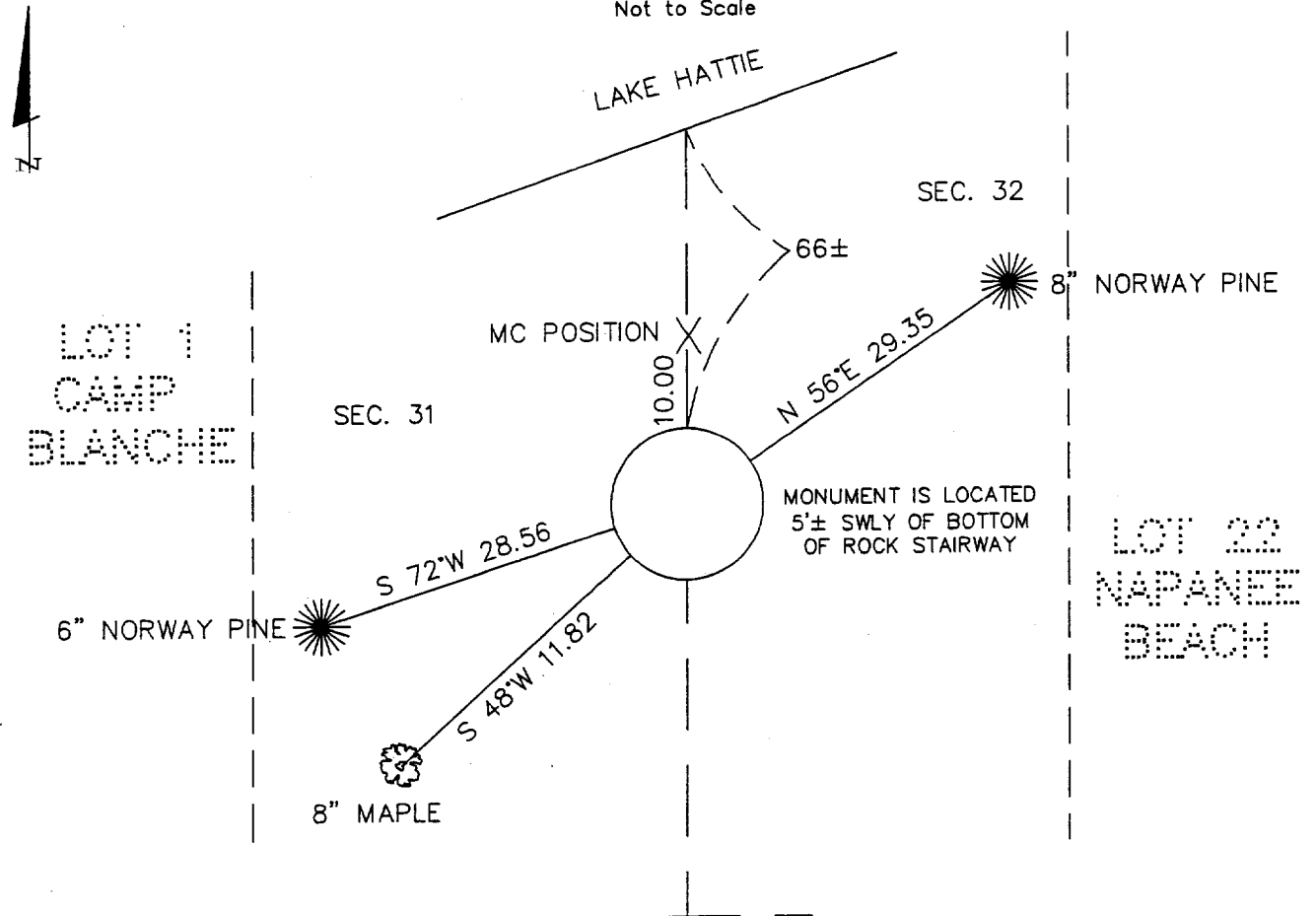
left monument as found, lowered monument, removed monument (explain)

On _____ placed a _____

decl: 5° EAST (ASSUMED)

SKETCH OF REFERENCE TIES

Not to Scale



ALL DISTANCES ARE HORIZONTAL TO NAIL IN BASE OF BEARING TREE.

Statement of evidence for this corner position is on the back of this page

STATEMENT OF EVIDENCE

Index No. V-W 5

MC #29, Section 31, Township 139 North,
Range 29 West, Cass County, Minnesota

- 1865 Wright & Walker, U.S. Deputy Surveyors, originally established this corner position while surveying the interior subdivision lines of Township 139 North, Range 29 West A 9 inch Norway Pine was marked for the corner position with the following witnesses: A 6 inch Norway Pine, South 25 degrees West, 13 links; A 10 inch Norway Pine, South 80 degrees East, 19 links.
- 1915 County Survey Record Book "B", p. 354-360 shows a survey by H. F. Baldwin. He found the original Norway Pine and bearing trees and set a 2 ½ inch x 48 inch iron monument 10 feet South for a WCMC.
- 1916 Plat of Camp Blanche by John W. Curo. Plat shows 2 ¼ inch x 4 foot iron monument WC to MC 10 feet South of true position. Document #43301.
- 1922 Plat of Napanee Beach by John M. Greene. Plat shows 2 ¼ inch x 4 foot iron monument 10 feet South of true MC. Document #78378.
- 2003 February 18, a Landecker & Associates, Inc. survey crew found a 2 ½ inch galvanized iron monument with cap and accepts the corner as the witness corner to Meander Corner #29 from which the following accessories: A 8 inch Norway Pine, North 56 degrees East, 29.35 feet; A 8 inch Maple, South 48 degrees West, 11.82 feet; A 6 inch Norway Pine, South 72 degrees West, 28.56 feet.