

# CERTIFICATE OF LOCATION OF GOVERNMENT CORNER

I hereby certify that this survey, plan, or report was prepared by me or under my direct supervision and that I am a duly Licensed Land Surveyor under the laws of the State of Minnesota.

Alvin J. Lueh

Date: 2/12/03 License No: 17008

OFFICE OF THE COUNTY RECORDER  
County of CASS

I hereby certify that this document was filed in the Office of the County Recorder at 9:25 o'clock A .M. on the 14th day of Feb., 2003 A.D.

County Recorder Kathryn M. Norby  
By: John F. Noede, Deputy  
DOCUMENT NO. 462472

EAST QUARTER Corner of Section 30, Township 136, Range 29, 5th P.M.

On \_\_\_\_\_ found a \_\_\_\_\_

left monument as found,  lowered monument,  removed monument (explain)

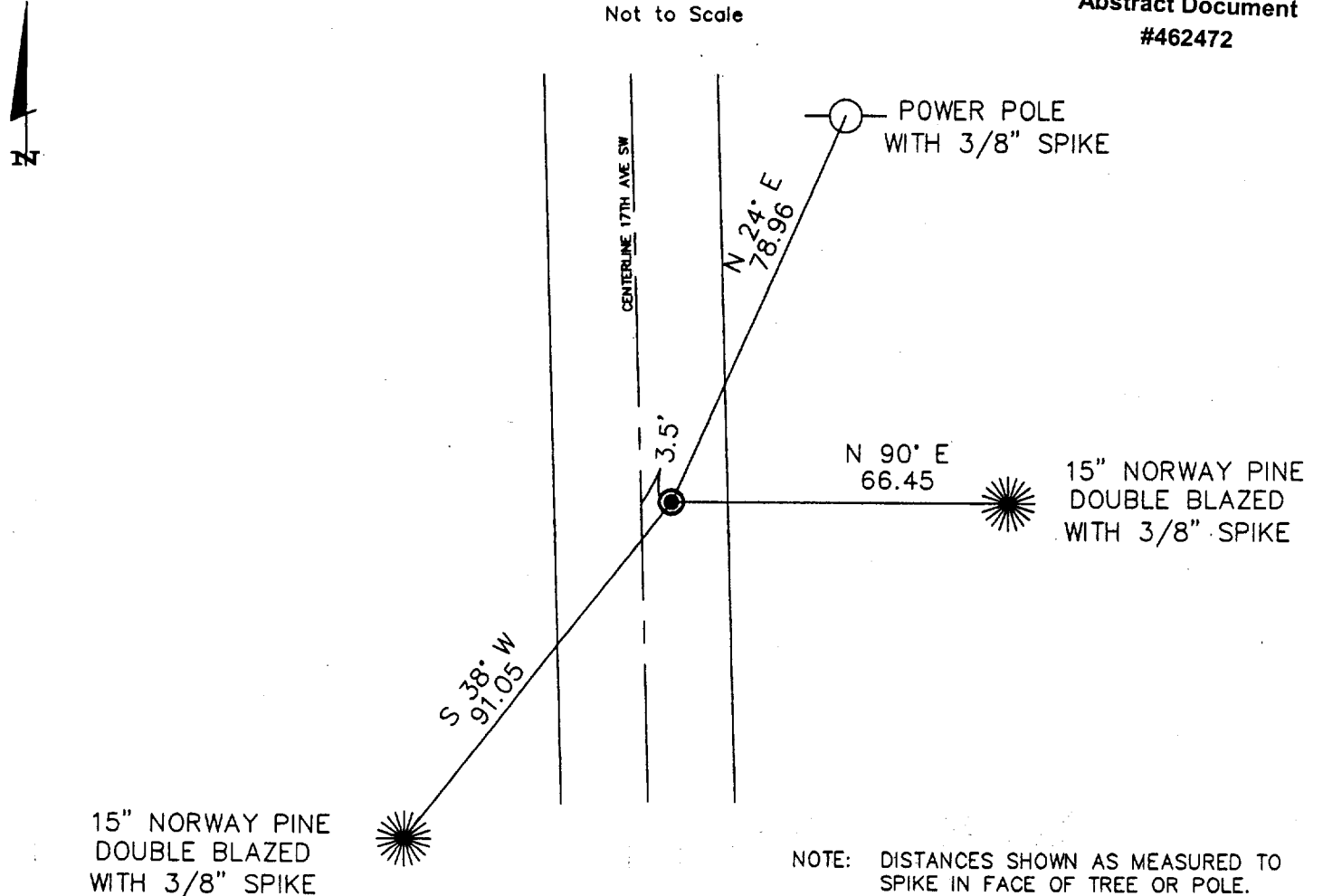
On June 2002 placed a 1/2" IRON PIPE WITH PLASTIC CAP STAMPED "41002" AT SURFACE OF BITUMINOUS ROAD

decl: 5° E (ASSUMED)

## SKETCH OF REFERENCE TIES

Not to Scale

Abstract Document  
#462472



NOTE: DISTANCES SHOWN AS MEASURED TO SPIKE IN FACE OF TREE OR POLE.

East Quarter corner, Section 30, Township 136 North,  
Range 29 West, Cass County, Minnesota.

1870 Walker, Allen and Putnam originally established this corner position while subdividing Township 136 North, Range 29 West. A wood post was set to mark the corner with the following witnesses: A 18" N. Pine, South 44 degrees East, 10 links; a 20" N. Pine, North 61 degrees West, 16 links.

1909 County Survey Record Book A, p. 571-575, John W. Curo could not find evidence of government corner. Set stake proportionately with the following witnesses: A pine stump, Northeast, 22.65 feet; a Pine stump, Northwest, 23.30 feet.

2002 A Landecker & Associates, Inc. survey crew searched for and could not find evidence of original corner position. The corner was determined lost and was reset by single proportion between Northwest and Southwest corners of section 29. A 1/2" pipe with plastic cap stamped "41002" was set at corner.

2003 A Landecker & Associates, Inc. survey crew found the 1/2" pipe with plastic cap stamped "41002" and accepted the corner as a perpetuation of the original corner. The corner lies 3.5 feet East of the centerline of 17th Ave. SW. Three witnesses were established as shown.

NOTE Landecker and Associates, Inc. and other surveyors have used the existing corners of Section 29 with confidence for over 20 years while performing a variety of surveys.

The North and West lines of today's monumented Section 29 conform with the plat shown in County Survey Record Book A, p.571-576, dated 1909. The North line of Section 29 as monumented today has a distance of 5359.05 feet, compared to the 1909 survey showing a distance of 5363.5 feet ±. The West line of Section 29 as monumented today has a distance of 5333.76 feet, compared to the 1909 survey showing a distance of 5336.5 feet.