

CERTIFICATE OF LOCATION OF GOVERNMENT CORNER

I hereby certify that this survey, plan, or report was prepared by me or under my direct supervision and that I am a duly Licensed Land Surveyor under the laws of the State of Minnesota.

Terry L. Freeman

TERRY L. FREEMAN

Date: 11/1/01 License No: 21767

OFFICE OF THE COUNTY RECORDER
County of CASS

I hereby certify that this document was filed in the Office of the County Recorder at 2:35 o'clock P.M. on the 1st day of Nov., 2001 A.D.

County Recorder Kathryn M. Norby

By: John F. Maeder, Deputy
DOCUMENT NO. 442509

MC NO.17 Corner of Section 23/24, Township 141, Range 31, 5TH P.M.

On 7/5/01 found a 2" IRON PIPE UP 11"

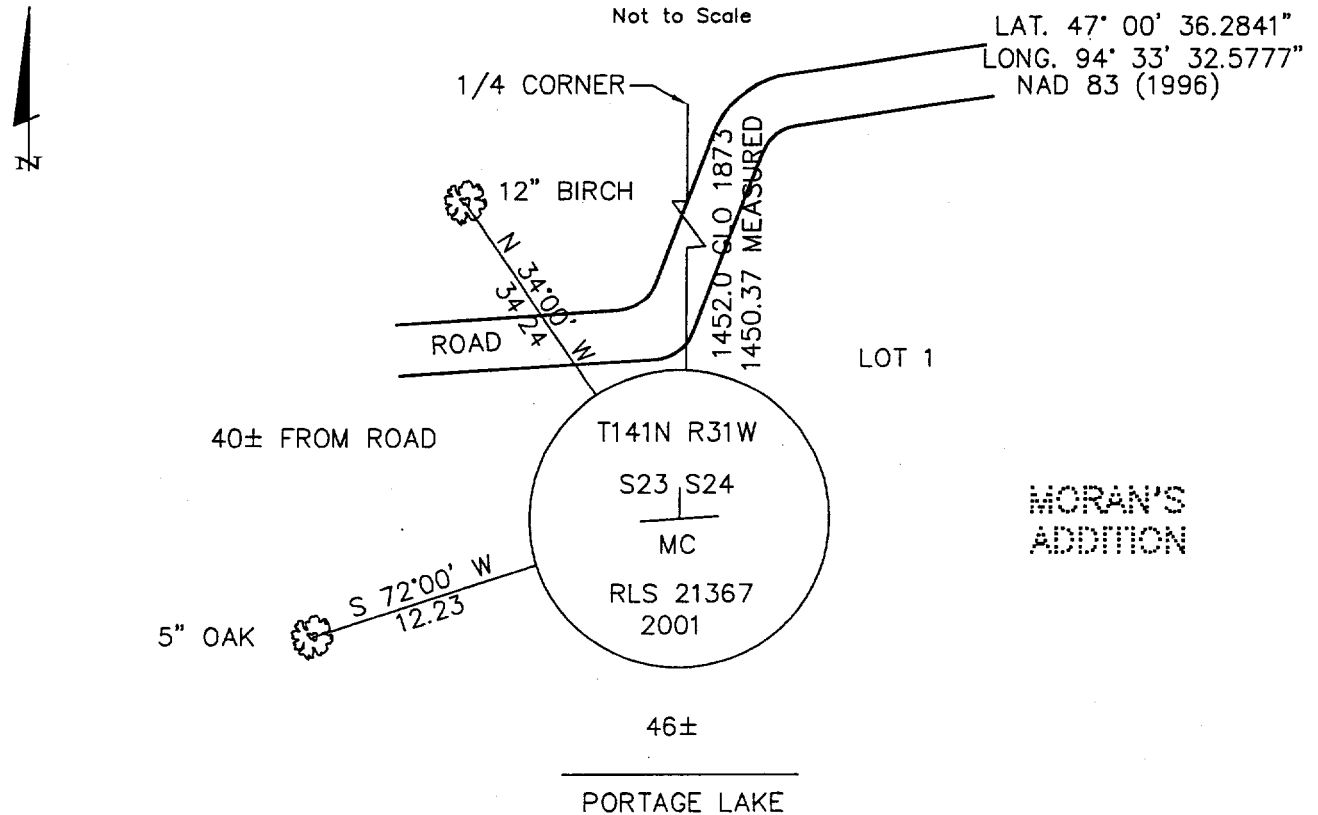
left monument as found, lowered monument, removed monument (explain)

On 9/13/01 placed a 3" ALUM. CAP ON EXISTING PIPE MARKED AS SHOWN

decl: 5° E

SKETCH OF REFERENCE TIES

Not to Scale



THE BEARING TREES ARE SCRIBED, PAINTED WITH RED ENAMEL AND MARKED WITH BT TAGS.

ALL DISTANCES ARE HORIZONTAL TO NAIL IN BASE OF BEARING TREE.

Statement of evidence for this corner position is on the back of this page

STATEMENT OF EVIDENCE

Index No. Q - R - 21

Meander corner #17, Section 23, Township 141 North,
Range 31 West, Cass County, Minnesota
North Shore of Portage Lake

1873 P. H. Conger, U.S. Deputy Surveyor, originally established this corner position while subdividing Township 141 North, Range 31 West. A wood post was set to mark the corner position with the following witnesses: A 4" Jack Pine, N 60 degrees E, 15 lks; a 6" Jack Pine, S 78 degrees W, 38 lks. Notes on file in the Secretary of State's office with a copy in the Cass County Surveyor's office.

1959 W. J. Spain, Jr., RLS No. 2003 set an iron monument for the MC while surveying in Government Lot 1 of Section 24.

1962 Harold Curo, RLS No. 3417, shows an iron monument in place at the MC in survey of tracts in Section 24. Notes found in R. F. Schneider's records.

1965 December, Robert F. Schneider, RLS No. 5740, found a 2' iron pipe and accepts as Meander Corner for survey of west line Section 24. Notes currently on file in the Walker office of Landecker & Associates, Inc.

1971 October, Robert F. Schneider, RLS No. 5740, found a 2" iron pipe per 1965 recovery and accepts for survey of MORAN'S ADDITION. Recorded as Document Number 203074.

2001 A Landecker & Associates, Inc. survey crew found a 2" iron pipe up 11" and accepts the corner as perpetuation of the original corner position from which the following witnesses: A 12" Birch, N 34 degrees W, 34.24 feet; a 5" Oak, S 72 degrees W, 12.23 feet; a stamped aluminum cap was attached.