

# CERTIFICATE OF LOCATION OF GOVERNMENT CORNER

NORTH QUARTER Corner of Section 34, Township 135 N, Range 31 W, 5TH P.M.

STATE OF MINNESOTA, County of CASS

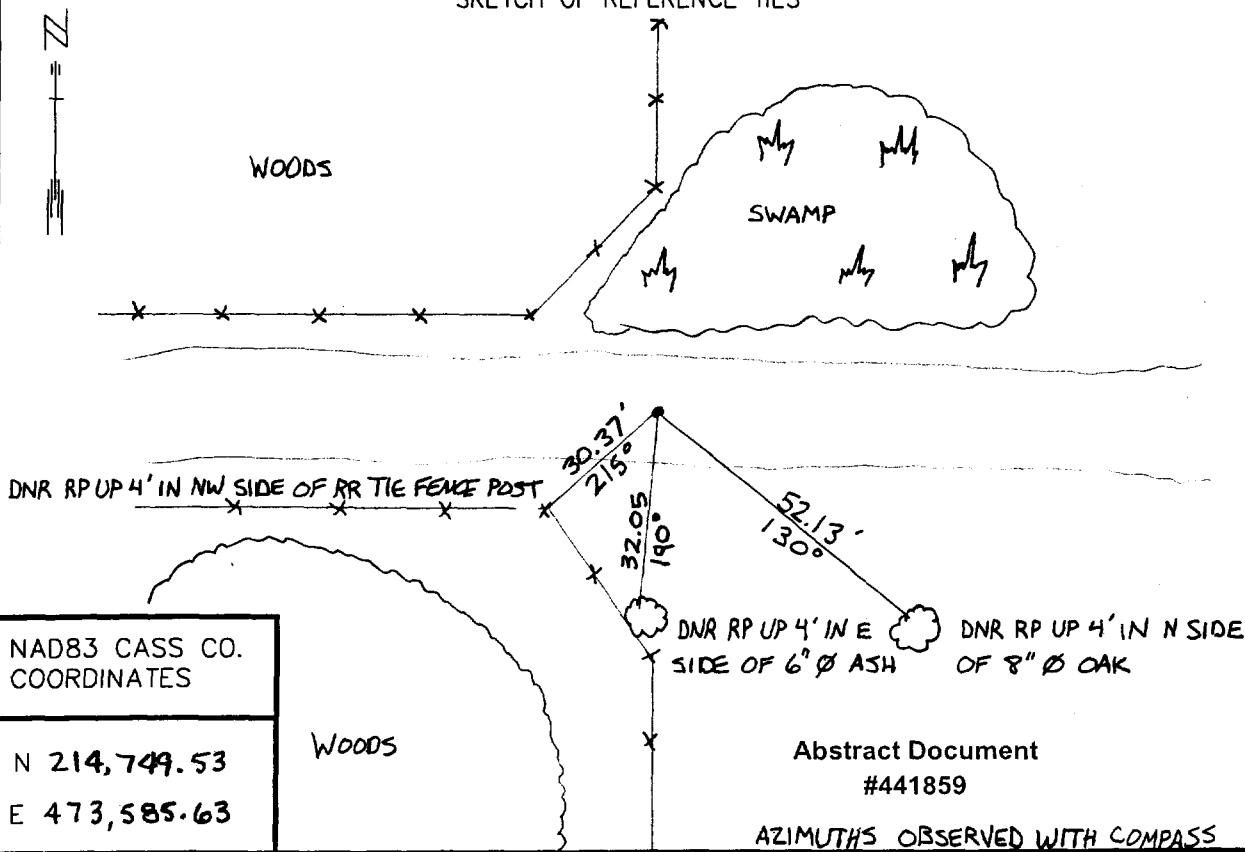
At the corner location shown on the sketch:

On \_\_\_\_\_ found a \_\_\_\_\_  
DATE

left monument as found,  lowered monument,  removed monument (explain)

On 6-11-98 Placed a DSM DN ON E E-W TRAIL ROAD AND ON EXTENSION  
DATE WITH FENCE N-S.

SKETCH OF REFERENCE TIES



NAD83 CASS CO. COORDINATES

N 214,749.53

E 473,585.63

Abstract Document #441859

AZIMUTHS OBSERVED WITH COMPASS

Statement of evidence relative to this corner location is on back of page.

DATE  
FILE WMA01198

I hereby certify that this document and the data contained herein was prepared by me or under

my direct supervision.  
John D. Walker 5/31/01  
SIGNATURE DATE

License Number 16098

Land Surveyor,  Professional Engineer  
 County Surveyor,  County Engineer

OFFICE OF THE COUNTY RECORDER  
County of Cass

I hereby certify that this document was filed in the Co. recorders office at 2:58 P.M. on the 16th day of Oct. A.D., 2001

County Recorder Kathryn M. Norby  
By John F. Maeder, Deputy  
DOCUMENT NO. 441859

**North Quarter Corner Section 34, Township 135 North, Range 31 West**

The Department of Natural Resources, Bureau of Engineering contacted the following offices for information regarding this corner:

MN Secretary of State  
Cass County Surveyor  
Widseth, Smith and Nolting of Brainerd  
Landecker and Associates of Pequot Lakes  
Landecker and Associates of Walker  
Central Minnesota Surveying

- 1870 The US General Land Office field notes, on file in the Secretary of State's Office, show this corner to be marked with a post and the following bearing trees were marked:  
W. Birch 7" N 45° E 12 links  
Tamarack 10" S 47 ½° E 23 links
- 1998 The DNR survey crew searched for the corner at the intersection of fences north and south and the centerline of the road east-west. Nothing was found and a spike was set at the intersection. The section corners on each side of this corner were located and the spike falls 9.9' west and 8.1' north of the lost position. The spike was removed and a 3/4" x 24" iron rod with a MNDNR SURVEY MARKER cap was set in it's place at the obliterated position of the corner, down 3".

For more information on our survey in this area please contact MN DNR, Bureau of Engineering, Survey Section, 1601 Minnesota Drive, Brainerd, MN 56425