

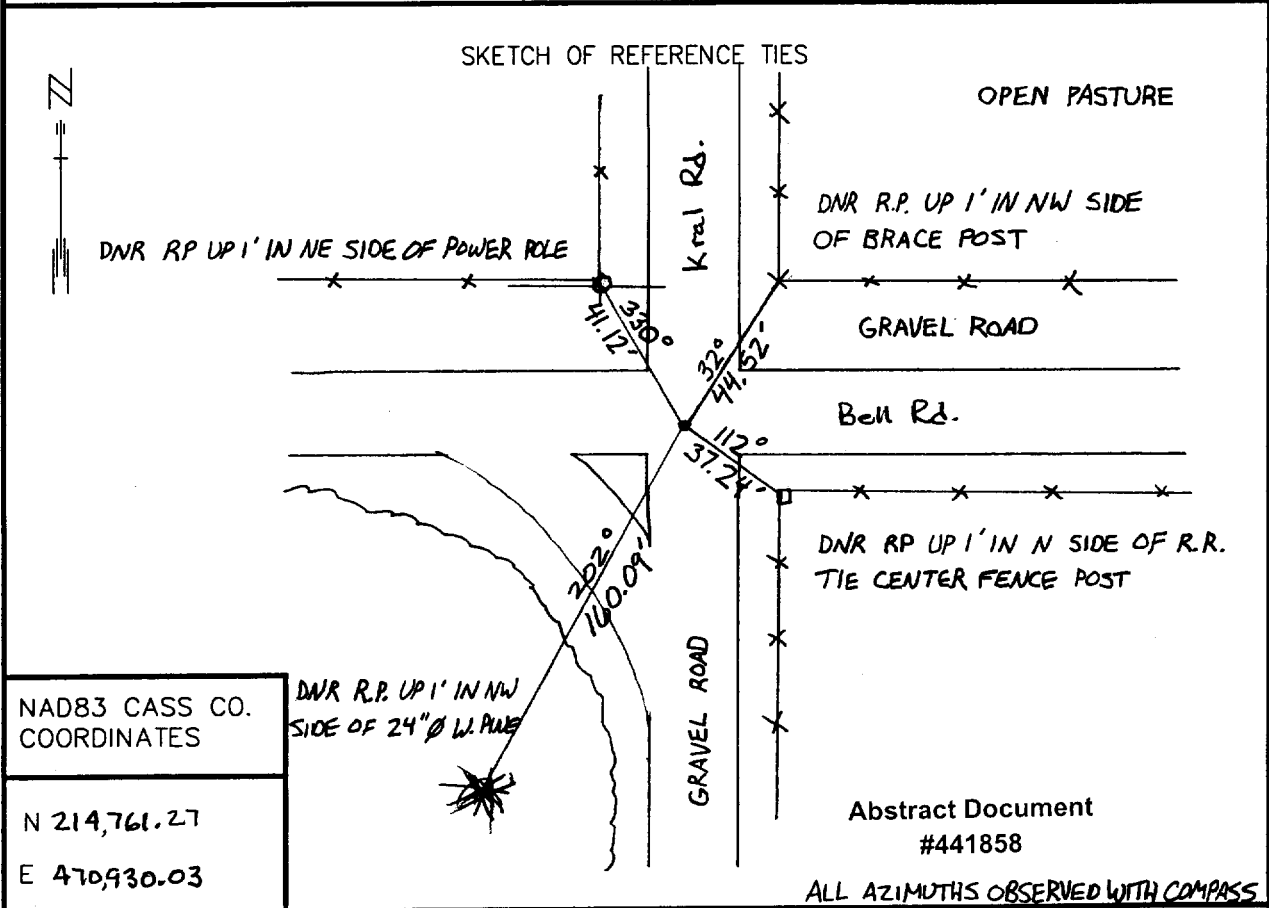
CERTIFICATE OF LOCATION OF GOVERNMENT CORNER

NORTH EAST Corner of Section 33, Township 135 N, Range 31 W, 5TH P.M.

STATE OF MINNESOTA, County of CASS

At the corner location shown on the sketch:

- On 4-9-98 found a BRIDGE SPIKE FLUSH, 1.5' WEST OF E-N-S GRAVEL ROAD AND 3' SOUTH OF E-E-W GRAVEL ROADS
 - left monument as found,
 - lowered monument,
 - removed monument (explain)
- On _____ Placed a _____
DATE



Statement of evidence relative to this corner location is on back of page. DATE _____ FILE WMA01198

I hereby certify that this document and the data contained herein was prepared by me or under my direct supervision.

5/3/01
 SIGNATURE DATE

License Number 16098

Land Surveyor, Professional Engineer
 County Surveyor, County Engineer

OFFICE OF THE COUNTY RECORDER
 County of Cass

I hereby certify that this document was filed in the Co. recorders office at 2:56 P. M. on the 16th day of Oct. A.D., 2001

County Recorder Kathryn M. Norley
 By John F. Maeder, Deputy
 DOCUMENT NO. 441858

Northeast Corner Section 33, Township 135 North, Range 31 West

The Department of Natural Resources, Bureau of Engineering contacted the following offices for information regarding this corner:

MN Secretary of State
Cass County Surveyor
Widseth, Smith and Nolting of Brainerd
Landecker and Associates of Pequot Lakes
Landecker and Associates of Walker
Central Minnesota Surveying

1870 The US General Land Office field notes, on file in the Secretary of State's Office, show this corner to be marked with a post and the following bearing trees were marked:

W. Birch 8" S 33 ½ ° E 22 links (14.52')
W. Birch 7" S 23° W 31 links (20.46')
Tamarack 12" N 70 ° E 30 links (19.80')
Y. Pine 7" N 47° W 12 links (7.92')

1998 The DNR survey crew found a bridge spike, flush 1.5' west of the centerline of a north-south gravel road and 3' south of the centerline of an east - west gravel road. The following corners were located to the north, east and south.

East Quarter Corner Section 28 - N 00°02'42"E 2660.62'
North Quarter Corner Section 34 - S89°44'48"E 2655.62'
Southeast Corner Section 33 - S 00°42'50"W 5305.06'

For more information on our survey in this area please contact MN DNR, Bureau of Engineering, Survey Section, 1601 Minnesota Drive, Brainerd, MN 56425