

CERTIFICATE OF LOCATION OF GOVERNMENT CORNER

NORTHEAST Corner of Section 30, Township 135 N, Range 31 W, 5TH P.M.

STATE OF MINNESOTA, County of CASS

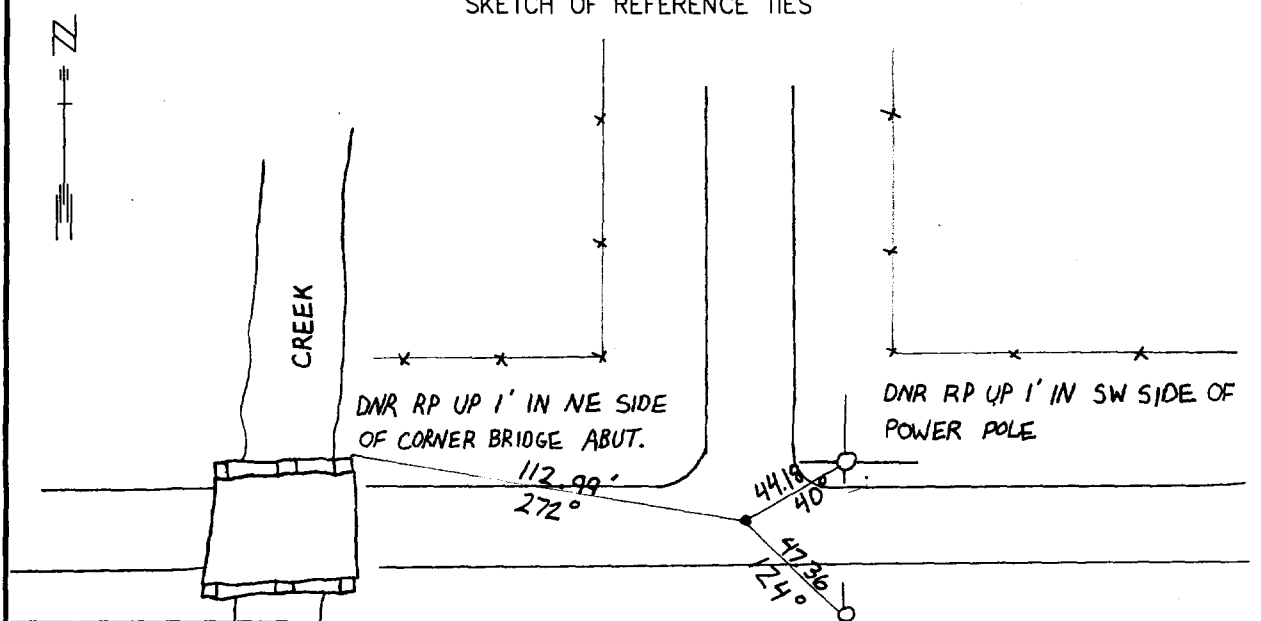
At the corner location shown on the sketch:

On 4-9-98 found a BRIDGE SPIKE DOWN 0.1' ON E GRAVEL ROADS
DATE E-W-N.

left monument as found, lowered monument, removed monument (explain)

On 4-9-98 Placed a 3/4"x24" IRON ROD WITH "MNDNR SURVEY MARKER" CAP
DATE

SKETCH OF REFERENCE TIES



NAD83 CASS CO. COORDINATES

N 220,028.71
E 460,274.26

DNR RP UP 2' IN NW SIDE OF BRACE POST

Abstract Document #441850

AZIMUTHS OBSERVED WITH COMPASS

Statement of evidence relative to this corner location is on back of page.

DATE FILE WMA01198

I hereby certify that this document and the data contained herein was prepared by me or under my direct supervision.

John D. Walker SIGNATURE 5/31/01 DATE

License Number 16098

Land Surveyor, Professional Engineer
 County Surveyor, County Engineer

OFFICE OF THE COUNTY RECORDER
County of Cass

I hereby certify that this document was filed in the Co. recorders office at 2:40 P.M. on the 16th day of Oct. A.D., 2001

County Recorder Kathryn M. Norby
By John E. Mueller, Deputy
DOCUMENT NO. 441850

Northeast Corner Section 30, Township 135 North, Range 31 West

The Department of Natural Resources, Bureau of Engineering contacted the following offices for information regarding this corner:

MN Secretary of State
Cass County Surveyor
Widseth, Smith and Nolting of Brainerd
Landecker and Associates of Pequot Lakes
Landecker and Associates of Walker
Central Minnesota Surveying

- 1870 The US General Land Office field notes, on file in the Secretary of State's Office, show this corner to be marked with a post
- 1998 The DNR survey crew found bridge spike, down 2" in the centerline of roads north, east and west. A MNDNR Survey Marker was set in place of the spike, down 2". The monument was located by GPS.

For more information on our survey in this area please contact MN DNR, Bureau of Engineering, Survey Section, 1601 Minnesota Drive, Brainerd, MN 56425