

CERTIFICATE OF LOCATION OF GOVERNMENT CORNER

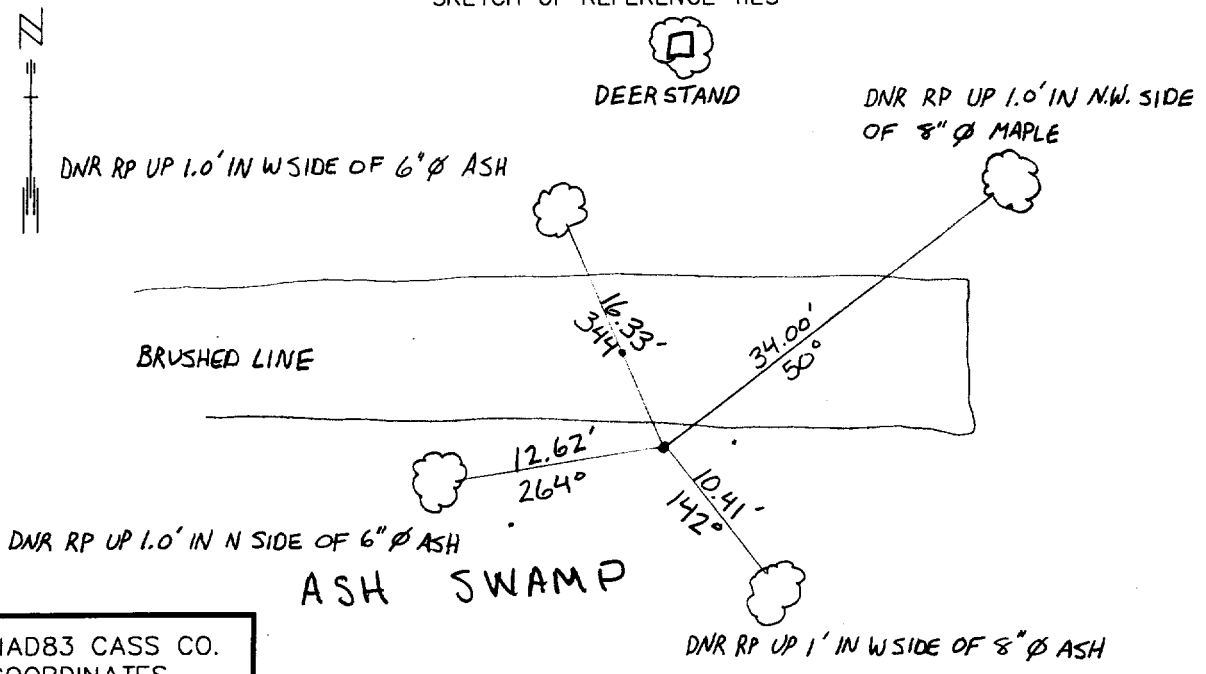
EAST QUARTER Corner of Section 24, Township 135 N, Range 31 W, 5TH P.M.

STATE OF MINNESOTA, County of CASS

At the corner location shown on the sketch:

- On _____ found a _____
DATE _____
- left monument as found, lowered monument, removed monument (explain)
- On 3-18-98 Placed a DEPT SURVEY MONUMENT UP 0.4' ON S EDGE OF BRUSHED
DATE LINE TO W, ±150' S OF DEER STAND.

SKETCH OF REFERENCE TIES



NAD83 CASS CO. COORDINATES

N 222619.91
E 486771.23

Abstract Document #441849

AZIMUTHS OBSERVED WITH COMPASS

Statement of evidence relative to this corner location is on back of page.

DATE FILE WMA01198

I hereby certify that this document and the data contained herein was prepared by me or under my direct supervision.

John F. Madden SIGNATURE 5/31/01 DATE

License Number 16098
 Land Surveyor, Professional Engineer
 County Surveyor, County Engineer

OFFICE OF THE COUNTY RECORDER
County of Cass

I hereby certify that this document was filed in the Co. recorders office at 2:38 P .M. on the 16th day of Oct. A.D., 1900
County Recorder Kathryn M. Nolley
By John F. Madden, Deputy
DOCUMENT NO. 441849

East Quarter Corner Section 24, Township 135 North, Range 31 West

The Department of Natural Resources, Bureau of Engineering contacted the following offices for information regarding this corner:

MN Secretary of State
Cass County Surveyor
Widseth, Smith and Nolting of Brainerd
Landecker and Associates of Pequot Lakes
Landecker and Associates of Walker
Central Minnesota Surveying

1858 The US General Land Office field notes, on file in the Secretary of State's Office, show this corner to be marked with a post and the following bearing trees were marked:

Spruce 14" N 40° E 12 links (7.92')
Balsam 5" N 63° W 18 links (11.88')

1998 The DNR survey crew searched for the corner at the lost position between the southeast corner of section 36 and the northeast corner of section 24. Nothing was found and a 3/4" x 24" iron rod with a MNDNR SURVEY MARKER cap was set, up 5" on the south edge of a brushed line to the west. The distance to the section corners north and south is 2644.13' with a bearing on the section line of N 00°21'29" W.

For more information on our survey in this area please contact MN DNR, Bureau of Engineering, Survey Section, 1601 Minnesota Drive, Brainerd, MN 56425