

CERTIFICATE OF LOCATION OF GOVERNMENT CORNER

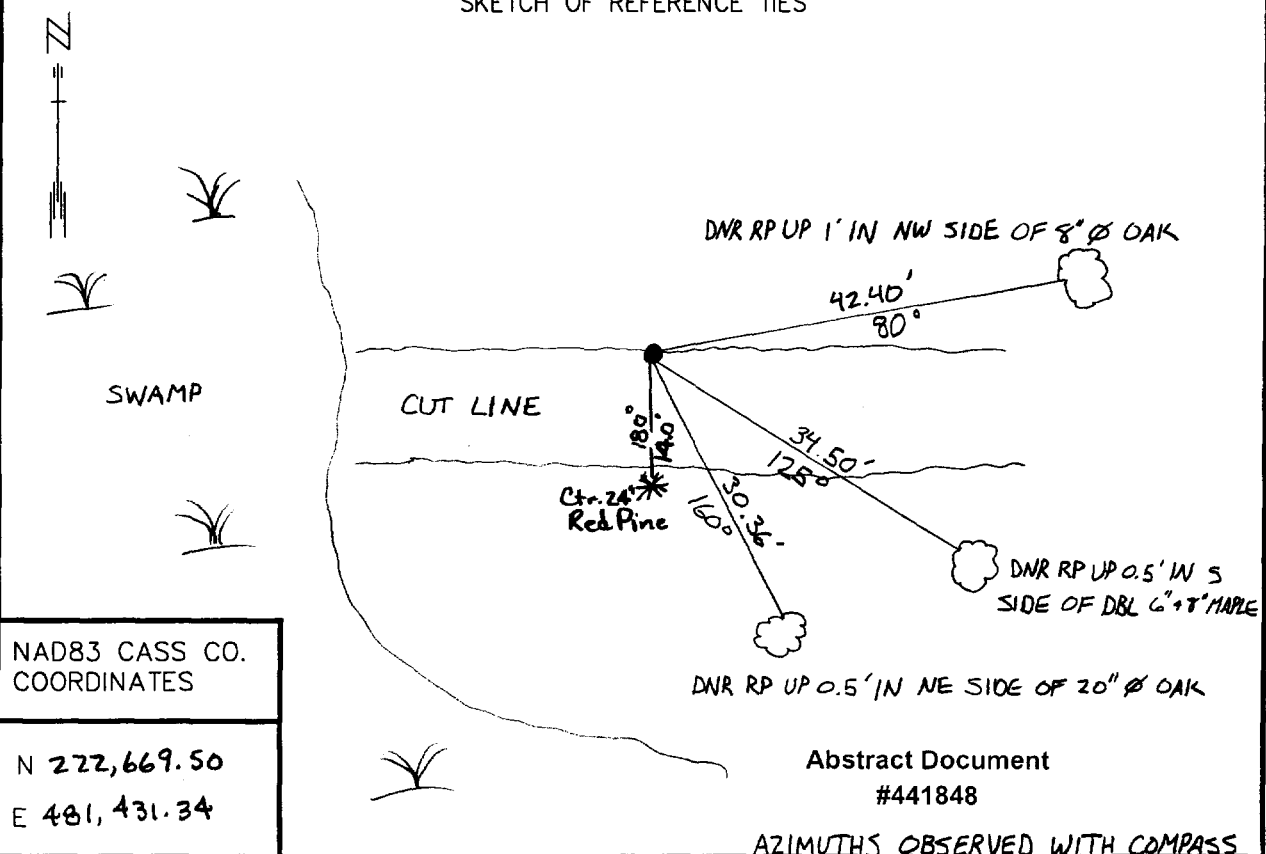
EAST QUARTER Corner of Section 23, Township 135 N, Range 31 W, 5TH P.M.

STATE OF MINNESOTA, County of CASS

At the corner location shown on the sketch:

- On _____ found a _____
DATE
- left monument as found, lowered monument, removed monument (explain)
- On 6-17-98 Placed a DSM ON N EDGE OF E-W BRUSHED LINE ±70' N
DATE OF EDGE OF SWAMP AND ±65' E OF EDGE OF SWAMP

SKETCH OF REFERENCE TIES



NAD83 CASS CO.
COORDINATES

N 222,669.50
E 481,431.34

Abstract Document #441848

AZIMUTHS OBSERVED WITH COMPASS

Statement of evidence relative to this corner location is on back of page.

DATE
FILE WMA01198

I hereby certify that this document and the data contained herein was prepared by me or under my direct supervision.

John D. Weller 5/31/01
SIGNATURE DATE

License Number 16098

Land Surveyor, Professional Engineer
 County Surveyor, County Engineer

OFFICE OF THE COUNTY RECORDER
County of Cass

I hereby certify that this document was filed in the Co. recorders office at 2:36 P.M. on the 16th day of Oct. A.D., 2001

County Recorder Kathryn M. Norley
By John F. Maeder, Deputy
DOCUMENT NO. 441848

East Quarter Corner Section 23, Township 135 North, Range 31 West

The Department of Natural Resources, Bureau of Engineering contacted the following offices for information regarding this corner:

MN Secretary of State
Cass County Surveyor
Widseth, Smith and Nolting of Brainerd
Landecker and Associates of Pequot Lakes
Landecker and Associates of Walker
Central Minnesota Surveying

1870 The US General Land Office field notes, on file in the Secretary of State's Office, show this corner to be marked with a post, 1 chain north of a swamp and the following bearing trees were marked:

W. Pine 20" S 45° W 49 links (32.34')
N. Pine 30" S 88 ½° E 56 links (36.96')

1998 The DNR survey crew searched for the corner at the lost location between section corners. Several large pine stumps were found, but no two could be put together to fit the GLO trees. The lost position falls about 1 chain north of a swamp. A 3/4" x 24" iron rod with a MNDNR SURVEY MARKER cap was set at the lost position of the corner, up 1". The distance to the section corners is 2644.99'.

For more information on our survey in this area please contact MN DNR, Bureau of Engineering, Survey Section, 1601 Minnesota Drive, Brainerd, MN 56425