

CERTIFICATE OF LOCATION OF GOVERNMENT CORNER

NORTHEAST Corner of Section 13, Township 135 N, Range 31 W, 5TH P.M.

STATE OF MINNESOTA, County of CASS

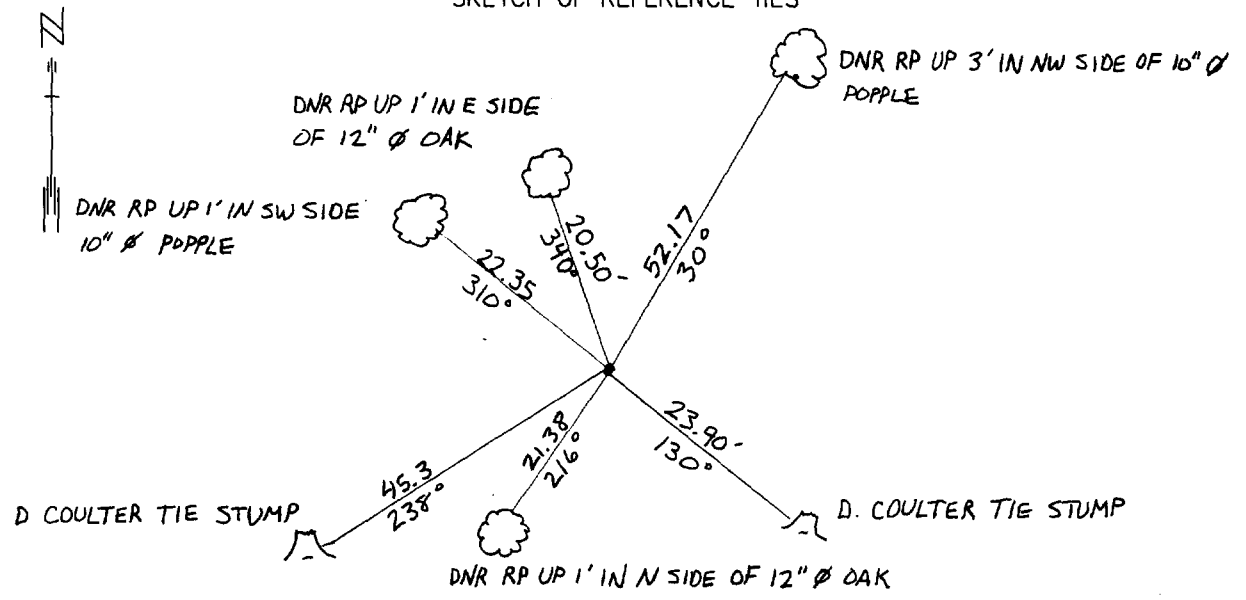
At the corner location shown on the sketch:

On 7-8-98 found a 1 1/2" IRON PIPE TOP MUSHROOMED UP 1' IN WOODS.
DATE

left monument as found, lowered monument, removed monument (explain)

On _____ Placed on _____
DATE

SKETCH OF REFERENCE TIES



NAD83 CASS CO.
COORDINATES

N 230,590.25
E 486,806.23

Abstract Document
#441839

AZIMUTH OBSERVED WITH COMPASS

Statement of evidence relative to this corner location is on back of page.

DATE
FILE WMA01198

I hereby certify that this document and the data contained herein was prepared by me or under my direct supervision.

John D. Walker 5/3/01
SIGNATURE DATE

License Number 16098

Land Surveyor, Professional Engineer
 County Surveyor, County Engineer

OFFICE OF THE COUNTY RECORDER
County of Cass

I hereby certify that this document was filed in the Co. recorders office at 2:18 P.M. on the 16th day of Oct. A.D., 2001

County Recorder Kathryn M. Norley
By John E. Maeder, Deputy
DOCUMENT NO. 441839

Northeast Corner Section 13, Township 135 North, Range 31 West

The Department of Natural Resources, Bureau of Engineering contacted the following offices for information regarding this corner:

MN Secretary of State
Cass County Surveyor
Widseth, Smith and Nolting of Brainerd
Landecker and Associates of Pequot Lakes
Landecker and Associates of Walker
Central Minnesota Surveying

- 1858 The US General Land Office field notes, on file in the Secretary of State's Office, show this corner to be marked with a post and the following bearing trees were marked:
Blk. Oak 9" S 19° W 36 links
Birch 7" N 85° E 11 links
Birch 6" S 82½° E 14 links
Aspen 10" N 52° W 58 links
- 1923 On roll 115, book 94, page 151, a county surveyor measured 10700' between the northeast corner of sections 12 and 24.
- 1971 Donald Coulter worked on sections 10 - 15 for a plat of Wilderness Park. He set a 1 ½" iron pipe to mark the corner. He took ties to two oak and four aspen. He measured 5330.36' to the northeast corner of section 12 and 5329.2' to the northeast corner of section 24.
- 1998 The DNR survey crew found the 1½" iron pipe with a mushroomed top, up 12", and the six tie trees taken by Coulter. The northeast corner of section 12 is N00°35'44"E - 5329.62' and the northeast corner of section 24 is S 00°33'16"W - 5326.52'.

For more information on our survey in this area please contact MN DNR, Bureau of Engineering, Survey Section, 1601 Minnesota Drive, Brainerd, MN 56425