

CERTIFICATE OF LOCATION OF GOVERNMENT CORNER

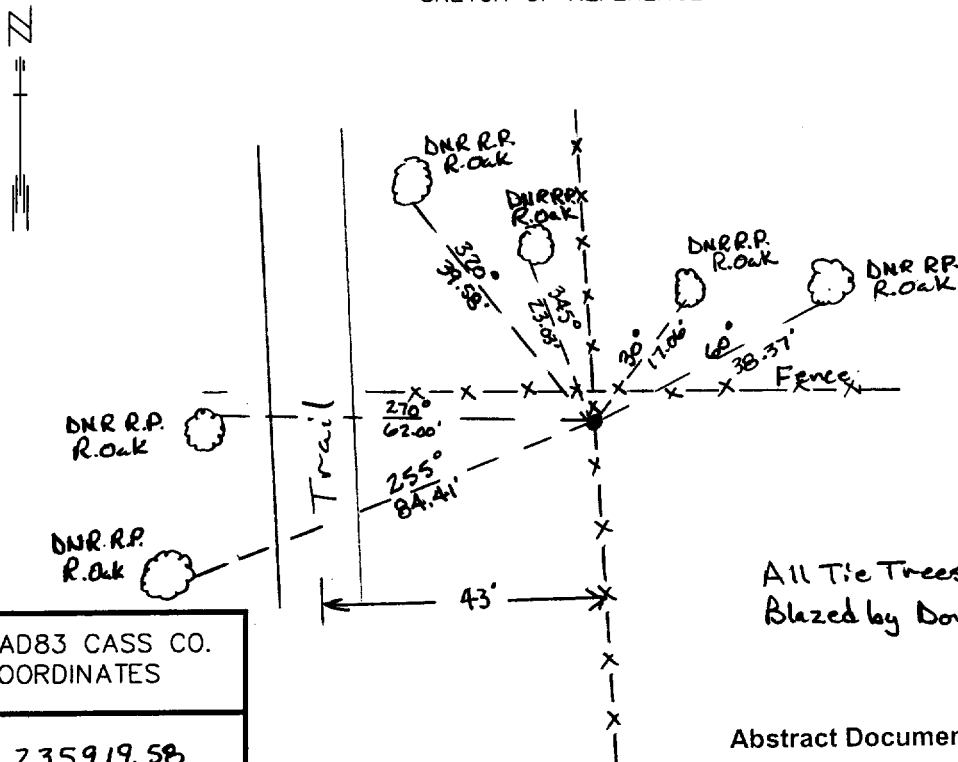
Northeast Corner of Section 12, Township 135 N, Range 31 W, 5TH P.M.

STATE OF MINNESOTA, County of CASS

At the corner location shown on the sketch:

- On 2/98 found a 1 1/4" Iron Pipe, up 2' with cap showing section number and RLS 5852. Pipe is on N-S fence and 2' south of E-W. Fence
DATE
- left monument as found, lowered monument, removed monument (explain)
- On _____ Placed a _____
DATE

SKETCH OF REFERENCE TIES



NAD83 CASS CO. COORDINATES

N 235,919.58

E 486,861.62

Abstract Document #441838

Azimuths observed with Compass.

Statement of evidence relative to this corner location is on back of page.

DATE 10/18/99
FILE WMA01198

I hereby certify that this document and the data contained herein was prepared by me or under my direct supervision.

John D. Walker 5/3/01
SIGNATURE DATE

License Number 16098

- Land Surveyor, Professional Engineer
 County Surveyor, County Engineer

OFFICE OF THE COUNTY RECORDER

County of Cass

I hereby certify that this document was filed in the Co. recorders office at 2:16 P. .M. on the 16th day of Oct. A.D., 2001

County Recorder Kathryn M. Norbury
 By John F. Maeder, Deputy

DOCUMENT NO. 441838

Northeast Corner Section 12, Township 135 North, Range 31 West

The Department of Natural Resources, Bureau of Engineering contacted the following offices for information regarding this corner:

MN Secretary of State
Cass County Surveyor
Widseth, Smith and Nolting of Brainerd
Landecker and Associates of Pequot Lakes
Landecker and Associates of Walker
Central Minnesota Surveying

- 1858 The US General Land Office field notes, on file in the Secretary of State's Office, show this corner to be marked with a post and the following bearing trees were marked:
Blk. Oak 9" S 59° W 24 links
Blk. Oak 9" N 71° E 22 links
Blk. Oak 6" S 63° E 30 links
W. Birch 6" N 72° W 40 links
- 1923 On roll 115, book 94, page 151, a county surveyor found this corner and measured 10700' to an IM to mark the corner to sections,13,24 and 18,19
- 1971 Donald Coulter worked on sections 10 - 15 for a plat of Wilderness Park. He set a 1 ½" iron pipe to mark the corner. He took ties to six oak trees. He measured 5330.36' to the northeast corner of section 13.
- 1998 The DNR survey crew found the capped iron pipe and the six tie trees taken by Coulter. The monument is on a north - south fence line and 2' south of an east - west fence. The northeast corner of section 13 is S 00°35'44"W 5329.62' and the northeast corner of section 1 is N 01°22'24"W - 5286.45'.

For more information on our survey in this area please contact MN DNR, Bureau of Engineering, Survey Section, 1601 Minnesota Drive, Brainerd, MN 56425