

CERTIFICATE OF LOCATION OF GOVERNMENT CORNER

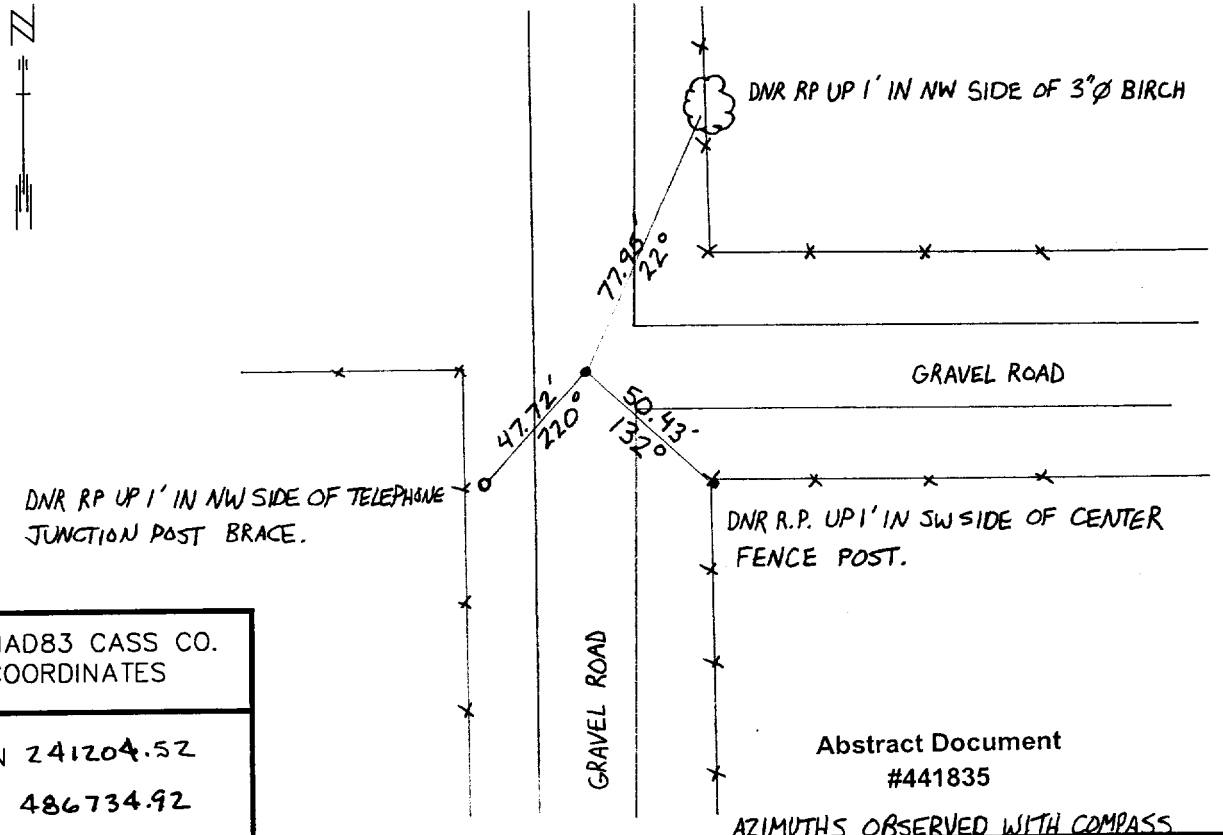
NORTHEAST Corner of Section 1, Township 135 N, Range 31 W, 5TH P.M.

STATE OF MINNESOTA, County of CASS

At the corner location shown on the sketch:

- On 4-9-98 found a 1/2" Ø IRON PIPE DOWN 0.5' 2' EAST & N-S GRAVEL ROAD
DATE AND ON E GRAVEL ROAD EAST. SET DSM IN PIPE DOWN 0.2'.
 - left monument as found,
 - lowered monument,
 - removed monument (explain)
- On _____ Placed a _____
DATE

SKETCH OF REFERENCE TIES



NAD83 CASS CO.
COORDINATES

N 241204.52
E 486734.92

Abstract Document #441835

AZIMUTHS OBSERVED WITH COMPASS

Statement of evidence relative to this corner location is on back of page.

DATE
FILE WMA01198

I hereby certify that this document and the data contained herein was prepared by me or under my direct supervision.

John D. Walker 5/31/01
SIGNATURE DATE

License Number 16098

Land Surveyor, Professional Engineer
 County Surveyor, County Engineer

OFFICE OF THE COUNTY RECORDER
County of Cass

I hereby certify that this document was filed in the Co. recorders office at 2:10 P. M. on the 16th day of Oct. A.D., 2001

County Recorder Kathryn M. Norby
By John E. Maeder, Deputy

DOCUMENT NO. 441835

Northeast Corner Section 1, Township 135 North, Range 31 West

The Department of Natural Resources, Bureau of Engineering contacted the following offices for information regarding this corner:

MN Secretary of State
Cass County Surveyor
Widseth, Smith and Nolting of Brainerd
Landecker and Associates of Pequot Lakes
Landecker and Associates of Walker
Central Minnesota Surveying

1858 The US General Land Office field notes, on file in the Secretary of State's Office, show this corner to be marked with a post and the following bearing trees were marked:

Maple 12" N 38 ° E 24 links (15.84')
Black Oak 16" S 23° E 41 links (27.06')
Black Oak 14" N 55 ° W 56 links (36.96')
Linden 14" S 75° W 14 links (9.24')

1998 The DNR survey crew found a ½" iron pipe, down 6", 2' east of the centerline of a north-south gravel road and in the centerline of a gravel road east. A 3/4" x 24" iron rod with a MNDNR SURVEY MARKER cap was set in the top of the iron pipe, down 3". The Southeast Corner of Section 1 bears S 01°22'24"E 5286.45'.

For more information on our survey in this area please contact MN DNR, Bureau of Engineering, Survey Section, 1601 Minnesota Drive, Brainerd, MN 56425