

# CERTIFICATE OF LOCATION OF GOVERNMENT CORNER

North Quarter Corner of Section 2, Township 134 N, Range 31 W, 5TH P.M.

STATE OF MINNESOTA, County of CASS

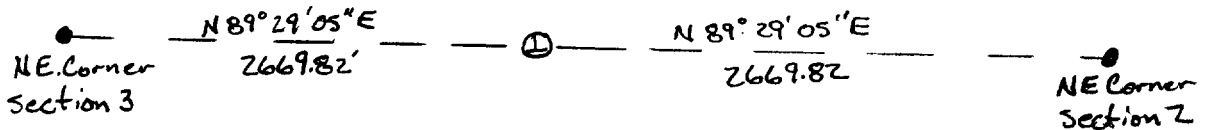
At the corner location shown on the sketch:

On \_\_\_\_\_ found a \_\_\_\_\_  
DATE

left monument as found,  lowered monument,  removed monument (explain)

On 1-5-99 Placed a 6' steel fence post, up 1', in Swamp  
DATE

### SKETCH OF REFERENCE TIES



NAD83 CASS CO.  
COORDINATES

N 209,373.36  
E 478,869.15

Abstract Document  
#441834

Statement of evidence relative to this corner location is on back of page.

DATE  
FILE WMA01198

I hereby certify that this document and the data contained herein was prepared by me or under

my direct supervision.  
John D. Weller 5/31/01  
SIGNATURE DATE

License Number 16098

Land Surveyor,  Professional Engineer  
 County Surveyor,  County Engineer

OFFICE OF THE COUNTY RECORDER

County of Cass

I hereby certify that this document was filed in the Co. recorders office at 2:08 P.M. on the 16th day of Oct. A.D., 2001

County Recorder Kathryn M. Norley  
By John F. Maeder, Deputy

DOCUMENT NO. 441834

**North Quarter Corner Section 2, Township 134 North, Range 31 West**

The Department of Natural Resources, Bureau of Engineering contacted the following offices for information regarding this corner:

MN Secretary of State  
Cass County Surveyor  
Widseth, Smith and Nolting of Brainerd  
Landecker and Associates of Pequot Lakes  
Landecker and Associates of Walker  
Central Minnesota Surveying

1858 The US General Land Office field notes, on file in the Secretary of State's Office, show this corner to be marked with a post and the following bearing trees were marked:

Tamarack 7" N 35° E 18 links  
Tamarack 6" S 75° E 13 links

1999 The DNR survey crew searched for evidence of this corner without success. The corner was computed at the lost position between section corners, 2669.82 feet from each corner. A 6 foot long steel fence was set to mark the corner, up 1', in a swamp.

For more information on our survey in this area please contact MN DNR, Bureau of Engineering, Survey Section, 1601 Minnesota Drive, Brainerd, MN 56425