

CERTIFICATE OF LOCATION OF GOVERNMENT CORNER

I hereby certify that this survey, plan, or report was prepared by me or under my direct supervision and that I am a duly Licensed Land Surveyor under the laws of the State of Minnesota.

Tom L. Jan

Date: 9/6/01 License No: 21367

OFFICE OF THE COUNTY RECORDER
County of CASS

I hereby certify that this document was filed in the Office of the County Recorder at 10:30 o'clock A.M. on the 10th day of Sept., 20 01 A.D.

County Recorder Kathryn M. Norby
By: John P. Maeder, Deputy
DOCUMENT NO. 440132

NORTHEAST CORNER Corner of Section 5, Township 141 N, Range 31 W, 5TH P.M.

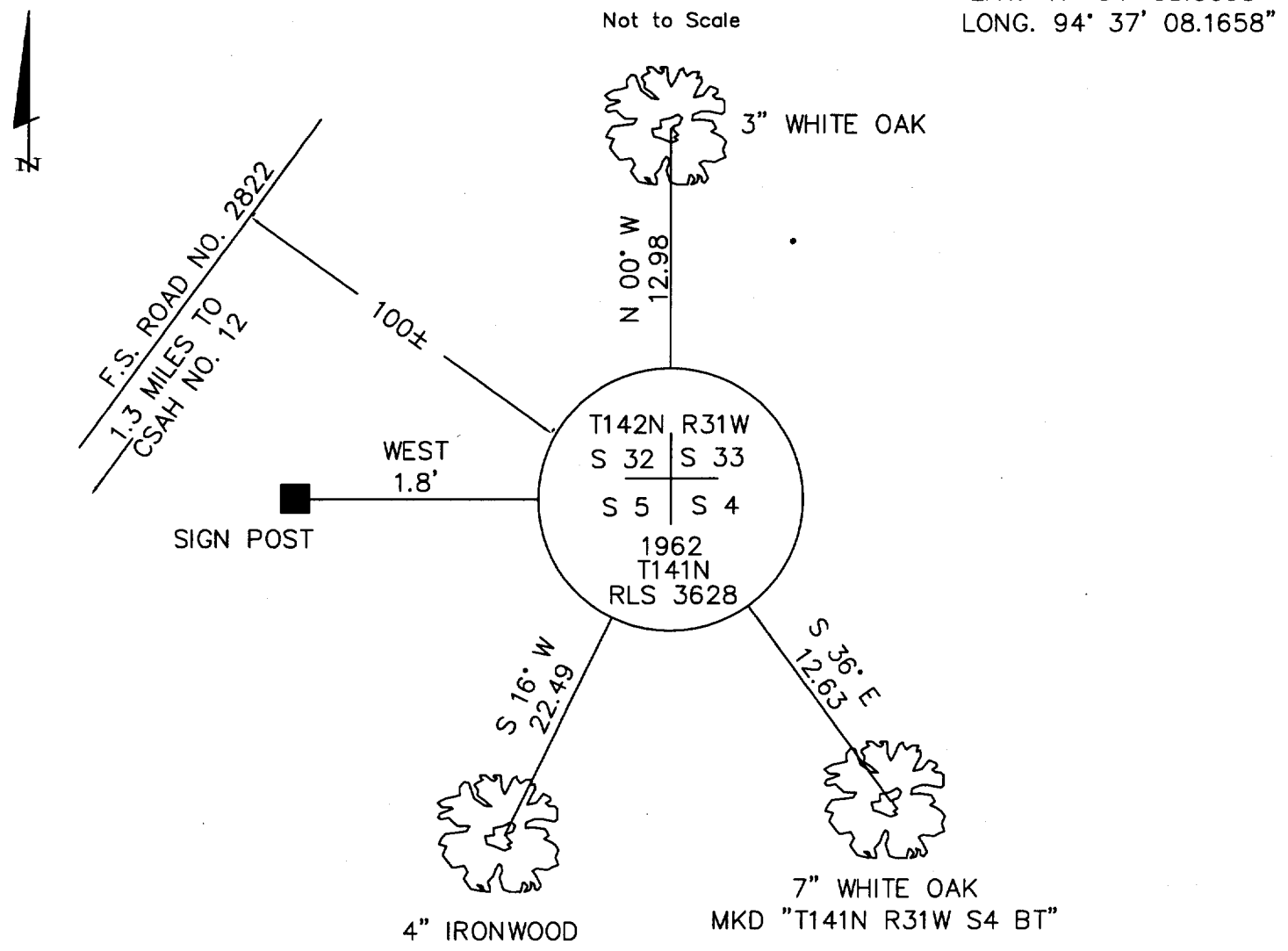
- On 5/10/01 found a 2 1/2" IRON MONUMENT WITH BRASS CAP UP 18"
- left monument as found, lowered monument, removed monument (explain)
- On _____ placed a _____

decl: 5° E (ASSUMED)

SKETCH OF REFERENCE TIES

LAT. 47° 04' 08.5098"
LONG. 94° 37' 08.1658"

Not to Scale



Statement of evidence for this corner position is on the back of this page

STATEMENT OF EVIDENCE

Index No. A - 9

Northeast corner, Section 5, Township 141 North, Range 31 West, Cass County, Minnesota

1873 P. H. Conger, U.S. Deputy Surveyor, originally established this corner position while running the south line of Township 142 North, Range 31 West. A wood post was set to mark the corner position with the following witnesses: A 3" Poplar, North 61 degrees East, 13 links; a 3" Poplar, North 25 degrees West, 13 links; a 4" Poplar, South 27 degrees West, 31 links; a 3" Poplar, South 47 degrees East, 10 links.

1916 County Survey Record Book "C", p. 121, shows a survey by John Curo, Cass County Surveyor. He set a wood post and tack for true corner from railroad information.

1917 Curo microfilm roll 11 S, Bk. 56, p. 67-68, shows a survey by E. B. Horst. He set an iron monument proportionally.

1919 County Survey Record Book "C", p. 499, shows a survey by E. B. Horst. He found an iron monument.

1919 County Resurvey plat by E. B. Horst of Section 32 shows an iron monument.

1925 County resurvey plat by John Greene shows the subdivision of Section 32 moving the corner as established in the 1919 survey to the position established in 1916.

1925 County resurvey plat by John Greene shows the subdivision of Section 4, Township 141 North, Range 31 West, shows an iron monument at this corner.

1962 Peter J. Meyer, RLS 3628, found 2" x 48" iron monument in place marking corner position beside an old fence line. At that exact position set a 2" inside diameter, 5' long galvanized iron pipe filled with concrete and capped with a 3" bronze tablet from which the following accessories: A 6" Elm, North 50 degrees West, 25.8 feet, MKD S32 BT; a 7" Oak, North 24 degrees East, 56.3 feet MKD S33 BT; a rock, 3' x 2.5' x 1.0' high, South 62 1/2 degrees East, 6.0' to top center; a steel sign post 72" long, 24" in the ground 1.8' west.

2001 July 25, a Landecker & Associates, Inc. survey crew found a 2" galvanized iron pipe up 18" with bronze tablet and with capped iron pipe alongside. The 1962 BT's were found dead and down. Found a steel sign post bears west 1.8' and rock SE. New accessories were established as noted on front of this Certificate. Corner is accepted as perpetuation from the position established in 1916.