

CERTIFICATE OF LOCATION OF GOVERNMENT CORNER

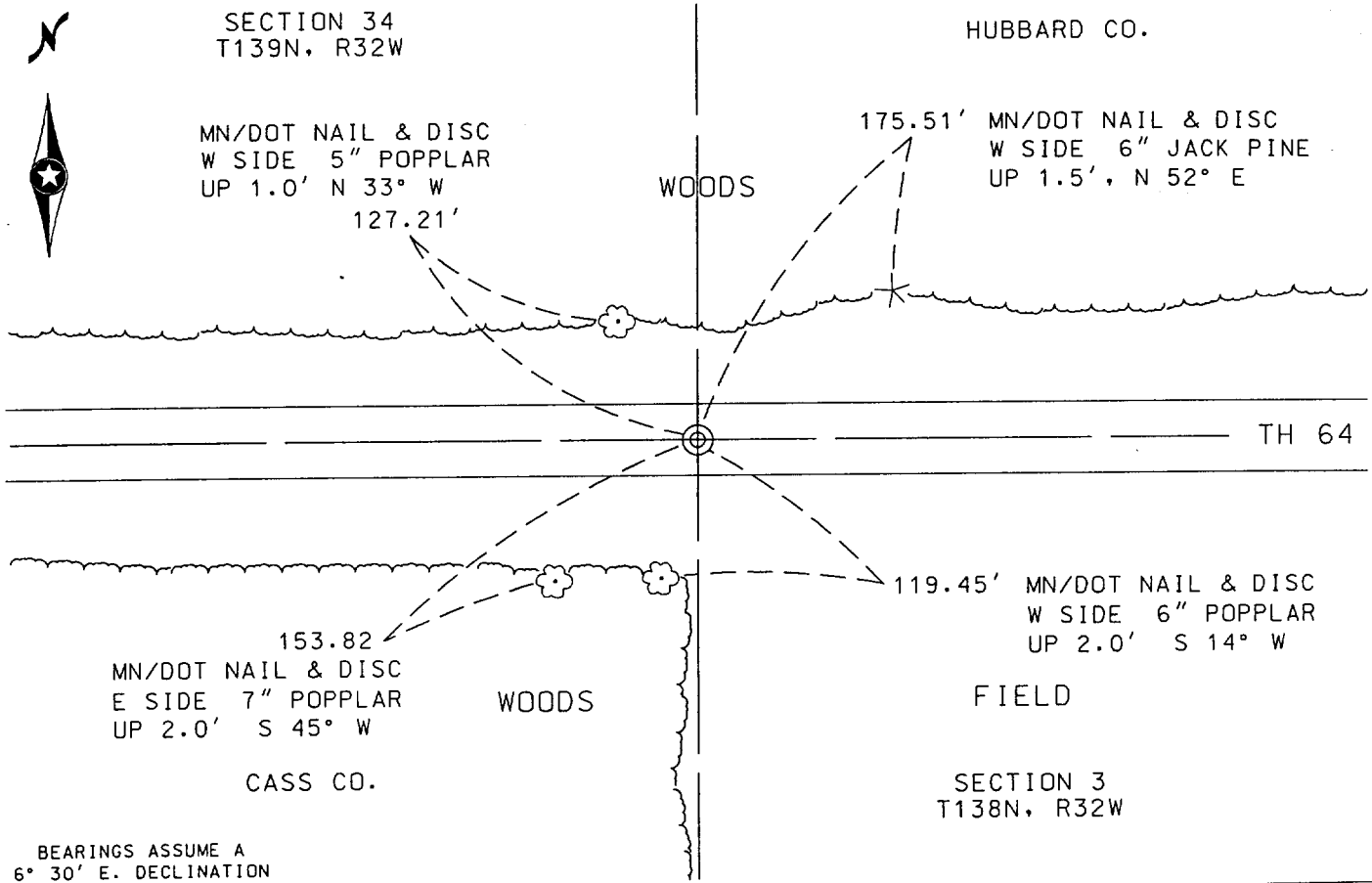
NORTH QUARTER Corner of Section 3, Township 138N, Range 32W, 5th P.M.

STATE OF MINNESOTA, County of CASS

At the corner location shown on the sketch:

- On _____ found a _____
DATE
- left monument as found, lowered monument, removed monument (explain)
- On 8-15-00 placed a 3/4" IRON PIN WITH ALUMINUM CAP FLUSH.
DATE

SKETCH OF REFERENCE TIES



Statement of evidence relative to this corner location is on back of page. 434533

I hereby certify that this document and the data contained herein was prepared by me or under my direct supervision.

Daniel J. Domslein 3/26/2001
SIGNATURE DATE

Registration No. 23037

- Land Surveyor, Professional Engineer
 County Surveyor, County Engineer

OFFICE OF THE COUNTY RECORDER

County of Cass
I hereby certify that this document was filed in the Co. Recorder's Office at 3:00 P.M. on the 11th day of April A.D., 2001
County Recorder Kathryn M. Norby
By K.J., Deputy
DOCUMENT NO. 434533

Statement of Evidence: North Quarter Corner of Section 3, Township 138 North,
Range 32 West of the 5th Principal Meridian.

For statement of evidence see document number 408858 dated 01/14/99.

The monument in the above document was destroyed by road construction of T.H. 64.
In 2000, a new monument was set by coordinate values of record for this corner.