

CERTIFICATE OF LOCATION OF GOVERNMENT CORNER

Northeast Corner of Section 21, Township 138N, Range 32W, 5TH P.M.

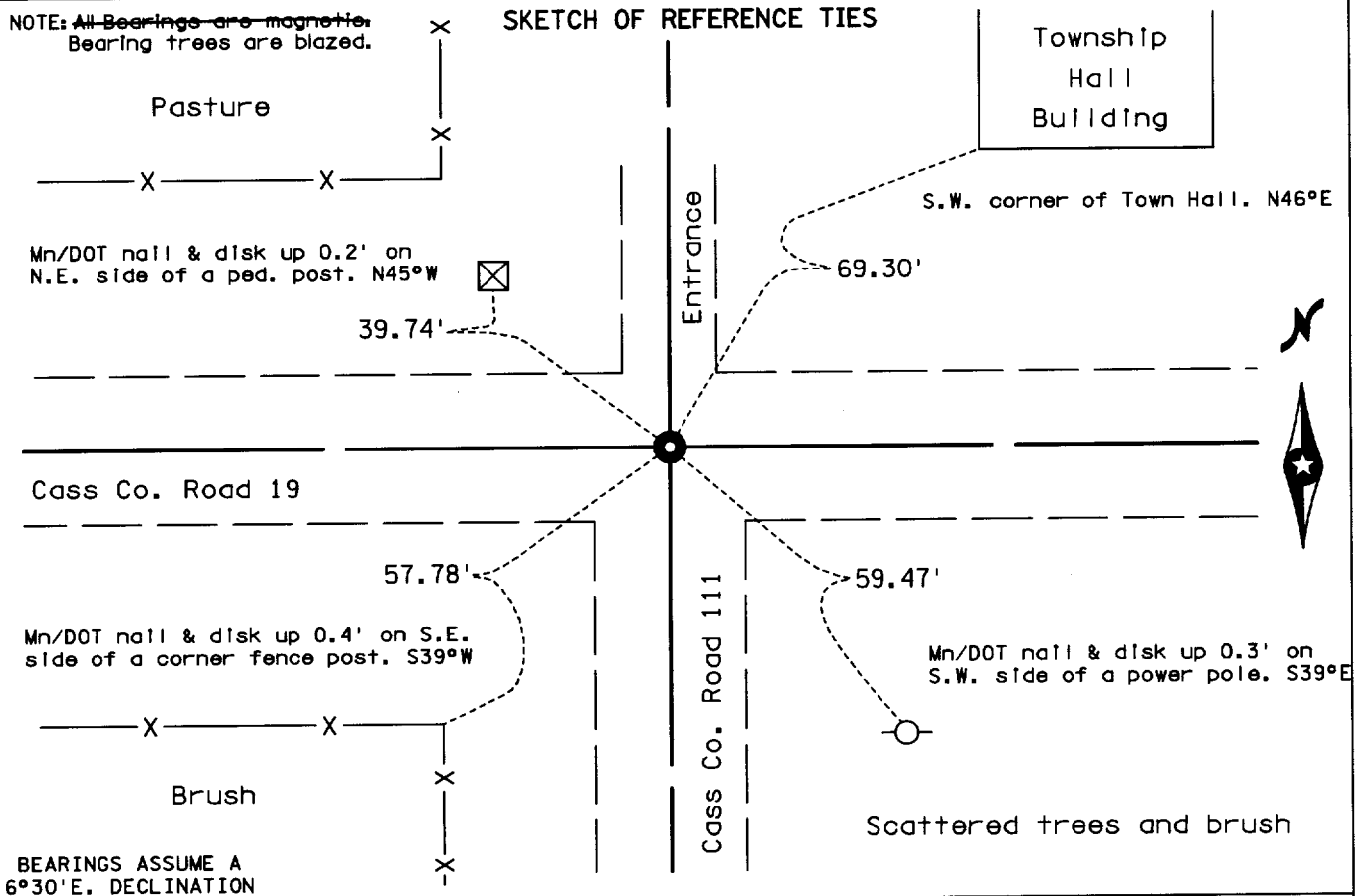
STATE OF MINNESOTA, County of Cass

At the corner location shown on the sketch

- ON 5/14/97 found an 8" X 8" X 36" concrete monument 1.3' below the road surface.
- left monument as found, lowered monument, removed monument (explain)
- ON 5/14/97 placed a 3/4" Iron pin on the south edge of the concrete monument.

NOTE: ~~All Bearings are magnetic.~~
Bearing trees are blazed.

SKETCH OF REFERENCE TIES



BEARINGS ASSUME A
6°30'E. DECLINATION

Statement of evidence relative to this corner is on back of page

433380

I hereby certify that this document and the data contained herein was prepared by me or under my direct supervision.

Kenneth R. Donaghy 7/17/97
SIGNATURE DATE

Registration No. 14950

- Land surveyor, Professional Engineer
- County Surveyor, County Engineer

OFFICE OF THE COUNTY RECORDER

County of Cass

I hereby certify that this document was filed in the Co. Recorders office at 11:45 A.M. on the 5th day of March A.D., 1920

County Recorder Claudine Kaylor
By John C. Maeder, Deputy

DOCUMENT NO. 433380

Statement of Evidence:

NORTHEAST CORNER SECTION 21, TOWNSHIP 138 NORTH,
RANGE 32 WEST OF THE FIFTH PRINCIPAL MERIDIAN

The original Public Land Survey was run by Mahlon Black in 1870. A post was set to mark the corner and three bearing trees were recorded as accessories; a 4- inch Aspen North 20 degrees West 7 links, a 10- inch Black Pine North 80 1/2 degrees East 172 links and a 10- inch Black Pine South 85 degrees East 200 links.

In 1912, John Curo, Cass County Surveyor, searched for the post and accessories established by Black in 1870. No physical evidence from 1870 could be found but a stake and accessories established by John Usher, Cass County Deputy Surveyor, were recovered. The stake was removed and an 8 inch by 8 inch by 36 inch cement post was placed in a road center for the true corner.

May 14, 1997, Charles Frach and Allen Sprague of the Minnesota Department of Transportation recovered the cement post placed by Curo in 1912, 1.3 feet below the surface of County Road No. 19. The cement post was left in place and an iron pin was placed on the south edge of the cement post.

The cement post placed by Curo in 1912 and recovered by Frach and Sprague in 1997 was accepted as marking this Public Land Survey corner. This position was determined by John Usher at time when original evidence was readily available and is in agreement with recent survey measurements and occupation lines of long standing.

For recent survey measurements and additional information contact the Surveys Section of the Minnesota Department of Transportation in Bemidji.