

CERTIFICATE OF LOCATION OF GOVERNMENT CORNER

Northeast Corner of Section 10, Township 138N, Range 32W, 5TH P.M.

STATE OF MINNESOTA, County of Cass

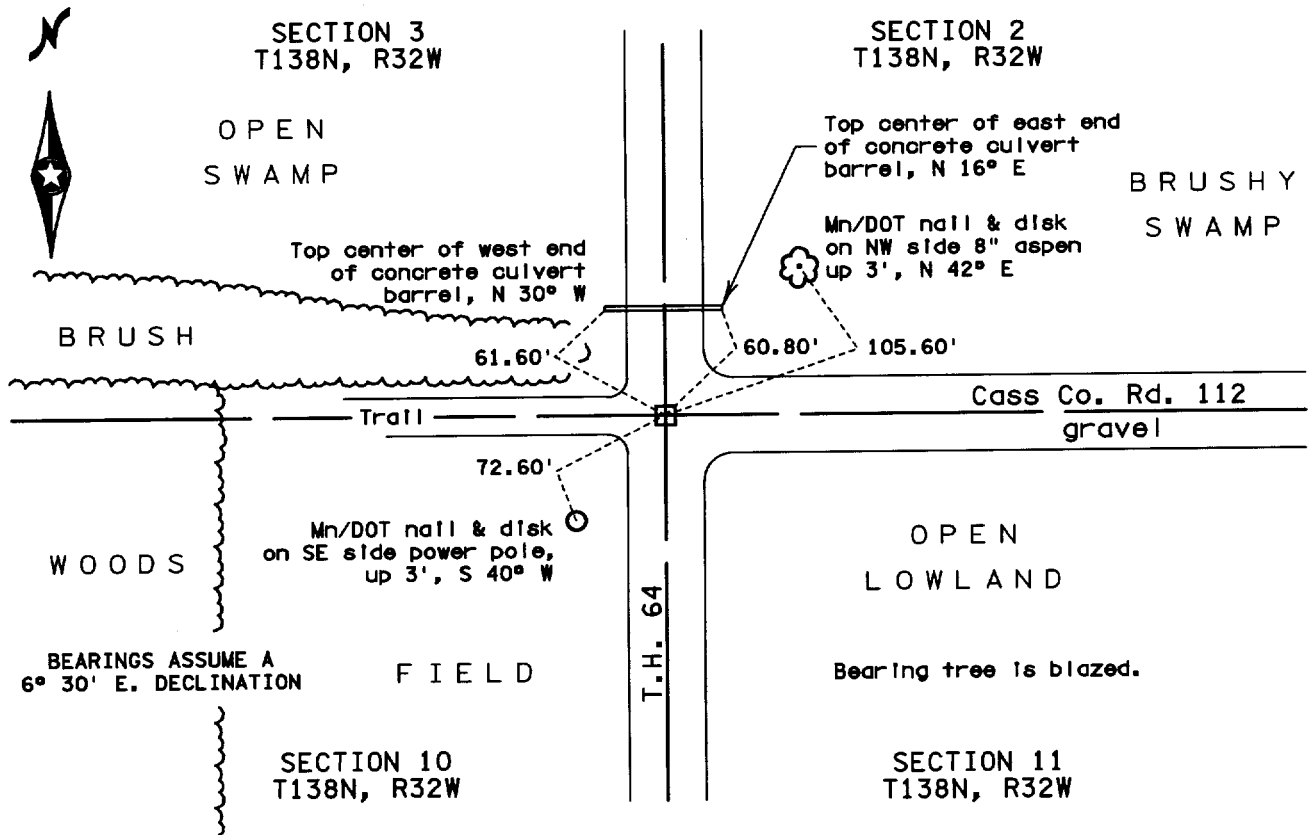
At the corner location shown on the sketch

ON 10-14-93 found 8"x8"x36" concrete monument

left monument as found, lowered monument, removed monument (explain)

ON 10-14-93 placed a 3/4 " diameter iron pin
above concrete monument

SKETCH OF REFERENCE TIES



Statement of evidence relative to this corner is on back of page # 433379

I hereby certify that this document and the data contained herein was prepared by me or under my direct supervision.

Kenneth R. Donoghue 5/27/97
SIGNATURE DATE

Registration No. 14950

Land surveyor, Professional Engineer

County Surveyor, County Engineer

OFFICE OF THE COUNTY RECORDER

County of Cass

I hereby certify that this document was filed in the Co. Recorders office at 11:40 A.M. on the 5th day of March A.D., 1997

County Recorder Claudine Kayler

By John F. Mader, Deputy

DOCUMENT NO. 433379

Statement of Evidence

NORTHEAST CORNER OF SECTION 10, TOWNSHIP 138 NORTH,
RANGE 32 WEST OF THE FIFTH PRINCIPAL MERIDIAN

The original Public Land Survey was run by Mahlon Black in 1870. A post was set to mark the corner and four bearing trees were recorded as accessories; a 9-inch Tamarack North $46\frac{1}{2}$ degrees East 32 links, a 7-inch Tamarack North $15\frac{1}{2}$ degrees West 33 links, a 9-inch Tamarack South 48 degrees East 12 links, and a 5-inch Tamarack South 6 degrees West 6 links.

In 1912, John Curo recovered the post and bearing trees recorded by Black in 1870. A concrete monument measuring 8 inches square and 36 inches long was placed to mark this corner.

On October 14, 1993, Todd Larson and Richard Hilliard of the Minnesota Department of Transportation recovered the concrete monument placed by Curo in 1912 to mark this corner.

The location of this Public Land Survey Corner has been perpetuated by the recovery of the post and placement of the concrete monument by Curo in 1912 and recovery of the concrete monument by Larson and Hilliard in 1993. A $\frac{3}{4}$ -inch iron pin was placed above the concrete monument to mark this corner.

For additional information and recent survey measurements, contact the Surveys Office of the Minnesota Department of Transportation in Bemidji.