

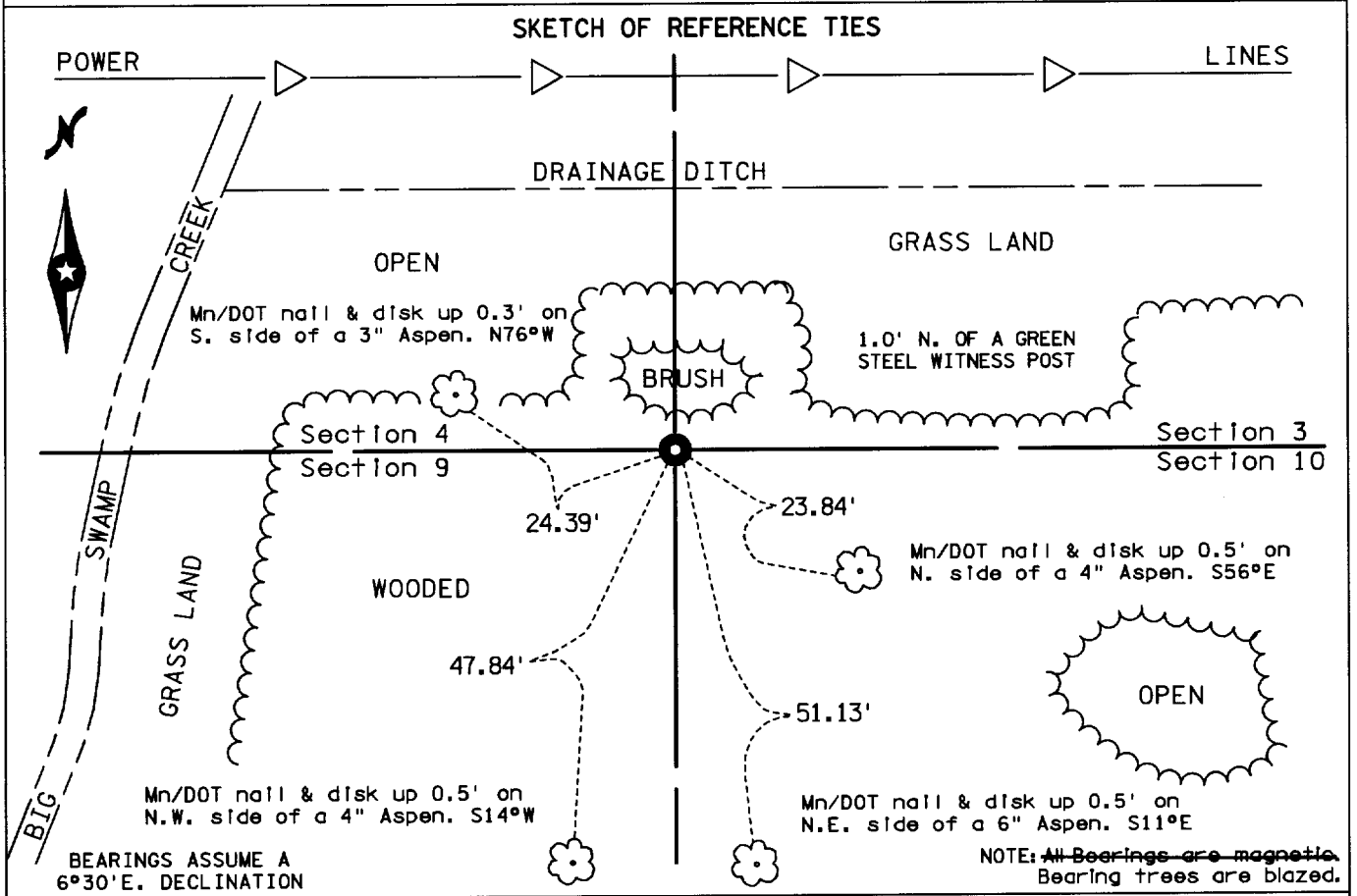
CERTIFICATE OF LOCATION OF GOVERNMENT CORNER

Northeast Corner of Section 9, Township 138N, Range 32W, 5TH P.M.

STATE OF MINNESOTA, County of Cass

At the corner location shown on the sketch

- ON _____ found _____
- left monument as found, lowered monument, removed monument (explain)
- ON 5/27/97 placed a MnDOT square steel perforated monument with an aluminum cap. Top of the monument is 0.3' above the ground.



Statement of evidence relative to this corner is on back of page

433377

I hereby certify that this document and the data contained herein was prepared by me or under my direct supervision.

Kenneth R. Donoghue 7/17/97
SIGNATURE DATE

Registration No. 14950

- Land surveyor, Professional Engineer
- County Surveyor, County Engineer

OFFICE OF THE COUNTY RECORDER

County of Cass

I hereby certify that this document was filed in the Co. Recorders office at 11:30 A.M. on the 5th day of March A.D., 1997

County Recorder Claudia Kaylar
By John E. Maeder, Deputy

DOCUMENT NO. 433377

Statement of Evidence:

NORTHEAST CORNER SECTION 9, TOWNSHIP 138 NORTH,
RANGE 32 WEST OF THE FIFTH PRINCIPAL MERIDIAN

The original Public Land Survey was run by Mahlon Black in 1870. A post was set to mark the corner and four bearing trees were recorded as accessories; an 7- inch Tamarack South 55 degrees West 11 links, a 7- inch Tamarack North 53 1/2 degrees East 15 links, a 4- inch Tamarack South 25 ½ degrees East 8 links and a 7- inch Tamarack North 28 ½ degrees West 9 links.

In 1996 the Minnesota Department of Transportation conducted an intensive search for additional document, physical and parole evidence for this corner. None could be found.

Analysis of the above information indicates that this Public Land Survey corner is lost. May 27, 1997 a Mn/DOT square steel perforated tube with an aluminum cap was placed in lost position to mark this corner; a double proportion measurement between the northeast corners of Sections 4, 7, 10, and 21.

For recent survey measurements and additional information contact the Surveys Section of the Minnesota Department of Transportation in Bemidji.