

432826

OFFICE OF COUNTY RECORDER

State of Minnesota, County of Cass  
I hereby certify that the within instrument  
was filed in this office for record on the  
8 day of Feb. A.D. 20 01  
at 11:00 O'clock A M and was duly  
recorded as Micro Doc. No. 432826

*Claudia Kayler*  
COUNTY RECORDER *JKM*

N-13

CERTIFICATE OF LOCATION OF GOVERNMENT CORNER

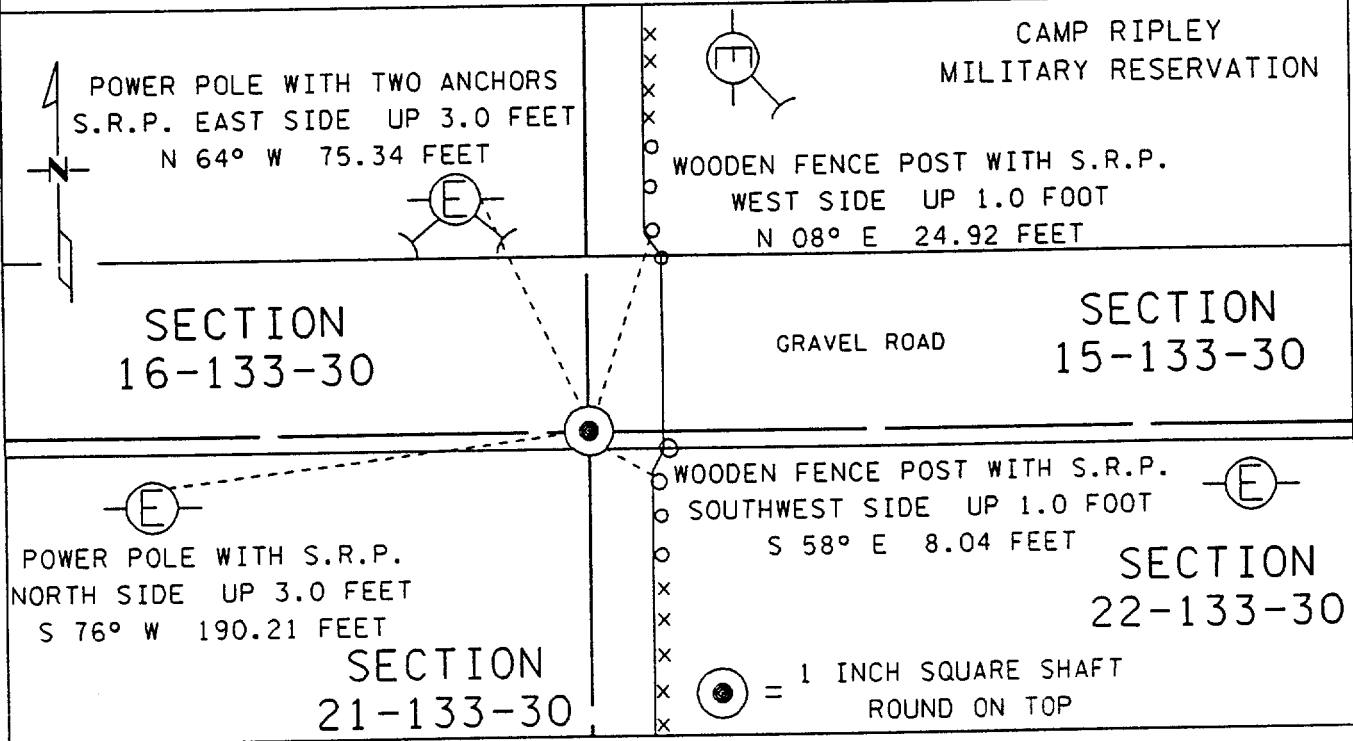
NORTHEAST Corner of Section 21, Township 133, Range 30  
5 TH Principal Meridian, State of Minnesota, County of MORRISON

At the corner location shown on the sketch:

On 6-16-99 found a ONE INCH SQUARE SHAFT ROUNDED ON TOP  
DATE

left monument as found     lowered monument     removed monument (explain)

On \_\_\_\_\_ placed a \_\_\_\_\_  
DATE



Statement of evidence for this corner location is on back of this page.

I hereby certify that this document was researched and prepared by me or under my direct supervision.

Signature *Jamie Klamm* Date 1-11-2001 License No. 23668

Title:  Land Surveyor     Professional Engineer     County Surveyor     County Engineer

Statement of Evidence: Northeast Corner Section 21, Township 133 North, Range 30 West,  
5<sup>th</sup> Principal Meridian, Morrison County, Minnesota.

The original public land survey was run in 1870, and a wood post was set to mark the corner.

On September 3, 1964, Mr. Dean Anderson recovered the corner and established ties to a power pole and a hub. ( Book 146, Page 77 )

On June 27, 1967, Mr. Dean Anderson recovered the corner and used it to set the North Quarter Corner of Section 21. ( Book 187, Page 44 )

On June 16, 1999, The Minnesota Department of Transportation recovered a one inch square shaft, rounded near the top. Bearing ties were made to two power poles and two wooden fence posts. The Minnesota Department of Transportation accepts this position as the correct location for the corner.

For details and survey analysis, contact the Minnesota Department of Transportation District Surveys Office in Baxter, Minnesota.