

432825

OFFICE OF COUNTY RECORDER

State of Minnesota, County of Cass

I hereby certify that the within instrument was filed in this office for record on the

8 day of Feb. A.D. 20 01

at 10:50 O'clock A M and was duly

recorded as Micro Doc. No. 432825

Claudia Kayser
COUNTY RECORDER

N-11

CERTIFICATE OF LOCATION OF GOVERNMENT CORNER

NORTH QUARTER Corner of Section 21, Township 133, Range 30

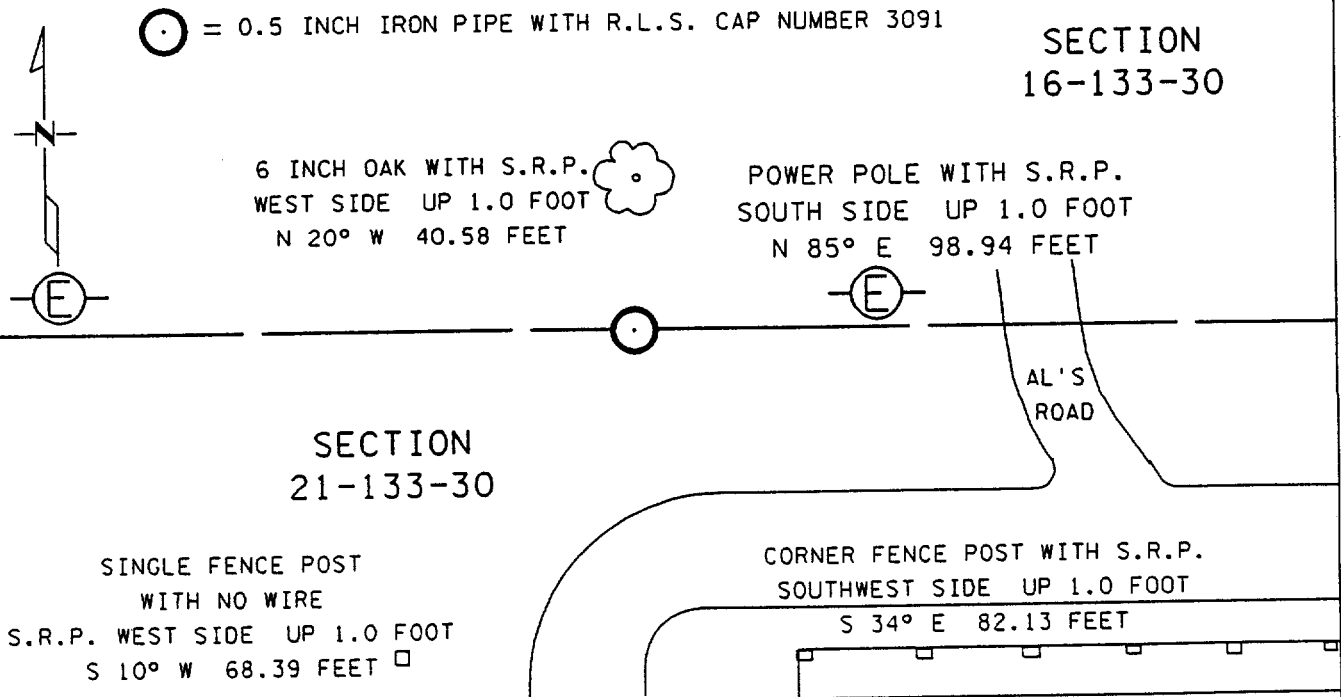
5 TH Principal Meridian, State of Minnesota, County of MORRISON

At the corner location shown on the sketch:

On 6-16-99 found a 0.5 INCH IRON PIPE WITH R.L.S. CAP NUMBER 3091
DATE

left monument as found lowered monument removed monument (explain)

On _____ placed a _____
DATE



Statement of evidence for this corner location is on back of this page.

I hereby certify that this document was researched and prepared by me or under my direct supervision.

Signature Jane Krum Date 1-11-2001 License No. 23668

Title: Land Surveyor Professional Engineer County Surveyor County Engineer

Statement of Evidence: North Quarter Corner Section 21, Township 133 North, Range 30 West, 5th Principal Meridian, Morrison County, Minnesota.

The original public land survey was run in 1870 and a wood post was set to mark the corner.

On June 27, 1967, Mr Dean Anderson set the corner and established ties to two birch trees and a power pole.

On June 16, 1999, The Minnesota Department of Transportation recovered a 0.5 inch iron pipe with R.L.S. cap number 3091. Bearing ties were made to a power pole, a wooden fence post, and an oak tree. The Minnesota Department of Transportation accepts this position as the correct location for the corner.

For details and survey analysis, contact the Minnesota Department of Transportation District Surveys Office in Baxter, Minnesota.