

State of Minnesota, County of Cass  
I hereby certify that the within instrument  
was filed in this office for record on the  
8 day of Feb. A.D. 20 01  
at 10:30 O'clock A M and was duly  
recorded as Micro Doc. No. 432823

Claudia Kayser  
COUNTY RECORDER *for*

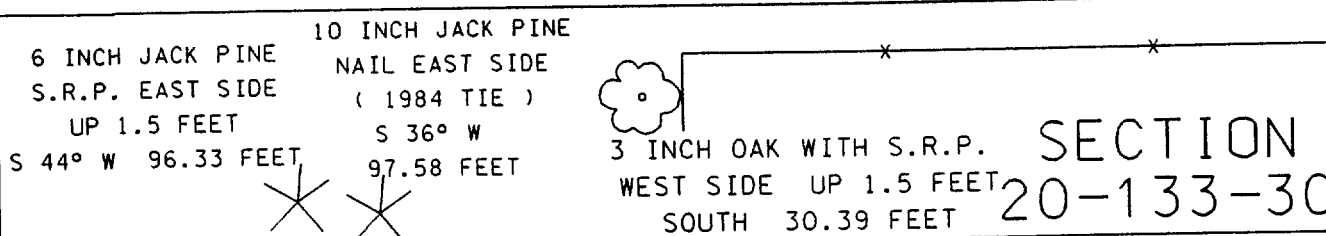
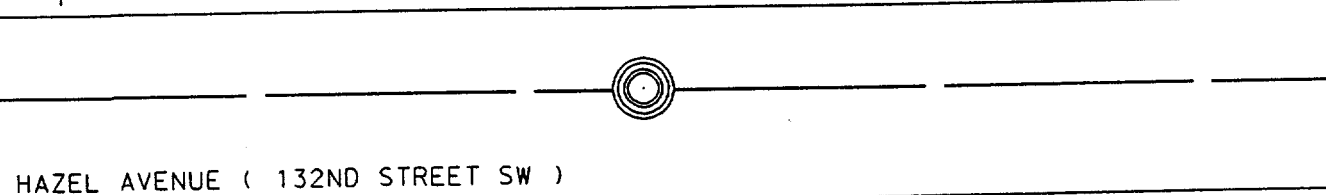
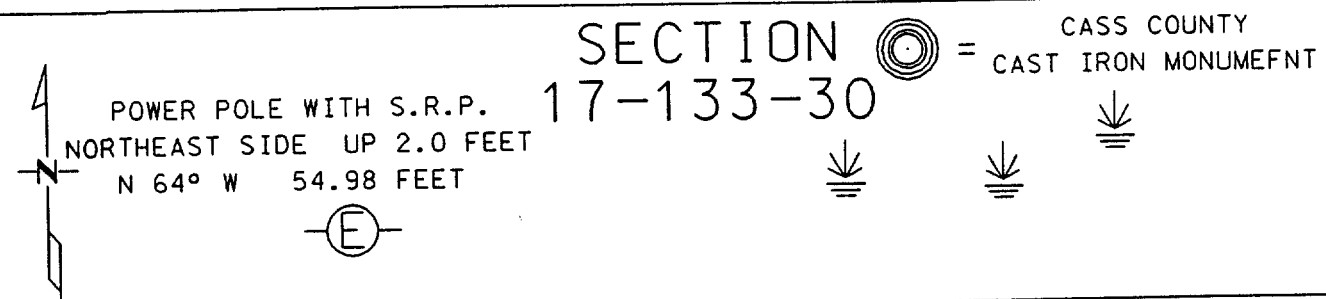
N-7

# CERTIFICATE OF LOCATION OF GOVERNMENT CORNER

NORTH QUARTER Corner of Section 20, Township 133, Range 30  
5 TH Principal Meridian, State of Minnesota, County of CASS

At the corner location shown on the sketch:

- On 6-16-99 found a CASS COUNTY CAST IRON MONUMENT  
DATE
- left monument as found     lowered monument     removed monument (explain)
- On \_\_\_\_\_ placed a \_\_\_\_\_  
DATE



Statement of evidence for this corner location is on back of this page.

I hereby certify that this document was researched and prepared by me or under my direct supervision.

Signature James Krumm Date 1-11-2001 License No. 23668

Title:  Land Surveyor     Professional Engineer     County Surveyor     County Engineer

Statement of Evidence: North Quarter Corner Section 20, Township 133 North, Range 30 West,  
5<sup>th</sup> Principal Meridian, Cass County, Minnesota.

The original public land survey was run in 1870 and a wood post was used to mark the corner. Bearing tree ties were made to an aspen and a black pine.

In 1915, the corner was recovered ( Book 5, Box 2, Page 17 of County Ditch Survey records )

In 1984, Comstock and Davis set a Cass County Cast Iron Monument and established bearing ties to a power pole, a jack pine, and an aspen. ( Doc. Number 276578 )

On June 16, 1999, The Minnesota Department of Transportation recovered a Cass County Cast Iron Monument and one bearing tie from 1984. Additional bearing ties were made to a power pole, a jack pine, and an oak. The Minnesota Department of Transportation accepts this position as the correct location for the corner.

For details and survey analysis, contact the Minnesota Department of Transportation District Surveys Office in Baxter, Minnesota.