

432822

OFFICE OF COUNTY RECORDER

State of Minnesota, County of Cass  
I hereby certify that the within instrument  
was filed in this office for record on the  
8 day of Feb. A.D. 20 01  
at 10:20 O'clock A M and was duly  
recorded as Micro Doc. No. 432822

Claudia Kayser  
COUNTY RECORDER

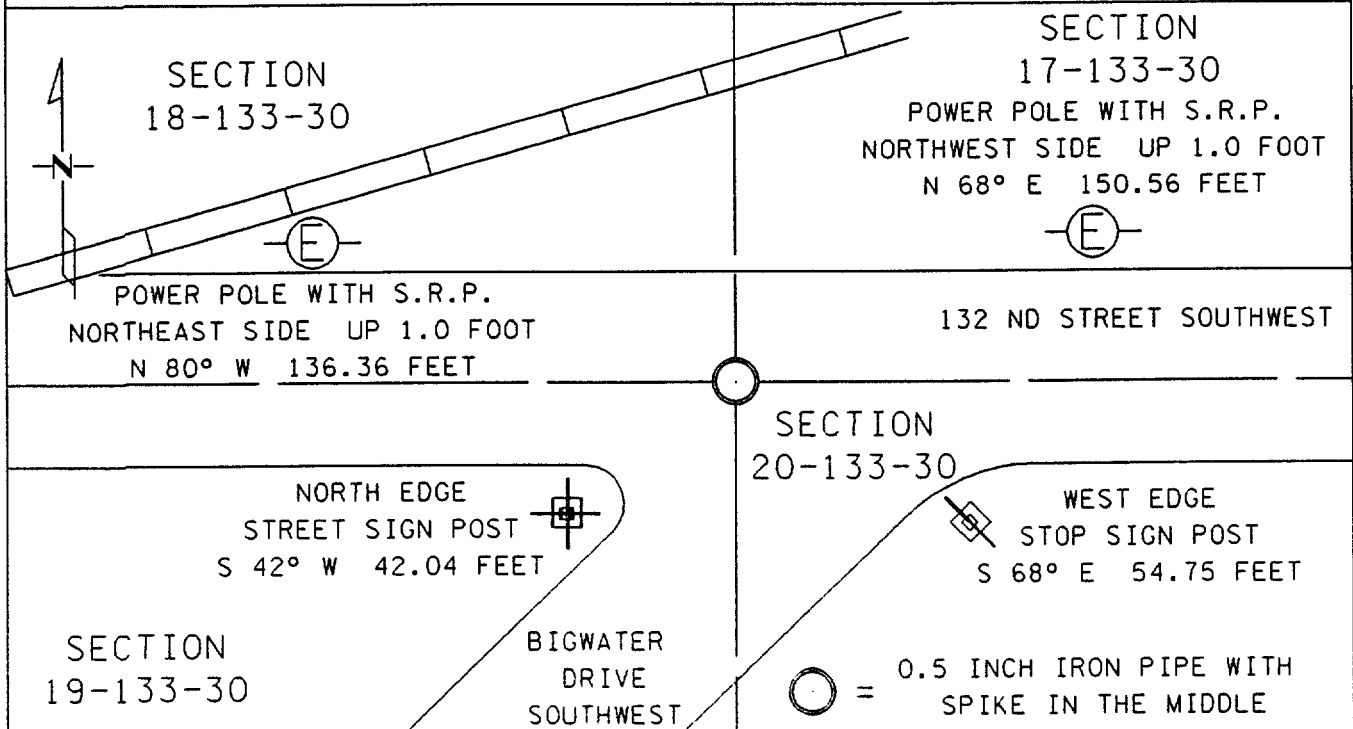
N-5

CERTIFICATE OF LOCATION OF GOVERNMENT CORNER

NORTHEAST Corner of Section 19, Township 133, Range 30  
5 TH Principal Meridian, State of Minnesota, County of CASS

At the corner location shown on the sketch:

- On 6-16-99 found a 0.5 INCH IRON PIPE WITH A SPIKE IN THE MIDDLE  
DATE DOWN 0.5 FEET 2 FEET SOUTH OF CENTERLINE 132 ND STREET
- left monument as found     lowered monument     removed monument (explain)
- On \_\_\_\_\_ placed a \_\_\_\_\_  
DATE



Statement of evidence for this corner location is on back of this page.

I hereby certify that this document was researched and prepared by me or under my direct supervision.

Signature James K... Date 1-11-2001 License No. 23668  
 Title:  Land Surveyor     Professional Engineer     County Surveyor     County Engineer

Statement of Evidence: Northeast Corner Section 19, Township 133 North, Range 30 West,  
5<sup>th</sup> Principal Meridian, Cass County, Minnesota.

The original public land survey was run in 1870, and a wood post was set to mark the corner. Bearing tree ties were made to three black pines and an aspen.

In 1915, the corner was recovered. ( Book 5, Box 2, Page 13 of County Ditch Survey Books ).

On June 16, 1999, The Minnesota Department of Transportation searched the area of the corner and recovered a 0.5 inch iron pipe with a spike in the middle. Bearing ties were made to two sign posts and two power poles.. The Minnesota Department of Transportation accepts this position as the correct location for the corner.

For details and survey analysis, contact the Minnesota Department of Transportation District Surveys Office in Baxter, Minnesota.