

432821

OFFICE OF COUNTY RECORDER

State of Minnesota, County of Cass

I hereby certify that the within instrument was filed in this office for record on the

8 day of Feb. A.D. 20 01

at 10:10 O'clock A M and was duly

recorded as Micro Doc. No. 432821

Claudia Kayser

COUNTY RECORDER

L-13

CERTIFICATE OF LOCATION OF GOVERNMENT CORNER

EAST QUARTER Corner of Section 16, Township 133, Range 30

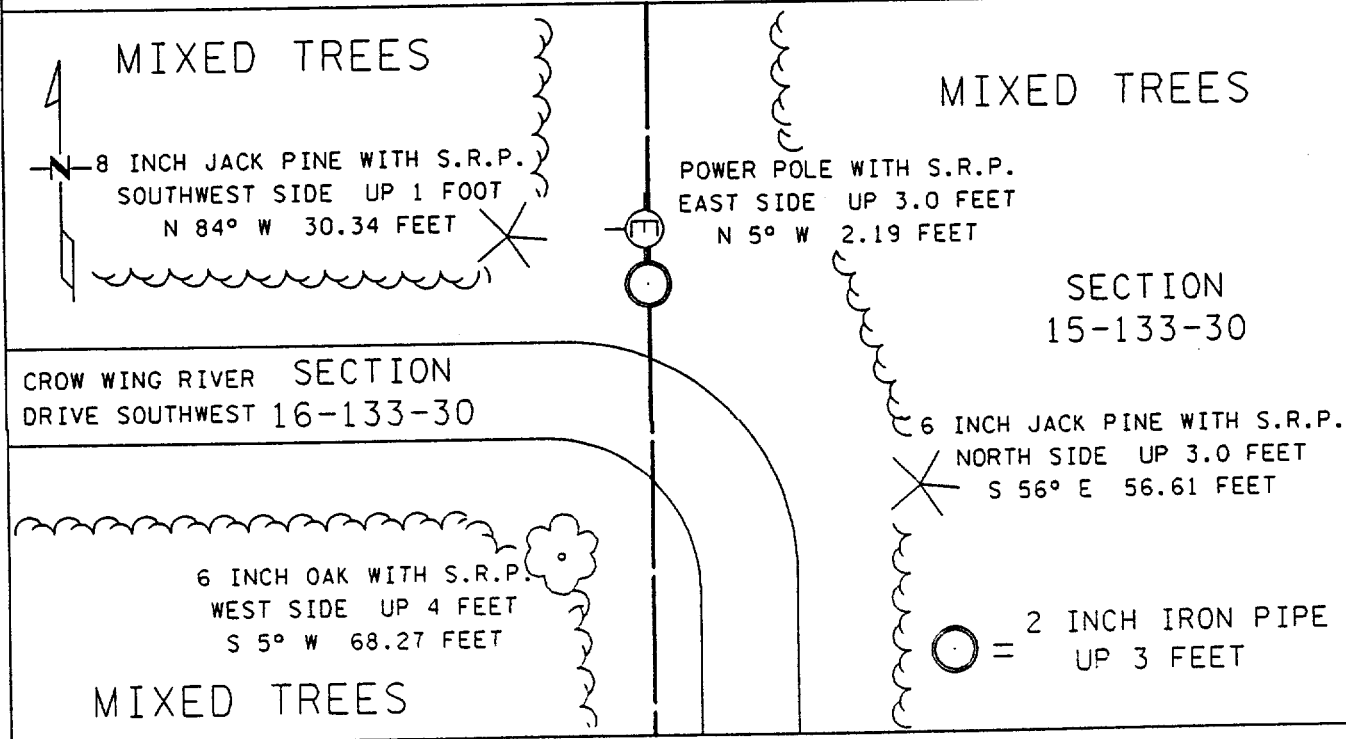
5 TH Principal Meridian, State of Minnesota, County of CASS

At the corner location shown on the sketch:

On 6-16-99 found a 2 INCH IRON PIPE

left monument as found lowered monument removed monument (explain)

On _____ placed a _____



Statement of evidence for this corner location is on back of this page.

I hereby certify that this document was researched and prepared by me or under my direct supervision.

Signature James Kramm

Date 1-11-2001

License No. 23668

Title:

Land Surveyor

Professional Engineer

County Surveyor

County Engineer

Statement of Evidence: East Quarter Corner Section 16, Township 133 North, Range 30 West,
5th Principal Meridian, Cass County, Minnesota.

The original public land survey was run in 1870, and a wood post was set to mark the corner. Bearing tree ties were made to two black pines.

In 1965, Mr. R. F. Schneider calls for a two inch iron pipe in place, bearing ties were made to two jack pines and a power pole (Book 'D' p. 472).

On June 16, 1999, The Minnesota Department of Transportation recovered a 2-inch pipe up 3.0 feet. Bearing ties were made to two jack pines, an oak, and a power pole. The Minnesota Department of Transportation accepts this position as the correct location for the corner.

For details and survey analysis, contact the Minnesota Department of Transportation District Surveys Office in Baxter, Minnesota.