

432819

OFFICE OF COUNTY RECORDER

State of Minnesota, County of Cass
I hereby certify that the within instrument
was filed in this office for record on the
8 day of Feb. A.D. 2001
at 9:50 O'clock A M and was duly
recorded as Micro Doc. No. 432819

Claudine Kayler
COUNTY RECORDER *fm*

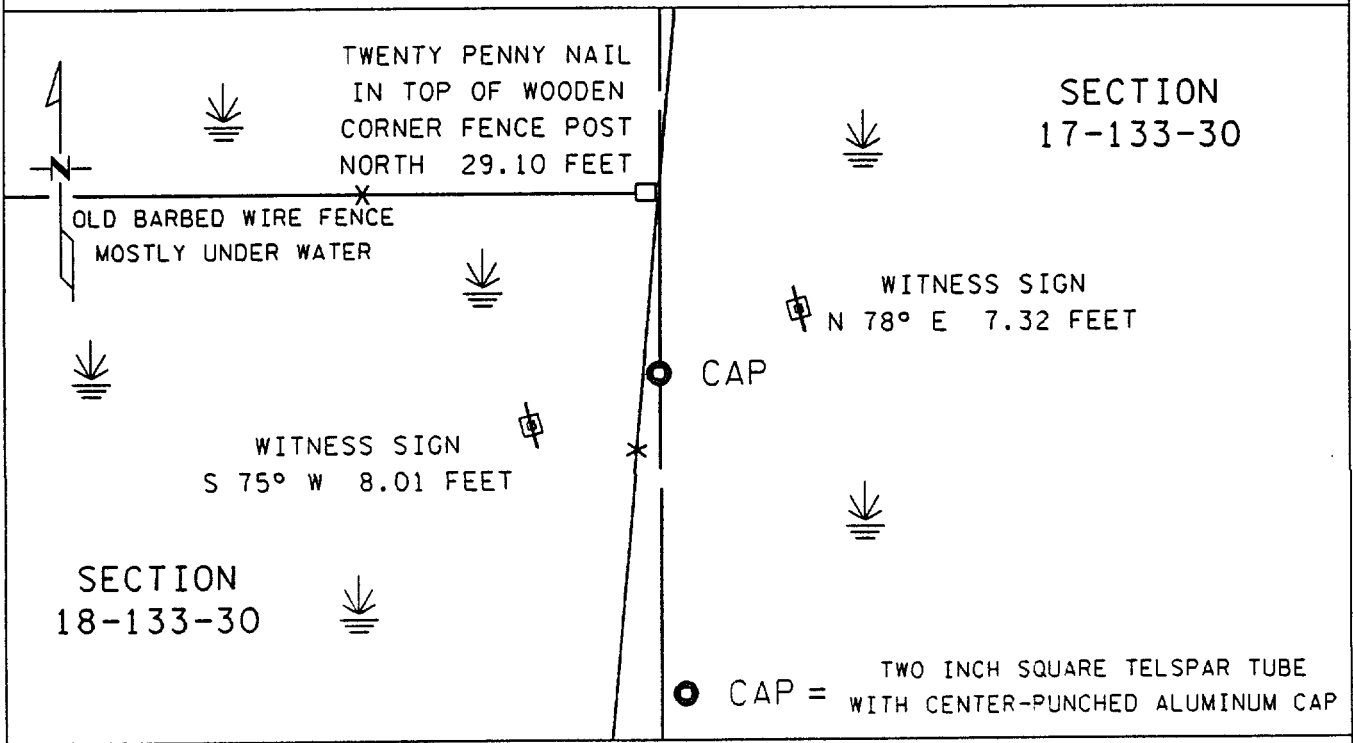
L-5

CERTIFICATE OF LOCATION OF GOVERNMENT CORNER

EAST QUARTER Corner of Section 18, Township 133, Range 30
5 TH Principal Meridian, State of Minnesota, County of CASS

At the corner location shown on the sketch:

- On 12-5-2000 found a NOTHING
DATE
- left monument as found lowered monument removed monument (explain)
- On 12-5-2000 placed a 2 INCH SQUARE TELSPAR TUBE WITH CENTER-PUNCHED
DATE
ALUMINUM CAP BOLTED BETWEEN TWO DRIVEN SEVEN FOOT LONG STEEL FENCE POSTS



Statement of evidence for this corner location is on back of this page.

I hereby certify that this document was researched and prepared by me or under my direct supervision.

Signature Jamie Klamm Date 1-11-2001 License No. 23668
Title: Land Surveyor Professional Engineer County Surveyor County Engineer

Statement of Evidence: East Quarter Corner Section 18, Township 133 North, Range 30 West,
5th Principal Meridian, Cass County, Minnesota.

The original public land survey was run in 1870, and a wood post was set to mark the corner. Bearing tree ties were made to a black pine and a dead tamarack.

On December 12, 2000, The Minnesota Department of Transportation searched the area and found no evidence of the corner or it's accessories. A two inch square telspar tube with an Aluminum cap was set at the position of an online split between Section Corners to the north and south. Bearing ties were made to two witness posts and a corner fence post. The Minnesota Department of Transportation accepts this position as the correct location for the corner.

For details and survey analysis, contact the Minnesota Department of Transportation District Surveys Office in Baxter, Minnesota.