

432817

OFFICE OF COUNTY RECORDER

State of Minnesota, County of Cass
I hereby certify that the within instrument
was filed in this office for record on the
8 day of Feb A.D. 20 01
at 9:30 O'clock A M and was duly
recorded as Micro Doc. No. 432817

Claudia Kayser
COUNTY RECORDER *for*

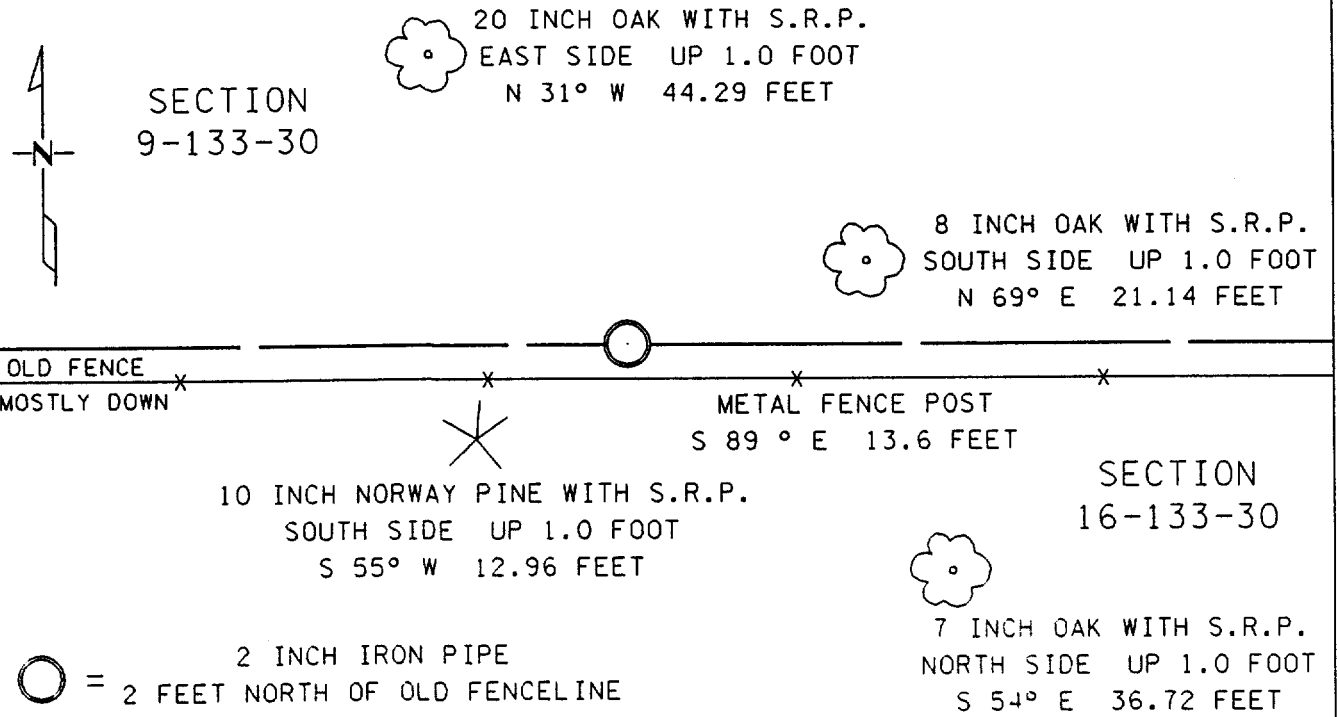
J-11

CERTIFICATE OF LOCATION OF GOVERNMENT CORNER

NORTH QUARTER Corner of Section 16, Township 133, Range 30
5 TH Principal Meridian, State of Minnesota, County of CASS

At the corner location shown on the sketch:

- On 6-29-99 found a 2 INCH IRON PIPE FLUSH
DATE
- left monument as found lowered monument removed monument (explain)
- On _____ placed a _____
DATE



Statement of evidence for this corner location is on back of this page.

I hereby certify that this document was researched and prepared by me or under my direct supervision.

Signature *James Krause* Date 1-11-2001 License No. 23668
Title: Land Surveyor Professional Engineer County Surveyor County Engineer

Statement of Evidence: North Quarter Corner Section 16, Township 133 North, Range 30 West, 5th Principal Meridian, Cass County, Minnesota.

The original public land survey was run in 1870 and a wood post was used to mark the corner. Bearing ties were made to a Norway pine and a spruce.

On June 29, 1999, with the help of long time Pillager resident John Lee, whose family has owned the surrounding land for generations, The Minnesota Department of Transportation searched the area and recovered a two inch iron pipe flush with the ground. According to Mr. Lee's testimony, his ancestors built a near-by fence in accordance with the original land survey. A very old barbed wire fence was found approximately two feet south of the pipe. The Minnesota Department of Transportation accepts this position as the correct location for the corner.

For details and survey analysis, contact the Minnesota Department of Transportation District Surveys Office in Baxter, Minnesota.