

# CERTIFICATE OF LOCATION OF GOVERNMENT CORNER

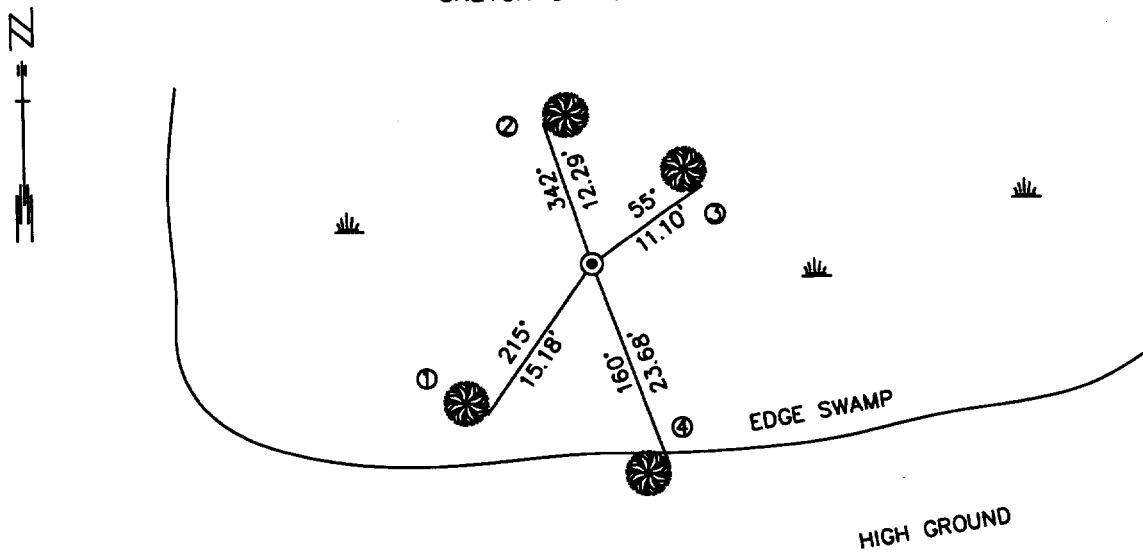
NORTH QUARTER Corner of Section 11, Township 140, Range 28, 5TH P.M.

STATE OF MINNESOTA, County of CASS

At the corner location shown on the sketch:

- On 5/16/00 found a ORIGINAL GLO BEARING TREE STUMPS  
DATE
- left monument as found,       lowered monument,       removed monument (explain)
- On 5/16/00 Placed a 1 3/4" X 48" IRON PIPE  
DATE

SKETCH OF REFERENCE TIES



- ① SET DNR RP UP 2' SE SIDE 8" ASH
- ② SET DNR RP UP 2' SW SIDE 14" ASH
- ③ SET DNR RP UP 3' SE SIDE 10" ASH
- ④ SET DNR RP UP 1' NE SIDE 10" BALSAM

AZIMUTHS ARE OBSERVED WITH A COMPASS

1983 CASS COUNTY NORTH  
COORDINATE SYSTEM  
1996 ADJUSTMENT  
N = 158286.45  
E = 508084.58

Statement of evidence relative to this corner location is on back of page.

11/9/00  
FOM 01869

I hereby certify that this document and the data contained herein was prepared by me or under my direct supervision.

John D. Walker      11/21/00  
SIGNATURE      DATE

License Number 16098

- Land Surveyor,       Professional Engineer
- County Surveyor,       County Engineer

OFFICE OF THE COUNTY RECORDER # 430976  
County of Cass

I hereby certify that this document was filed in the Co. Recorders Office at 3:10 P.M. on the 28<sup>th</sup> day of Nov. A.D., 2000

County Recorder Claudine Kaylor  
By \_\_\_\_\_, Deputy

DOCUMENT NO. 430976

**North Quarter Corner Section 11, Township 140 North, Range 28 West**

The Department of Natural Resources, Bureau of Engineering contacted the following offices for information regarding this corner:

MN Secretary of State  
Cass County Surveyor  
Widseth, Smith and Nolting of Brainerd  
Landecker and Associates of Pequot Lakes  
Landecker and Associates of Walker  
Central Minnesota Surveying  
AMI Surveyors and Mappers

1870 The US General Land Office field notes, on file in the Secretary of State's Office, show this corner to be marked with a post and the following bearing trees were marked:

Cedar 5" N 5° W 6 links (3.96')

Cedar 7" S 55° W 5 links (3.3')

The corner falls 6 chains (396') west of a creek 150 links (99') wide.

1920? Ben Clark found old bearing trees and set a 2 ½ ' x 48" iron pipe stamped 1/4 S. The 7" cedar was found to the southeast instead of the southwest and he measured easterly 280' to the center of the Boy River which was 100' wide

2000 In March, the DNR survey crew searched for the corner and bearing trees and found a 1 3/4" x 48" iron pipe lying down. On one end, the side of the pipe was stamped "1/4S" and frost had burst a the side of the pipe about 18" from the other end. The river was located..

In May, the DNR survey crew searched again for the corner and bearing trees. The remains of both Cedar bearing tree stumps were found. The remains of the stumps had no scribing, but fit Clarks distances and bearings very well. The distance to the centerline of the river was about 290'. The 1 3/4" x 48" pipe was found laying down about 50 feet northerly of the bearing trees. The DNR set a 3/4" x 24" Department Monument with the 1 3/4" x 48" pipe placed over it 18" above ground. Measured as follows:

Northeast Corner Section 10 S 89°26'31" W 2385.96'

North Quarter Section 2 N 01°43'50" E 5279.67'

For more information on our survey in this area please contact MN DNR, Bureau of Engineering, Survey Section, 1601 Minnesota Drive, Brainerd, MN 56401