

# CERTIFICATE OF LOCATION OF GOVERNMENT CORNER

NORTHEAST Corner of Section 10, Township 140, Range 28, 5TH P.M.

STATE OF MINNESOTA, County of CASS

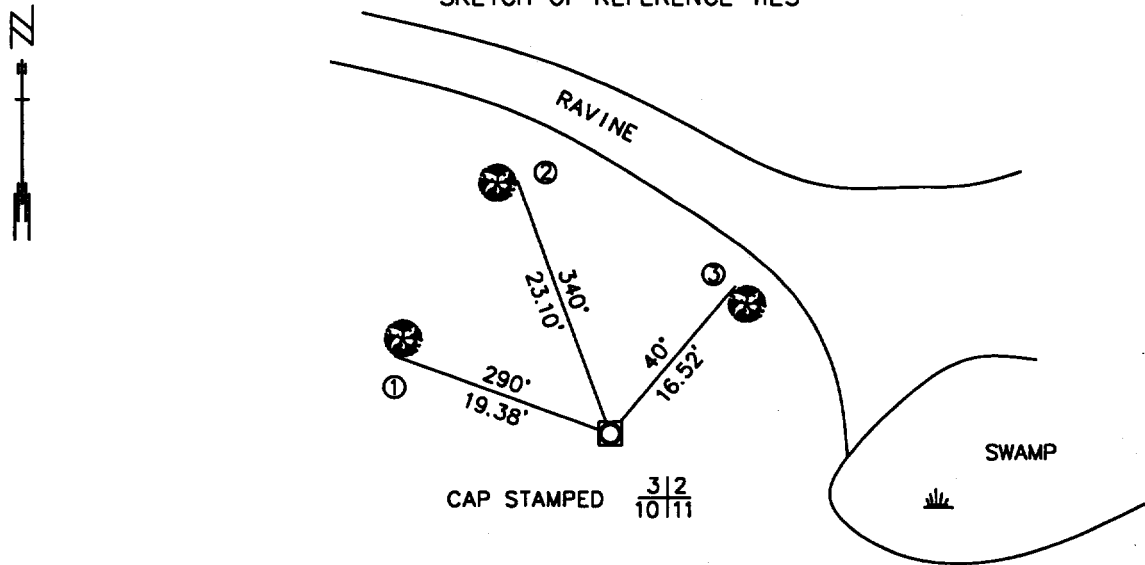
At the corner location shown on the sketch:

On 10/25/00 found a 2" BRASS CAPPED IRON PIPE  
DATE

left monument as found,  lowered monument,  removed monument (explain)

On \_\_\_\_\_ Placed on \_\_\_\_\_  
DATE

### SKETCH OF REFERENCE TIES



NOTE:  
ALL TIES ARE  
DOUBLE BLAZED

- ① SET DNR RP UP 1' SW SIDE 14" ASH
- ② SET DNR RP UP 1' E SIDE 10" ASH
- ③ SET DNR RP UP 1' N SIDE 10" ASH

AZIMUTHS ARE OBSERVED WITH A COMPASS

1983 CASS COUNTY NORTH  
COORDINATE SYSTEM  
1996 ADJUSTMENT  
N = 158263.21  
E = 505698.74

Statement of evidence relative to this corner location is on back of page.

11/9/00  
FOM01869

I hereby certify that this document and the data contained herein was prepared by me or under my direct supervision.

[Signature] 11/22/00  
SIGNATURE DATE

License Number 16098

- Land Surveyor,  Professional Engineer  
 County Surveyor,  County Engineer

OFFICE OF THE COUNTY RECORDER #430975  
County of Cass

I hereby certify that this document was filed in the Co. Recorders Office at 3:00 P.M. on the 28<sup>th</sup> day of Nov. A.D., 2000  
 County Recorder Claudia Kaylar for  
 By \_\_\_\_\_, Deputy  
 DOCUMENT NO. 430975

### Northeast Corner Section 10, Township 140 North, Range 28 West

The Department of Natural Resources, Bureau of Engineering contacted the following offices for information regarding this corner:

MN Secretary of State  
 Cass County Surveyor  
 Widseth, Smith and Nolting of Brainerd  
 Landecker and Associates of Pequot Lakes  
 Landecker and Associates of Walker  
 Central Minnesota Surveying  
 AMI Surveyors and Mappers

- 1870 The US General Land Office field notes, on file in the Secretary of State's Office, show this corner to be marked with a post and the following bearing trees were marked:  
 White Birch 9"S 55° E 23 links (15.1')  
 White Birch 7" N 29°W 15 links (9.9')  
 Red Maple 4" N 50°E 28 links (18.48')  
 Red Maple 5" S 65°W 26 links (17.2')
- 1917 Ben Clark set a 4" ironwood post proportionally 50 chains from M.C on Boy Lake and 40 chains from 1/4 corner S and marked four poplar trees.
- 1919 Ben Clark found old Govt. B.T stump: Maple 5" S 65° W 26 links and B.T.'s SE, NE, NW from above.
- 1920 Ben Clark found an old post 3' long marked S 2-3-10-11 along with all four original Govt. B.T's. Set an iron post 3" x 30", put two 40 penny spikes in bottom, set the same in ground 1 1/2', put in stone and clay around. Stamped the cap on top of post S 2-3-10-11.
- 1941 The Cass County Land Corner Record shows in Bk # 15 P. 34 that the Civilian Conservation Corp. found a 3" iron pipe 5190' from south and 25' east.
- 2000 In March, the DNR survey crew searched for the corner and bearing trees and found a 2" outside diameter galvanized iron pipe up 1' with a screw-on brass cap stamped with the section numbers. This is not like the rest of Clark's iron pipes that we found as none of the others were galvanized. No other record could be found for this corner. The pipe was accepted as marking the obliterated location of the corner. Measurements as follows:  
 East Quarter Corner Section 3 -N 01°02'22"E 2715.11'  
 North Quarter Corner Section 11 - N 89°26'31"E 2385.96  
 East Quarter Corner Section 10 - S 01°05'09"W 2647.06'

For more information on our survey in this area please contact MN DNR, Bureau of Engineering, Survey Section, 1601 Minnesota Drive, Brainerd, MN 56401