

CERTIFICATE OF LOCATION OF GOVERNMENT CORNER

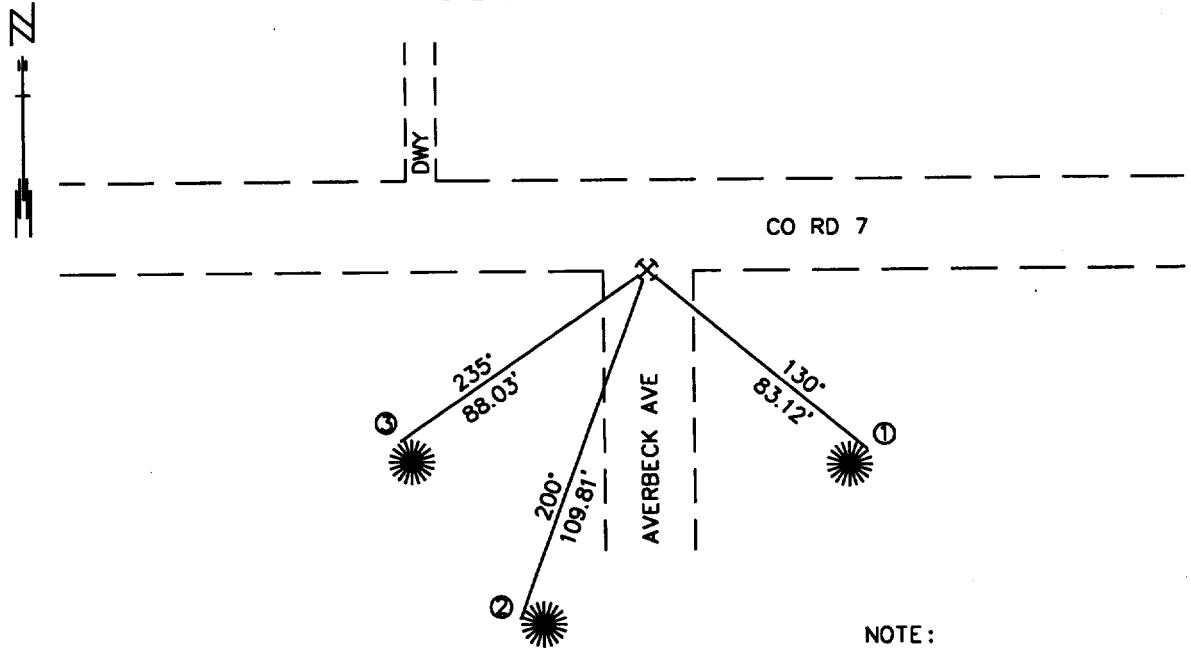
NORTHEAST Corner of Section 3, Township 140, Range 28, 5TH P.M.

STATE OF MINNESOTA, County of CASS

At the corner location shown on the sketch:

- On 10/25/00 found a SPIKE ON SOUTH EDGE OF BIT
DATE
- left monument as found, lowered monument, removed monument (explain)
- On _____ Placed a _____
DATE

SKETCH OF REFERENCE TIES



1983 CASS COUNTY NORTH
COORDINATE SYSTEM
1996 ADJUSTMENT
N = 163609.91
E = 505832.63

NOTE:

ALL TIES ARE
DOUBLE BLAZED

- ① DNR RP UP 1' NE SIDE 5" JACK PINE
- ② DNR RP UP 2' NW SIDE 9" NORWAY PINE
- ③ DNR RP UP 1' N SIDE 12" JACK PINE

AZIMUTHS ARE OBSERVED WITH A COMPASS

Statement of evidence relative to this corner location is on back of page.

11/9/00
FOM01869

I hereby certify that this document and the data contained herein was prepared by me or under my direct supervision.

John D. Walker 11/22/00
SIGNATURE DATE

License Number 16098

- Land Surveyor, Professional Engineer
- County Surveyor, County Engineer

OFFICE OF THE COUNTY RECORDER # 430972
County of Cass

I hereby certify that this document was filed in the Co. Recorders Office at 2:30 P.M. on the 22nd day of Nov. A.D., 2000
County Recorder Claudine Kaylor for
By _____, Deputy
DOCUMENT NO. 430972

Northeast Corner Section 3, Township 140 North, Range 28 West

The Department of Natural Resources, Bureau of Engineering contacted the following offices for information regarding this corner:

MN Secretary of State
 Cass County Surveyor
 Widseth, Smith and Nolting of Brainerd
 Landecker and Associates of Pequot Lakes
 Landecker and Associates of Walker
 Central Minnesota Surveying
 AMI Surveyors and Mappers

- 1870 The US General Land Office field notes, on file in the Secretary of State's Office, show this corner to be marked with a post and the following bearing trees were marked:
 Jack Pine 5" S 40° W 17 links (11.22')
 Balsam Fir 6 " S 30° E 9 links (5.94')
- 1917 J.H.Flynn found this corner. He measured easterly 2529' too the centerline of the Boy River and 42.76' to the Southeast Corner of Section 35, T141, R28.
- 1920 Ben Clark found Government post and both bearing trees. He set 3"x 30" iron pipe, put two 40 penny spikes in bottom and set the same in ground 2'. He put stone and clay around the pipe and stamped the cap on top S-2-S-3.
- 1941 CCC indicates in the Cass County Land Corner Record Bk 15 P.36 at 5280' from south. They set the approximate corner 68' south of the middle of road.
- 1977 Walt Curo surveyed some tracts in the northwest quarter of Section 2 for Averbeck. His field notes don't show a location for this corner. A partial copy of his tract map from AMI shows the section corner and a tract corner 50' south and 16.5' east of the section corner.
- 2000 In March, the DNR Survey Crew searched for the corner and bearing trees. They found and located an iron pipe probably set by Walt Curo to the SE of the intersection of County Road 7 and Averbeck Road. south. This pipe fell 50' south of the centerline of C.R. 7 and 12.5' east of the centerline of Averbeck Road. Several 1" iron pipes with ribbon posts were found along the approximate east edge of Averbeck Road. The pipes weren't in a straight line.
- 2000 In May, the DNR Survey Crew was going to set the section corner and found a spike at the approximate location on south edge of east bound lane of C.R. 7 and about 3' west of the centerline of Averbeck Road. The spike was 0.3' south of the line between the Southwest and South Quarter Corners of Section 35, T141, R28. The iron pipe found 50' south of the centerline fell 38.8' south and 16.34' east of spike. The spike was accepted as marking the obliterated location of the corner. The following measurements were made:
- | | | |
|-----------------------------------|--------------|----------|
| Southeast Corner Section 34 - | N88°53'20"W | 978.84' |
| South Quarter Corner Section 35 - | S88°53'20" E | 1650.50' |
| East Quarter Corner Section 3 - | S01°55'40"W | 2633.77' |

For more information on our survey in this area please contact MN DNR, Bureau of Engineering, Survey Section, 1601 Minnesota Drive, Brainerd, MN 56401