

CERTIFICATE OF LOCATION OF GOVERNMENT CORNER

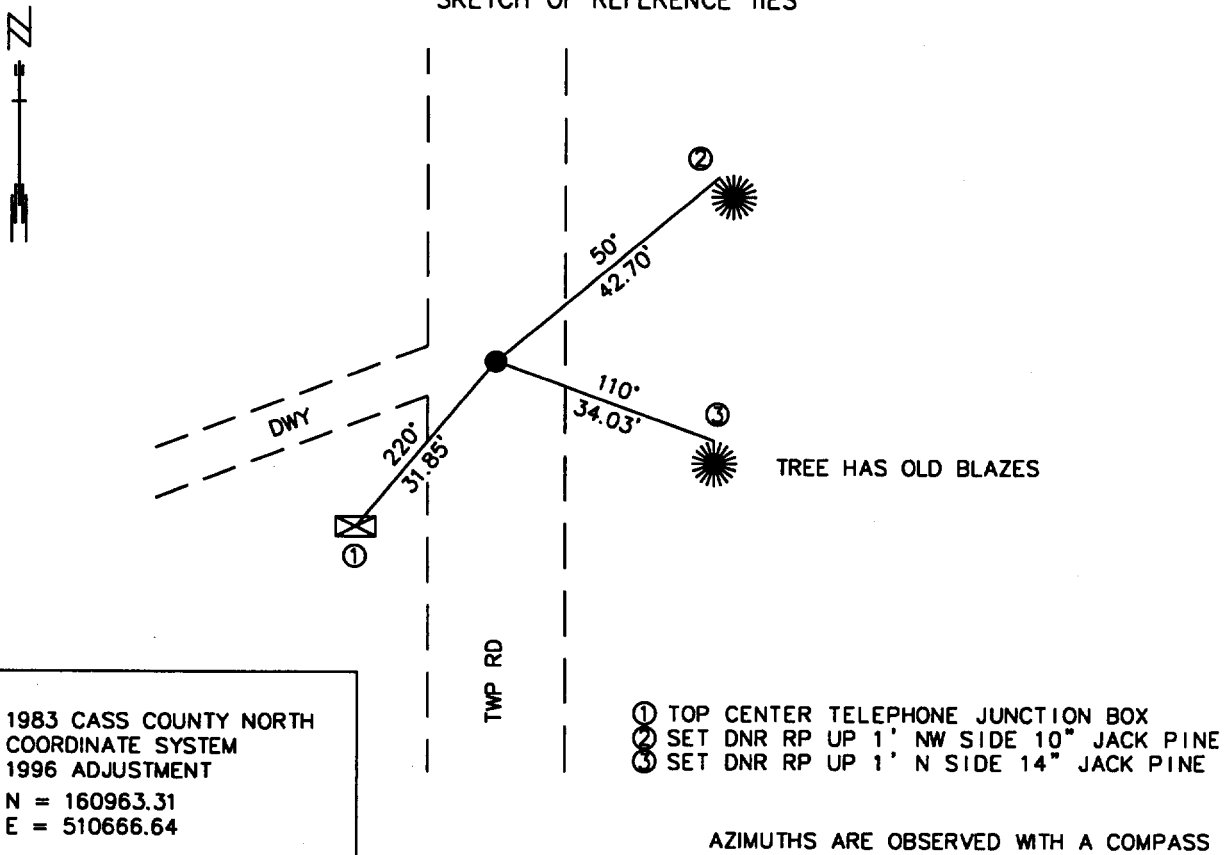
EAST QUARTER Corner of Section 2, Township 140, Range 28, 5TH P.M.

STATE OF MINNESOTA, County of CASS

At the corner location shown on the sketch:

- On 3/1/00 found a 1 1/2" I.D. IRON PIPE DOWN 0.2', 5' WEST OF THE
DATE CENTERLINE OF THE ROAD
- left monument as found, lowered monument, removed monument (explain)
- On 10/25/00 Placed TIES
DATE

SKETCH OF REFERENCE TIES



1983 CASS COUNTY NORTH
COORDINATE SYSTEM
1996 ADJUSTMENT
N = 160963.31
E = 510666.64

AZIMUTHS ARE OBSERVED WITH A COMPASS

Statement of evidence relative to this corner location is on back of page.

11/22/00
FOM01869

I hereby certify that this document and the data contained herein was prepared by me or under my direct supervision.

John D. Walker 11/22/00
SIGNATURE DATE

License Number 16098

- Land Surveyor, Professional Engineer
- County Surveyor, County Engineer

OFFICE OF THE COUNTY RECORDER * 430969
County of Cass

I hereby certify that this document was filed in the Co. Recorders Office at 2:00 P.M. on the 28th day of Nov. A.D., 2000
County Recorder Claudine Kaylar Jr.
By _____, Deputy
DOCUMENT NO. 430969

East Quarter Corner Section 2, Township 140 North, Range 28 West

The Department of Natural Resources, Bureau of Engineering contacted the following offices for information regarding this corner:

MN Secretary of State
 Cass County Surveyor
 Widseth, Smith and Nolting of Brainerd
 Landecker and Associates of Pequot Lakes
 Landecker and Associates of Walker
 Central Minnesota Surveying
 AMI Surveyors and Mappers

- 1870 The US General Land Office field notes, on file in the Secretary of State's Office, show this corner to be marked with a post and the following bearing trees were marked:
 Spruce 9" N 75° E 7 links (4.62')
 W. Pine 6" N 85° W 8 links (5.28')
- 1926 Ben Clark found an iron post. He measured 2553' from an iron post at the Northeast Corner Section 2.
- 1941 Civilian Conservation Corp. set approximate Quarter Corner at 2640' from south.
- ? AMI in a letter to the DNR states that the re-established the corner by using the original ties from a charred pine stump and the testimony of the longtime owners of the Northeast Quarter of the Southeast Quarter of Section 2 - Bill and Rose Johnson.
- 2000 In March, the DNR survey crew searched for the corner and found a 1 ½" inside diameter iron pipe, 5' west of center line N-S gravel road. Also found a 14" blazed Jack Pine southeast. The iron pipe was accepted as marking the obliterate location of the corner.
 Measured as follows:
- | | |
|---|-------------------------|
| Northeast Corner Section 2 - | N 00°15' 05" W 2554.45 |
| Closing Corner at the NE Cor. Section 2 | N 00°15' 05" W 2547.43' |
| East Quarter Corner of Section 3 | N 89°49'50" W 4918.66' |

For more information on our survey in this area please contact MN DNR, Bureau of Engineering, Survey Section, 1601 Minnesota Drive, Brainerd, MN 56401