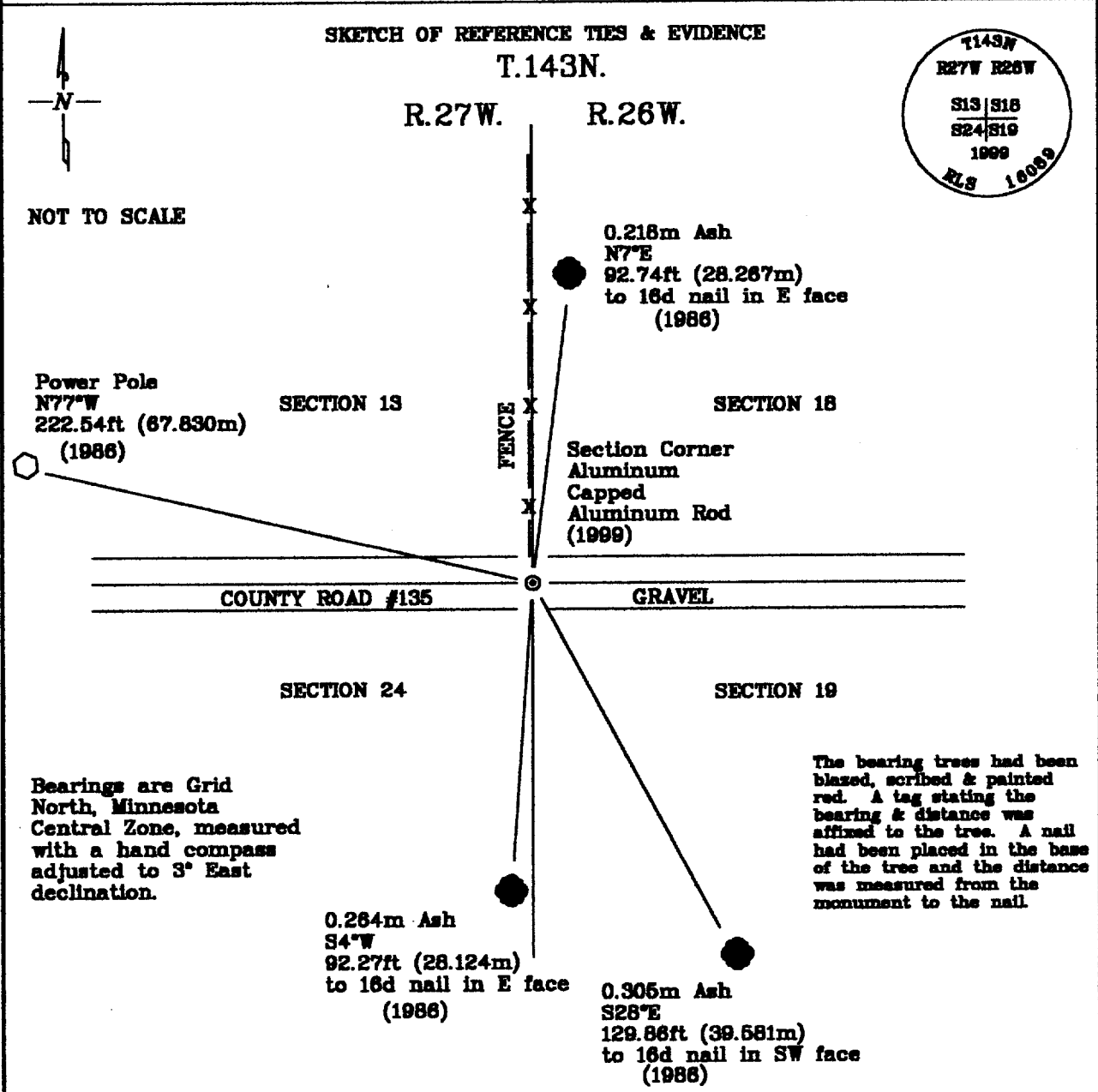


### CERTIFICATE OF LOCATION OF GOVERNMENT CORNER

Northeast Corner, Section 24, Township 143 North, Range 27 West, of the Fifth Principal Meridian, Cass County, Minnesota.

June 3, 1999 Northern Lights Surveying and Mapping, Inc., (NLSM) replaced the bent monument set by the Forest Service in 1986, with an aluminum capped, aluminum rod set 0.244m below the surface of County Road #135.



Statement of evidence relative to this corner location is on the back of this page

I hereby certify that this survey, plan, or report was prepared by me or under my direct supervision and that I am a duly Licensed Land Surveyor under the laws of the State of Minnesota.

*LaVerne Leuchling*  
 \_\_\_\_\_  
 LaVerne Leuchling  
 Licensed Land Surveyor No. 18089  
 NORTHERN LIGHTS SURVEYING & MAPPING, INC.

6-29-99  
 \_\_\_\_\_  
 Date

OFFICE OF THE COUNTY RECORDER 414545  
 County of Cass

I hereby certify that this document was filed in the Recorder's office.

Time: 9:15 A.M. Date: July 2, 1999  
 Recorder Claudine Taylor  
 By K.F. Deputy  
 DOCUMENT NO. 414545

## Statement of Evidence

Northeast Corner, Section 24, Township 14S North, Range 27 West, of the Fifth Principal Meridian, Cass County, Minnesota.

August 23, 1872; General Land Office (G.L.O.) survey notes; Deputy surveyor Eli W. Griffen set a wood post for the corner position. The original bearing trees were as follows:

0.178m Spruce N30°W 18 Links (3.621m)	0.178m Spruce S72°W 13 Links (2.815m)	0.152m Spruce S28°E 7 Links (1.408m)	0.152m Spruce N51°E 19 Links (3.822m)
---	---	--	---

Said records are of file with the Secretary of State, St. Paul, Minnesota; copies of these records are on file with the Cass County Surveyor's Office, Walker, Minnesota.

1910-1915; Cass County Road Survey by George Ralph: Book "B", p. 96, Survey Record #260; An old post was found with the following bearing trees:

0.305m Tamarack S54°30'W 8.4ft (2.560m) (1872)	0.203m Tamarack N16°30'W 7.4ft (2.256m) (1872)	0.152m Spruce SE 7.3ft (2.225m) (1872)	0.203m Tamarack N26°30'E 47.0ft (14.328m) to nail
---	---	---	---

0.305m Cedar  
S80°W  
59.2ft (18.044m) to nail

1925; Cass County Highway Engineer Record: Book 154, p.25; found the corner in place and noted the following references:

0.305m Tamarack Stump SE 43.7ft (13.320m)	Telephone Pole South 29.0ft (8.839m)
---	--

April 1986; Certificate of Location of Government Corner, Document #289685 filed in Cass County Recorders office; during a survey of National Forest boundaries, Ken Whitshorn RLS 14877, set a 2.5" (0.064m) diameter, 24" (0.610m) long galvanized iron pipe with 3" (0.064m) brass cap, 6" (0.152m) beneath CSAH #135 and referenced with the following:

0.218m Ash N7°E 92.74ft (28.267m) to 16d nail in E face	0.264m Ash S4°W 92.27ft (28.124m) to 16d nail in E face	0.305m Ash S28°E 129.86ft (39.581m) to 16d nail in SW face	Power Pole N77°W 222.54ft (67.830m)
--	--	---	---

August 1989; Traverse notes of County Road #135; C. Krause and R. Main of the United States Forest Service tied into the 2" (0.051m) pipe during their traverse. Records are kept in the Chippewa National Forest Supervisors Office.

August 1998; Northern Lights Surveying and Mapping, Inc., located the monument and found that it had been bent and out of position. At this time a spike was placed in the true corner position based on the ties, and it was GPS'd as well as tied into conventionally.

June 3, 1999; NLSM returned to site and set a 0.019m aluminum rod with a 0.083m diameter aluminum stamped cap, 1.981m long, and buried 0.244m below the surface of County Road #135. The corner references previously listed were still standing and in good condition.

Northern Lights Surveying and Mapping, Inc., Boy River Township Field Book #2, p. 42.

## Coordinates:

## Cass County North

Northing = 74256.508 meters  
Easting = 166562.002 meters

State Plane Coordinate System  
Minnesota Central Zone  
NAD 83

Northing = 344248.025 meters  
Easting = 816687.255 meters

Latitude = 47°11'49.95404" North  
Longitude = 94°01'47.23840" West