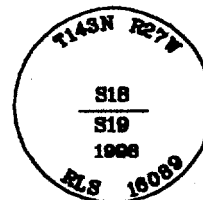


CERTIFICATE OF LOCATION OF GOVERNMENT CORNER

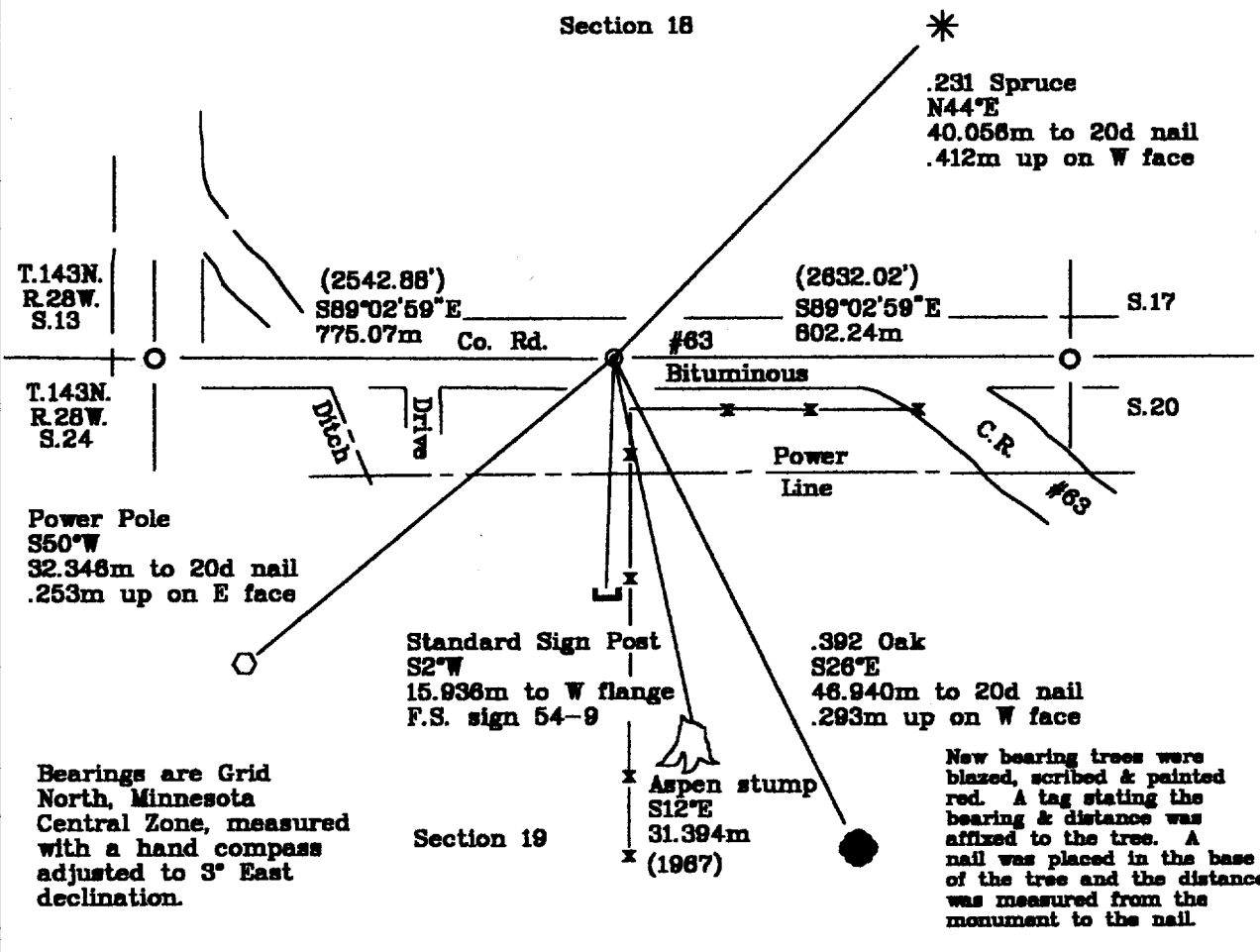
North Quarter Corner, Section 19, Township 143 North, Range 27 West, of the Fifth Principal Meridian, Cass County, Minnesota.

Dec., 1998; Northern Lights Surveying and Mapping, Inc., monumented the quarter corner with a brass capped galvanized steel pipe below the bituminous surface of road. The corner was in the centerline of County Rd. 63 and record distance from a 1987 Cass County Reference Tree. This position matches 1925 construction notes which described its position and matches a 1920 retracement survey when allowance is made for a 100' error in retracement survey.

SKETCH OF REFERENCE TIES & EVIDENCE
T.143N., R.27W.



NOT TO SCALE



Statement of evidence relative to this corner location is on the back of this page

I hereby certify that this survey, plan, or report was prepared by me or under my direct supervision and that I am a duly Licensed Land Surveyor under the laws of the State of Minnesota.

LaVerne Leuelling
LaVerne Leuelling Date 6-29-99
Licensed Land Surveyor No. 18089
NORTHERN LIGHTS SURVEYING & MAPPING, INC.

OFFICE OF THE COUNTY RECORDER 414544
County of Cass

I hereby certify that this document was filed in the Recorder's office.

Time: 9:10 A.M. Date: July 2, 1999
Recorder Claudine Taylor
By K.F. Deputy
DOCUMENT NO. 414544

Statement of Evidence

Page 2 of 3

North Quarter Corner, Section 19, Township 143 North, Range 27 West, of the Fifth Principal Meridian, Cass County, Minnesota.

1873; General Land Office (G.L.O.) survey notes; Deputy Surveyor William Allen set a post for the quarter corner 38.84 chains east of the northwest corner of section 19 and 40 chains west of the northeast corner of that section. The original Bearing Trees were:

8" (.203m) Birch	10" (0.254m) Spruce
S22°W	N60°E
22 Links (4.426m)	37 Links (7.443m)

Said records are on file with the Secretary of State, St. Paul, Minnesota; copies of these records are on file with the Cass County Surveyor's Office, Walker, Minnesota.

1910-1915; Cass County Road Survey by George Ralph; Book "B", p.96-97, Survey Record #260; found an old post and an old bearing tree stump to the SE lying on ground. He established the following new references:

6" (0.152m) Birch	12" (0.305m) Birch
N28°W	S26°E
58.5 Feet (17.830m)	86.2 Feet (26.273m)

Although some typos are present in their notes, it appears that they had a distance of 2600' to the NW corner of section 19 and a distance of 2566' to the NE corner of section 19.

1920; County Survey Record No.448, pp. 392-396; B.F. Clark found an old 4" cedar post and set an iron pipe in road.

1920; County Resurvey Plat "E-7"; E.B. Horst found an iron monument at government corner. The distance to the NW corner of section 19 was 2443.3' and was 2833.0' to the NE corner of section 19.

1925; Cass County, Highway Department, Book 154, p. 13, found 2" iron pipe "in place" in corner position in Rd #4. The corner was shown opposite a fence line and was 421' east of a field entrance and was 972' east of diagonal ditch running southeasterly. Their distance to the NE corner of section was 2564.5' and their distance was 2563' to the NW section corner.

Telephone Pole	12" (0.305m)
South	SE
30.0 Feet (9.144m)	86.2 Feet (26.274m)

1967; Cass County Engineer; Highway Department found a 2" iron pipe and noted the following references:

5" (0.127m) Basswood	6" (0.152m) Aspen	12" (0.305m) Aspen
SSE	SE	SE
83.9 Feet (25.573m)	103.0 Feet (31.394m)	114.3 Feet (34.839m)

September 1968; Northern Lights Surveying and Mapping, Inc., crew of Leuelling and Heinle used 1922 road alignment notes to locate possible position. They searched for ties and found the SE 1967 Aspen, now a stump 103.0' from the corner.

October 1968; Northern Lights Surveying and Mapping, Inc., Heinle returned to area with Cass County Surveyors Office employee B. Hippen to search for any ties. Area has been cleared. Aspen stump appeared to fit location derived from centerline and fenceline within a foot.

Statement of Evidence

Page 3 of 3

North Quarter Corner, Section 19, Township 143 North, Range 27 West, of the Fifth Principal Meridian, Cass County, Minnesota.

December 1998; Robyn Heinle returned to site to set monument. Initially the monument was set on line between the NE and NW corners of section 19 and at record distance from the NE corner of section 19. It was then moved along centerline to match the distances from the suspected 1967 Cass County Aspen Reference Tree. She set a 0.051m diameter galvanized steel pipe 0.610m, (2') below bituminous layer for the quarter corner. The following references were established:

0.231 Spruce N44°E 40.058m to 20d nail up .412m on W face	0.392 Oak S28°E 46.940m to 20d nail up .293m on W face	Power Pole S50°W 32.346m to 20d nail up .253m on E face
Standard Sign Post S2°W 15.936m from W Flange	Aspen stump S12°E 31.394m (1967)	

The resulting distance to the NE section corner is within 1 foot of the 1920 distance and it is almost exactly 100' longer than the 1920 record for the NW corner of section 19. The corner, however, fits the call to the field entrance and ditchline within 5'.

Northern Lights Surveying and Mapping, Inc., Boy River Township Field Book #2, p. 6.p

Coordinates:

Cass County North

Northing = 74177.836 meters
Easting = 157700.578 meters

State Plane Coordinate System
Minnesota Central Zone
NAD 83

Northing = 344185.811 meters
Easting = 807826.102 meters

Latitude = 47°11'47.87786" North
Longitude = 94°08'48.20964" West