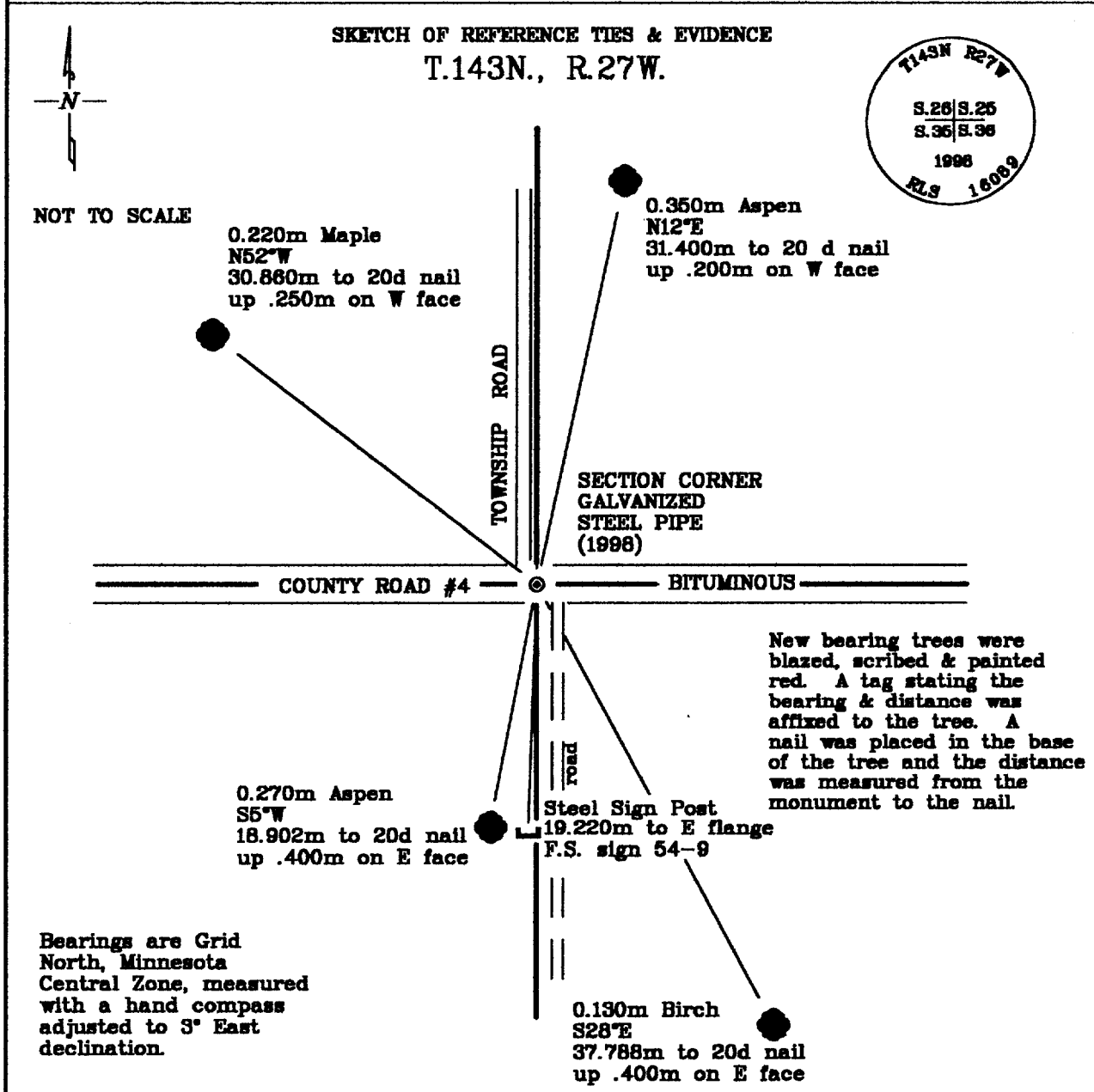


CERTIFICATE OF LOCATION OF GOVERNMENT CORNER

Northeast Corner, Section 35, Township 143 North, Range 27 West, of the Fifth Principal Meridian, Cass County, Minnesota.

November, 1998; Northern Lights Surveying and Mapping, Inc., (NLSM) set a galvanized steel pipe with a brass cap for the northeast corner of section 35. The position is a best fit approximation of the Cass County position derived from their 1915 field notes & perpetuates the evidence they found of the General Land Office corner.



Bearings are Grid North, Minnesota Central Zone, measured with a hand compass adjusted to 3° East declination.

Statement of evidence relative to this corner location is on the back of this page

I hereby certify that this survey, plan, or report was prepared by me or under my direct supervision and that I am a duly Licensed Land Surveyor under the laws of the State of Minnesota.

LaVerne Leuelling
 LaVerne Leuelling Date 5-30-1999
 Licensed Land Surveyor No. 18089
 NORTHERN LIGHTS SURVEYING & MAPPING, INC.

OFFICE OF THE COUNTY RECORDER 413418
 County of Cass

I hereby certify that this document was filed in the Recorder's office.

Time: 10:05 A.M. Date: 6-3-99
 Recorder Claudine Kaylor
 By K.F. Deputy
 DOCUMENT NO. 413418

Statement of Evidence

Northeast Corner, Section 35, Township 143 North, Range 27 West, of the Fifth Principal Meridian, Cass County, Minnesota.

September, 1873; General Land Office (G.L.O.) survey notes; Deputy Surveyor William Allen set a post for the section corner and referenced it with the following:

12" (0.305m) Tamarack	7" (0.178m) Tamarack	6" (0.152m) Tamarack	6" (0.152m) Tamarack
S40°W	S13°E	N11°W	N69°E
14 Links (2.816m)	13 Links (2.615m)	15 Links (3.018m)	11 Links (2.213m)

Said records are on file with the Secretary of State, St. Paul, Minnesota. Copies of these records are on file with the Cass County Surveyor's Office, Walker, Minnesota.

February, 1915; Cass County Record Book "B"; Survey Record #328, pp. 456-462; Curo and Donner found a 5" (0.127m) square spruce and the G.L.O. southeast bearing tree up by its roots, faintly marked, and roots which checked with the other original bearing trees. They set a 3" (0.076m) square post in accordance with these and established the following:

40" (1.016m) White Pine Stump	40" (1.108m) White Pine Stump
S24°30'E	S47°W
30.90 Feet (9.418m)	58.00 Feet (17.669)

County Distances were: N1/4 Section 36 = 2785.10 feet; N1/4 Section 35 = 2676.39 feet;
W1/4 Section 36 = 2714.80 feet.

November, 1969; United States Department of Agriculture - Forest Service (U.S.D.A.-F.S.) Field Book #1, p.20; note by William Okerman RLS 6807 states that 1915 chainage and bearing trees fit the corner location well, and that the corner could be set in the center line of the road and in line with a fence running north.

August, 1997. U.S.D.A.-F.S. Field Book #1, p. 20; R. Main and C. Krause used the centerline and fence intersection as a G.P.S. position.

October, 1998; Northern Lights Surveying and Mapping, Inc., and Cass County crews made a 4'x 30' excavation, 4 feet deep, at a search position. There was no evidence found.

November, 1998; NLSM crew of Leuelling and Heinle returned to site and set a 0.015m diameter galvanized steel pipe 0.610m long, with a brass cap, below the bituminous. the monument was set 3.3m south of the centerline of County Road #4 and 2m east of centerline of road running north, and 3.3m west of centerline of road running south. The following references were established:

0.220m Maple	0.270m Aspen	0.130m Birch
N52°W	S5°W	S28°E
30.860m to 20d nail	18.902m to 20d nail	37.788m to 20d nail
up .250m on W face	up .400m on E face	up .400m on E face
0.350m Aspen	Steel Sign Post	
N12°E	S2°W	
31.400m to 20 d nail	19.220m to E flange	
up .200m on W face	F.S. sign 54-9	

The corner was placed as a best fit approximation of the calculated position produced from the 1915 Cass County field notes. NLSM distances from this corner follow:

N1/4 35 = 815.816m (2676.56 feet); N1/4 36 = 849.062m (2785.63 feet);
W1/4 36 = 828.306m (2727.53 feet).

Northern Lights Surveying and Mapping, Inc., Boy River Township Field Book #4, p.15.

Coordinates:

State Plane Coordinate System
Minnesota Central Zone
NAD 83

Cass County North

Northing = 70896.153 meters
Easting = 164955.517 meters

Northing = 340,887.143 meters
Easting = 815,082.137 meters

Latitude = 47°10'01.26478" North
Longitude = 94°03'03.89341" West