

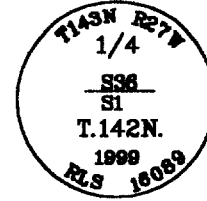
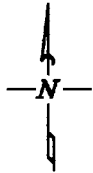
### CERTIFICATE OF LOCATION OF GOVERNMENT CORNER

North Quarter Corner, Section 1, Township 142 North, Range 27 West, of the Fifth Principal Meridian, Cass County, Minnesota.

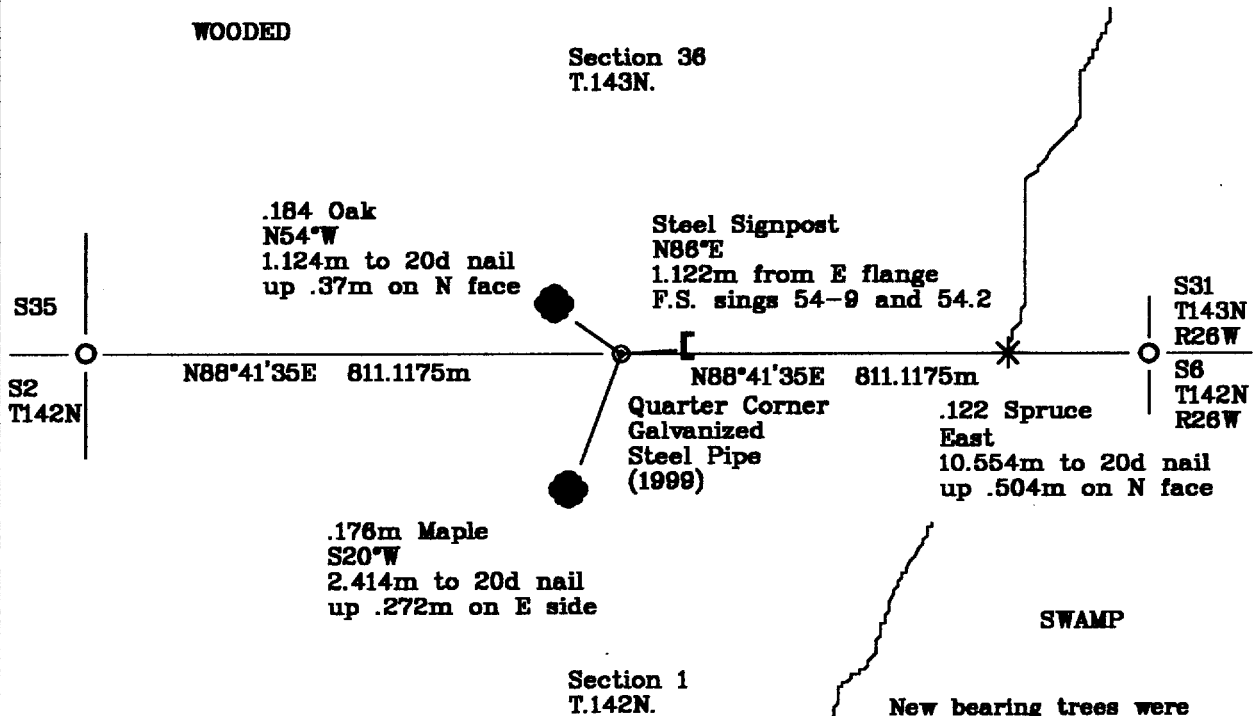
January 8, 1999; Northern Lights Surveying and Mapping, Inc., crew restored the corner midway and on line between the NE and NW corners of section 1, setting a brass capped galvanized steel pipe.

#### SKETCH OF REFERENCE TIES & EVIDENCE

T.143N., R.27W.



NOT TO SCALE



Bearings are Grid North, Minnesota Central Zone, measured with a hand compass adjusted to 3° East declination.

New bearing trees were blazed, scribed & painted red. A tag stating the bearing & distance was affixed to the tree. A nail was placed in the base of the tree and the distance was measured from the monument to the nail.

Statement of evidence relative to this corner location is on the back of this page

I hereby certify that this survey, plan, or report was prepared by me or under my direct supervision and that I am a duly Licensed Land Surveyor under the laws of the State of Minnesota.

*DeVerne Leuelling* 5-20-99  
 DeVerne Leuelling Date

Licensed Land Surveyor No. 16089  
 NORTHERN LIGHTS SURVEYING & MAPPING, INC.

OFFICE OF THE COUNTY RECORDER 413180  
 County of Cass

I hereby certify that this document was filed in the Recorder's office.

Time: 4:05 P.M. Date: May 25, 1999  
 Recorder Claudine Kayton

By K.F. Deputy  
 DOCUMENT NO. 413180

## Statement of Evidence

Page 2 of 2

North Quarter Corner, Section 1, Township 142 North, Range 27 West, of the Fifth Principal Meridian, Cass County, Minnesota.

1873; General Land Office (G.L.O.) survey notes; Deputy Surveyor P.H. Conger set a wooden post for the quarter corner. The corner was 2.5 chains (50.292m) west of the west edge of a spruce swamp. The government Bearing Trees were:

4" (0.102m) Aspen	6" (0.152m) Fir
N33°W	S48°E
8 Links (1.609m)	10 Links (2.012m)

Said records are on file with the Secretary of State, St. Paul, Minnesota. Copies of these records are on file with the Cass County Surveyor's Office, Walker, Minnesota.

1989; United States Department of Agriculture - Forest Service (U.S.D.A.-F.S.); Curt Krause chained to this area from the section corner to the west. The area was badly burned and in heavy brush; found no evidence of corner or Bearing Trees.

January 1998; Northern Lights Surveying and Mapping crew of Heinle and Luelling restored the corner midway and on line between the NE and NW corners of Section 1. Before setting the 0.051m diameter galvanized steel pipe 0.610m, brass capped monument, the distance was checked to the west edge to the spruce swamp and it was found to be 50m± 5 meters. The following references were established:

.176m Maple	.184 Oak	.122 Spruce
S20°W	N54°W	East
2.414m to 20d nail	1.124m to 20d nail	10.554m to 20d nail
up .272 on E face	up .37 on N face	up .504 on N face

Steel Sign Post  
N88°E  
1.122m to E flange  
Forest Service signs  
54-9 and Property  
Boundary signs

Northern Lights Surveying and Mapping, Inc., Boy River Township Field Book #5, p. 20.

## Coordinates:

## Cass County North

Northing = 89340.047 meters  
Easting = 185766.900 meters

State Plane Coordinate System  
Minnesota Central Zone  
NAD 83

Northing = 339,331.411 meters  
Easting = 815,894.102 meters

Latitude = 47°09'10.82123" North  
Longitude = 94°02'25.53658" West