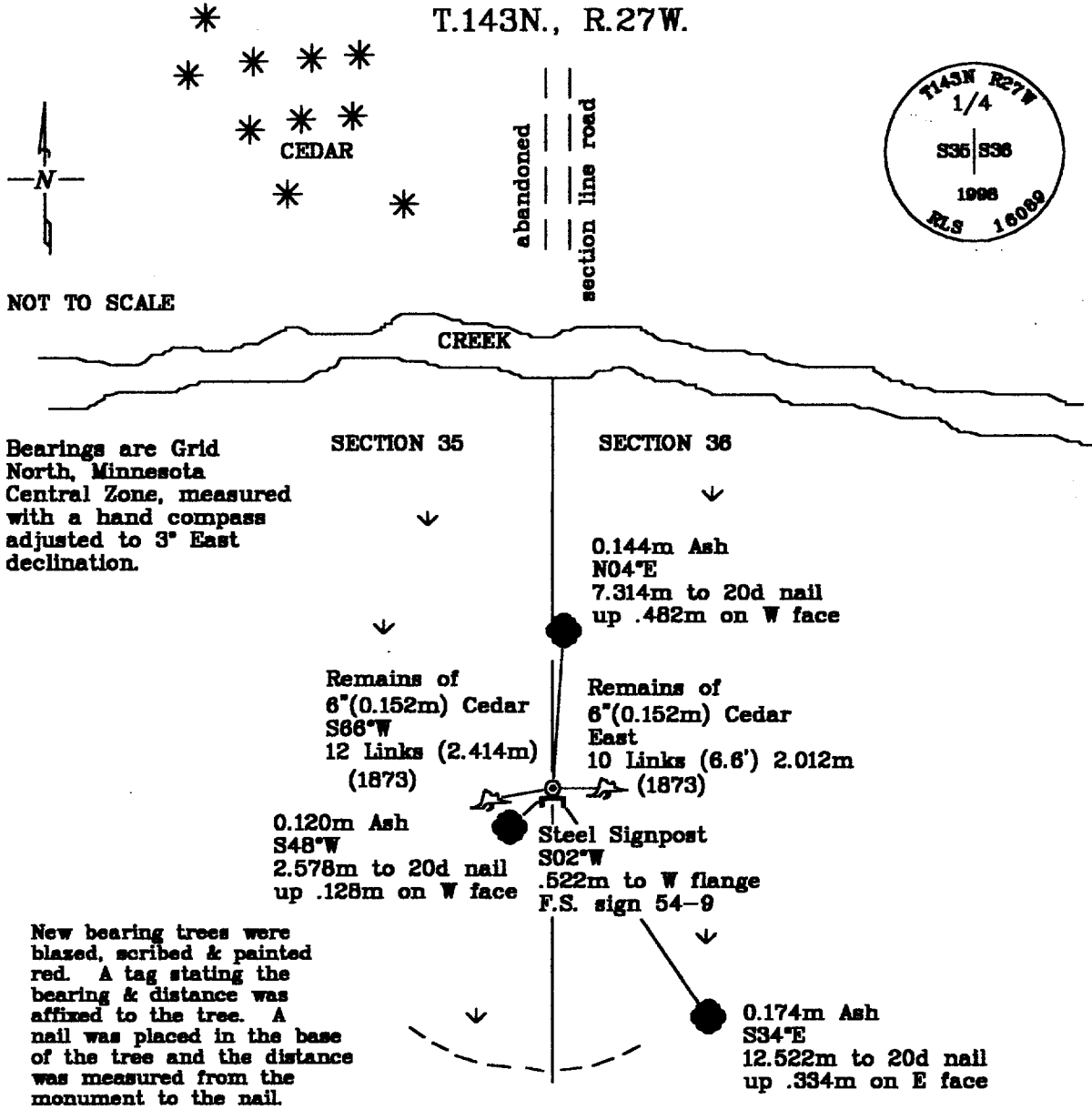


### CERTIFICATE OF LOCATION OF GOVERNMENT CORNER

East Quarter Corner, Section 35, Township 143 North, Range 27 West, of the Fifth Principal Meridian, Cass County, Minnesota.

December 5, 1998; Northern Lights Surveying and Mapping, Inc., (NLSM) set an aluminum capped aluminum rod for the quarter corner as a perpetuation of the original General Land Office (G.L.O.) position based of record bearings and distances from found original bearing trees.

#### SKETCH OF REFERENCE TIES & EVIDENCE T.143N., R.27W.



Bearings are Grid North, Minnesota Central Zone, measured with a hand compass adjusted to 3° East declination.

New bearing trees were blazed, scribed & painted red. A tag stating the bearing & distance was affixed to the tree. A nail was placed in the base of the tree and the distance was measured from the monument to the nail.

Statement of evidence relative to this corner location is on the back of this page

I hereby certify that this survey, plan, or report was prepared by me or under my direct supervision and that I am a duly licensed Land Surveyor under the laws of the State of Minnesota.

*LaVerne Leuelling* 5-13-99  
Date  
LaVerne Leuelling Date  
Licensed Land Surveyor No. 18089  
NORTHERN LIGHTS SURVEYING & MAPPING, INC.

OFFICE OF THE COUNTY RECORDER 412866  
County of Cass

I hereby certify that this document was filed in the Recorder's office.

Time: 1:05 P.M. Date: May 17, 1999  
Recorder Claudine Kaylor  
By K.F. Deputy  
DOCUMENT NO. 412866

## Statement of Evidence

Page 2 of 2

East Quarter Corner Section 35, Township 143 North, Range 27 West, of the Fifth Principal Meridian, Cass County, Minnesota.

September 1873; General Land Office (G.L.O.), Deputy Surveyor William Allen set a wood post for the corner and referenced it with the following:

6"(0.152m) Cedar East	6"(0.152m) Cedar S88°W
10 Links (6.6') 2.012m	12 Links (2.414m)

The corner fell in a cedar swamp. It was 5 chains to its south edge and 10 chains to its north edge.

Said records are on file with the Secretary of State, St. Paul, Minnesota; copies of these records are on file with the Cass County Surveyor's Office, Walker, Minnesota.

March 1915; Cass County Resurvey Record #328 Book "B" p. 458 Donner found the east Cedar from G.L.O. standing and plainly marked; He set 4"x 4"x 36" Cedar post for the corner. The corner was reputedly 2714.8' from the NE corner of section 35 and 2450' from the SE corner of section 35. The survey was undertaken to create a road along the section line between sections 35 and 36.

October 1969; United States Department of Agriculture-Forest Service, Field Book #1, p. 3, Curtis Krause Searched but found nothing. He noted that there was a line brushed north from corner location.

September 1998; Northern Lights Surveying and Mapping, Inc., cruised down an abandoned section line road to the approximate corner position and found two Cedar roots that fit the record bearings and distances for the quarter corner bearing trees.

December 5, 1998; NLSM crew returned to quarter corner location to set a 0.019m diameter aluminum rod, 1.829m long, up .232m above the ground, with a stamped 0.083m diameter aluminum cap, at record bearings and distances from the Cedar BT's previously. It was approximately 5 chains ( $\pm 1/2$  chain) to the south edge of swamp land. Going north, cedar persisted to 10 chains on the west side of the abandoned road while it gave out at 8 chains on the east side of the road. The following references were then established:

0.120m Ash S48°W 2.578m to 20d nail up .128m on W face	0.144m Ash N04°E 7.314m to 20d nail up .482m on W face	0.174m Ash S34°E 12.522m to 20d nail up .334m on E face
Steel Signpost S02°W .522m to W flange F.S. sign 54-9		

Distance to NE corner of section 35 = 828.300m (2717.51')  
Distance to SE corner of section 35 = 746.020m (2447.57')

Northern Lights Surveying and Mapping, Inc., Boy River Township Fieldbook #4, p. 43.

## Coordinates:

## Cass County North

Northing = 70089.141 meters  
Easting = 184949.007 meters

State Plane Coordinate System  
Minnesota Central Zone  
NAD 83

Northing = 340,080.156 meters  
Easting = 815,075.945 meters

Latitude = 47°09'35.13448" North  
Longitude = 94°03'04.28359" West