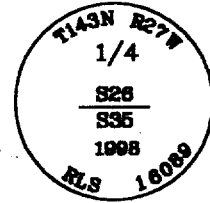


CERTIFICATE OF LOCATION OF GOVERNMENT CORNER

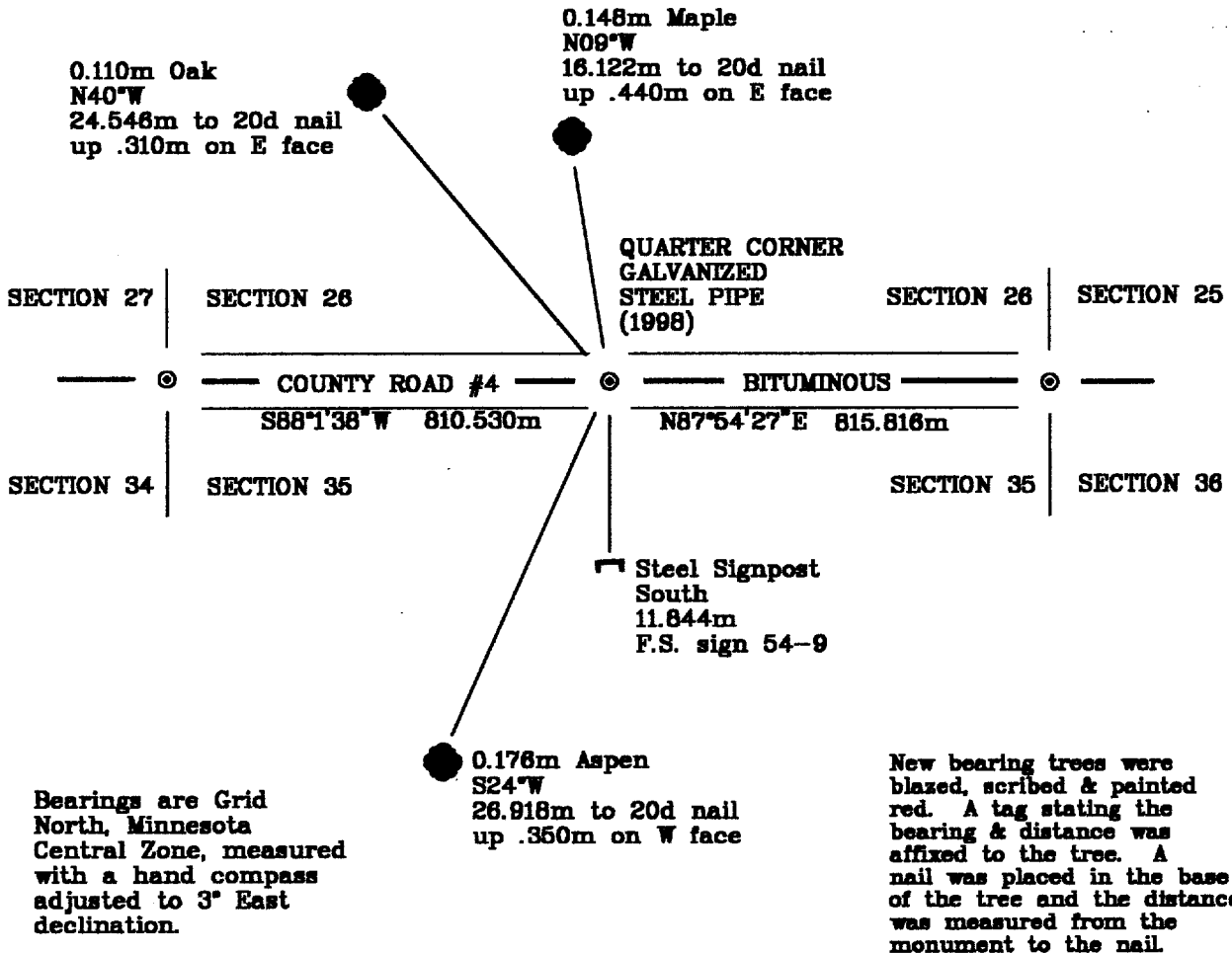
North Quarter Corner, Section 35, Township 143 North, Range 27 West, of the Fifth Principal Meridian, Cass County, Minnesota.

November 20, 1998; Northern Lights Surveying and Mapping, Inc. (NLSM) set a galvanized steel monument for the quarter corner based on a calculated position from the 1915 survey of Rt. #4 by Cass County and the finding of a spike by NLSM and Cass County crews during their search. Cass County had set the corner "lost" in 1915.

**SKETCH OF REFERENCE TIES & EVIDENCE
T.143N., R.27W.**



NOT TO SCALE



Statement of evidence relative to this corner location is on the back of this page

I hereby certify that this survey, plan, or report was prepared by me or under my direct supervision and that I am a duly Licensed Land Surveyor under the laws of the State of Minnesota.

LaVerne Leuelling 5-13-99
LaVerne Leuelling Date

Licensed Land Surveyor No. 16089
NORTHERN LIGHTS SURVEYING & MAPPING, INC.

OFFICE OF THE COUNTY RECORDER 412864
County of Cass

I hereby certify that this document was filed in the Recorder's office.

Time: 12:55 P.M. Date: May 17, 1999

Recorder Claudine Kaylor

By K.F. Deputy

DOCUMENT NO. 412864

Statement of Evidence

Page 2 of 2

North Quarter Corner Section 35, Township 143 North, Range 27 West, of the Fifth Principal Meridian, Cass County, Minnesota.

September 1873; General Land Office (G.L.O.); Deputy Surveyor William Allen set a wood post for the corner and referenced it with the following:

10"(0.254m) Fir	12"(0.305m) Birch
S41°W	N8°W
13 Links (2.615m)	43 Links (8.650m)

Said records are on file with the Secretary of State, St. Paul, Minnesota; copies of these records are on file with the Cass County Surveyor's Office, Walker, Minnesota.

February 1915; Cass County Survey Book "B", Survey Record 328, p.458-462; Curo and Donner set the quarter corner by lost methods and referenced it with the following:

10"(0.254m) White Pine stump	4"(0.102m) White Pine stump
S41°E	S60°W
85.08'(25.932m)	42.20' (12.863m)

The corner was 2676.3' (815.738m) from the SE and SW corners of section 26.

November 1969; United States Department of Agriculture-Forest Service T.143N. R.27W. Field Book #1, p.21; William Okerman searched but did not find the corner; indicated that a landowner of 20+ years had no knowledge of the corner or bearing trees.

November 1998; Northern Lights Surveying and Mapping, Inc., and Cass County crews dug a 4'x 17' area 3ft. down to natural soils in road looking for evidence. The crews found a 60d spike 1.0 ft. below the bituminous in that search position. NLSM used this position to set a brass capped 0.015m diameter galvanized steel pipe, 0.610m long under the bituminous for the quarter corner. The following references were then established:

0.176m Aspen	0.148m Maple	0.110m Oak
S24°W	N09°W	N40°W
26.918m to 20d nail	16.122m to 20d nail	24.546m to 20d nail
up .350m on W face	up .440m on E face	up .310m on E face

Steel Signpost
South
11.844m
F.S. sign 54-9

Northern Lights Surveying and Mapping, Inc., Boy River Township Field Book #4, p.12

Coordinates:

Cass County North

Northing = 70866.414 meters
Easting = 164140.232 meters

State Plane Coordinate System
Minnesota Central Zone
NAD 83

Northing = 340,857.083 meters
Easting = 814,266.891 meters

Latitude = 47°10'00.35592" North
Longitude = 94°03'42.60490" West