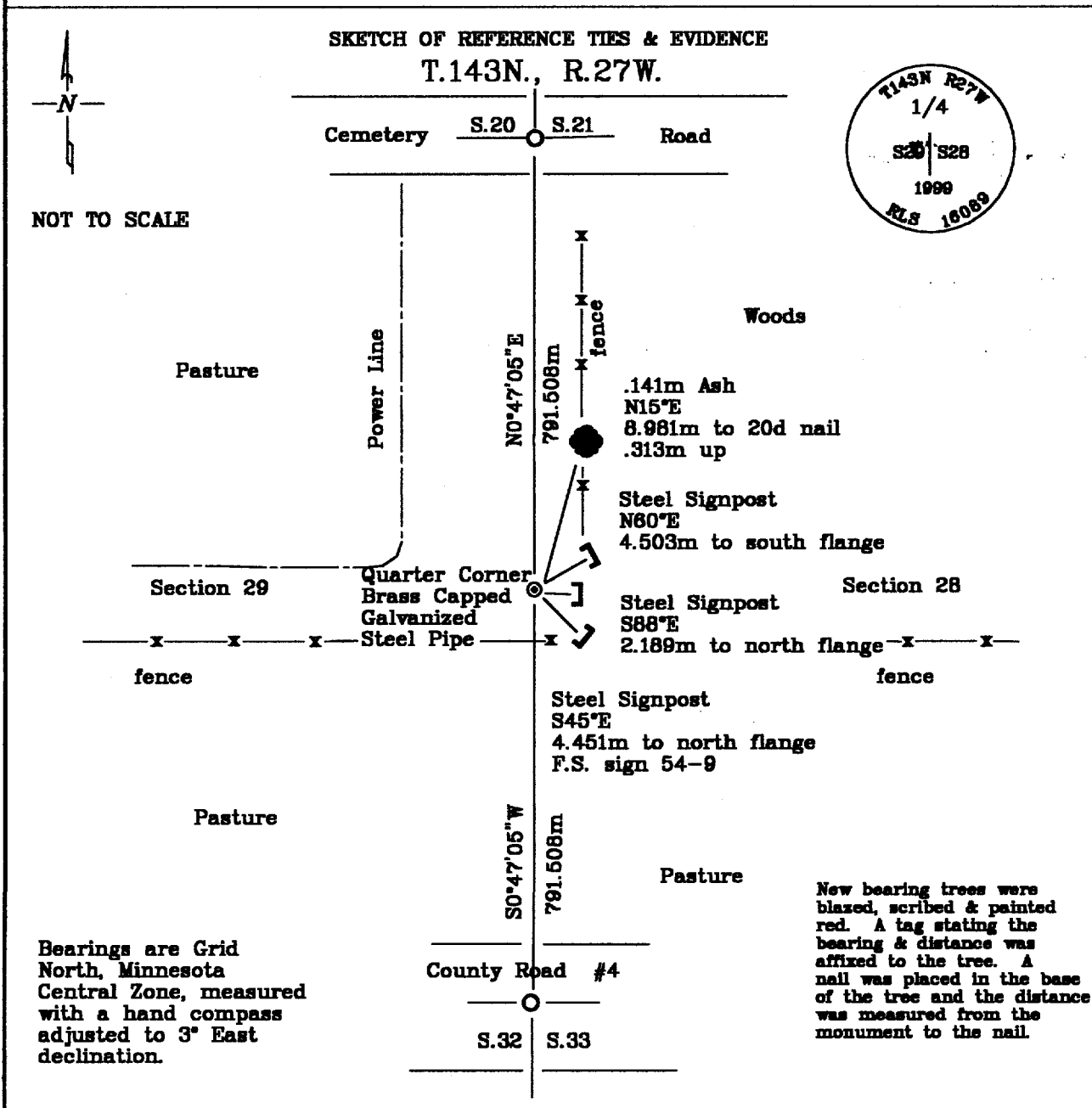


CERTIFICATE OF LOCATION OF GOVERNMENT CORNER

East Quarter Corner, Section 29, Township 143 North, Range 27 West, of the Fifth Principal Meridian, Cass County, Minnesota.

January 18, 1999; Northern Lights Surveying and Mapping, Inc., monumented the corner midway and online between the NE and SE corners of section 29 with a brass capped galvanized steel pipe.



Bearings are Grid North, Minnesota Central Zone, measured with a hand compass adjusted to 3° East declination.

Statement of evidence relative to this corner location is on the back of this page

I hereby certify that this survey, plan, or report was prepared by me or under my direct supervision and that I am a duly licensed Land Surveyor under the laws of the State of Minnesota.

J. Verne Leuelling 5-13-99
 J. Verne Leuelling Date
 Licensed Land Surveyor No. 16089
 NORTHERN LIGHTS SURVEYING & MAPPING, INC.

OFFICE OF THE COUNTY RECORDER 412856
 County of Cass

I hereby certify that this document was filed in the Recorder's office.

Time: 12:15 P.M. Date: May 17, 1999
 Recorder Claudine Kayler
 By K.F. Deputy
 DOCUMENT NO. 412856

Statement of Evidence

Page 2 of 2

East Quarter Corner, Section 29, Township 143 North, Range 27 West, of the Fifth Principal Meridian, Cass County, Minnesota.

1873; General Land Office (G.L.O.) survey notes; William Allen set a post for the Quarter corner. His bearing trees were:

14" (.366m) Aspen	7" (.178m) Birch
N15°W	S38°E
10 Links (2.011m)	22 Links (4.426m)

Said records are on file with the Secretary of State, St. Paul, Minnesota; copies of these records are on file with the Cass County Surveyor's Office, Walker, Minnesota.

1969; United States Department of Agriculture - Forest Service (U.S.D.A.-F.S.); Curt Krause looked for this corner; he did not find it and indicated that it fell near a newly constructed power line.

January 1999; Northern Lights Surveying and Mapping, Inc., crew of Heinle, Carlson and Miro set the corner midway and online between the NE and SE corners of section 29. The corner was monumented with a 0.051m diameter, 1.219m long, galvanized steel pipe .244m above ground with a brass cap. The following references were established:

0.141m Ash	Steel Signpost	Steel Signpost
N15°E	S88°E	S45°E
8.981m to 20d nail up 0.313m	2.189m to north flange	4.451m to south flange

Steel Signpost
N80°E
4.503m to north flange
F.S. sign 54-9

Northern Lights Surveying and Mapping, Inc., Boy River Township Field Book #3, p.41

Coordinates:

Cass County North

Northing = 71679.160 meters
Easting = 160088.807 meters

State Plane Coordinate System
Minnesota Central Zone
NAD 83

Northing = 341,668.181 meters
Easting = 810,215.276 meters

Latitude = 47°10'26.88722" North
Longitude = 94°06'54.91050 West