

# CERTIFICATE OF LOCATION OF GOVERNMENT CORNER

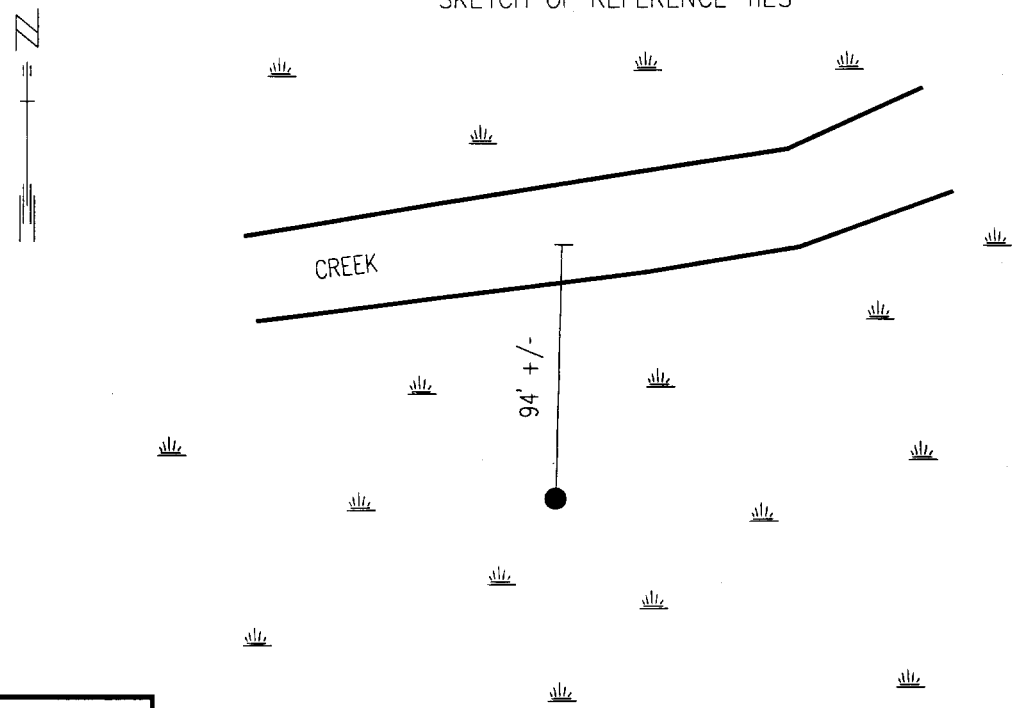
North Quarter Corner of Section 1, Township 134, Range 30, 5th P.M.

STATE OF MINNESOTA, County of Cass

At the corner location shown on the sketch:

- On \_\_\_\_\_ found a \_\_\_\_\_  
DATE
- left monument as found,  lowered monument,  removed monument (explain)
- On 3/10/99 Placed a 3/4" x24" Iron Rod with a MNDNR Survey Marker cap, up 6"  
DATE

### SKETCH OF REFERENCE TIES



NAD83 CASS CO.  
COORDINATES

N 209572.81  
E 516136.40

NO TIES AVAILABLE

Statement of evidence relative to this corner location is on back of page.

5/99  
FOM01856

I hereby certify that this document and the data contained herein was prepared by me or under my direct supervision.

Johnd Walker 5/3/99  
SIGNATURE DATE

License Number 16098

- Land Surveyor,  Professional Engineer
- County Surveyor,  County Engineer

OFFICE OF THE COUNTY RECORDER 412429  
County of Cass

I hereby certify that this document was filed in the Co. recorders office at 10:35 A.M. on the 5th day of May A.D., 19 99

County Recorder Claudine Kaylor  
By K.F., Deputy

DOCUMENT NO. 412429

**North Quarter Corner Section 1, Township 134 North, Range 30 West**

The Department of Natural Resources, Bureau of Engineering contacted the following offices for information regarding this corner:

MN Secretary of State  
Cass County Surveyor  
Cass County Highway Engineer  
Central Minnesota Surveying of Brainerd  
Widseth, Smith and Nolting of Brainerd  
Landecker and Associates of Pequot Lakes

1858 The U.S. General Land Office field notes, on file in the Secretary of State's Office, show this corner to be marked with a post, 5 chains(330') west of a creek and the following bearing trees are marked:

Tamarack 10" S 72° E 494 links (326.04')  
Tamarack 9" N 87° E 572 links (377.52')

1997 In January, this corner and the northwest corner of section 1 were searched, but not found. Landecker and Associates started a survey of section 2 and needed to established the corners along the township line. They found the northwest corner of section 2 and a position for the northeast corner of section 1 was computed from a witness corner. They computed the corners in between lost and searched for them without finding anything. They set the north quarter and northeast corners of section 2 lost.

1999 In March, a 3/4" x 24" rebar with a MN DNR SURVEY MARKER cap was set in an open bog to mark the corner at the lost position between section corners . The corner falls 94' +/- south of the center line of a creek.

For more information on this corner please contact MN DNR, Bureau of Engineering, Survey Section, 500 Lafayette Road, St. Paul, MN 55155-4029