

CERTIFICATE OF LOCATION OF GOVERNMENT CORNER

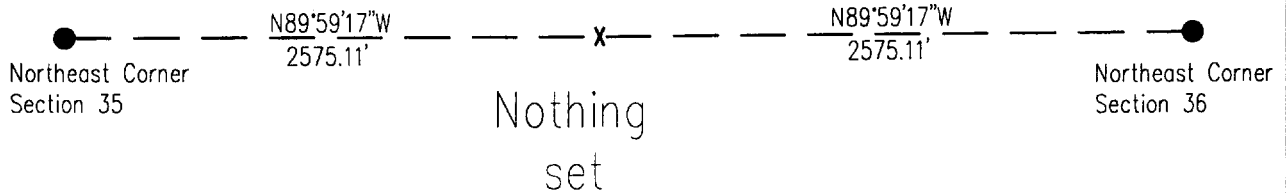
North Quarter Corner of Section 36, Township 135, Range 30, 5th P.M.

STATE OF MINNESOTA, County of Cass

At the corner location shown on the sketch:

- On _____ found a _____
DATE
- left monument as found, lowered monument, removed monument (explain)
- On _____ Placed a Nothing
DATE

SKETCH OF REFERENCE TIES



| |
|-------------------------------|
| NADB3 CASS CO. COORDINATES |
| N 214842.66 E 516187.74 |

Statement of evidence relative to this corner location is on back of page.

5/99
FOM01856

I hereby certify that this document and the data contained herein was prepared by me or under my direct supervision.

John D. Walker 5/3/99
SIGNATURE DATE

License Number 16098

- Land Surveyor, Professional Engineer
- County Surveyor, County Engineer

OFFICE OF THE COUNTY RECORDER 412425
County of Cass

I hereby certify that this document was filed in the Co. recorders office at 10:15 A.M. on the 5th day of May A.D., 19 99

County Recorder Claudine Kaylor

By K.F., Deputy

DOCUMENT NO. 412425

North Quarter Corner Section 36, Township 135 North, Range 30 West

The Department of Natural Resources, Bureau of Engineering contacted the following offices for information regarding this corner:

MN Secretary of State
Cass County Surveyor
Cass County Highway Engineer
Central Minnesota Surveying of Brainerd
Widseth, Smith and Nolting of Brainerd
Landecker and Associates of Pequot Lakes

1869 The U.S. General Land Office field notes, on file in the Secretary of State's Office, show this corner to be marked with a post and the following bearing trees are marked:

Tamarack 4" N 2°W 8 links (5.28')
Tamarack 6" S 15° W 12 links (7.92')

1997 DNR survey crew searched for evidence at this corner. A fence intersection was located with a fence west, north and south, 10' north of the south end of the fence. No evidence of bearing trees or iron monuments were found. The area is very wet. The lost position was also searched as it falls 12.7' west and 23.6' north of the fence intersection. I decided to use the lost position for this corner as the fence along the north line of the section is approximately 33' south of the line near the northwest corner of section 36 and the fences don't match with the section and quarter lines any where in the section except for the center of section. At the center of section, a fence corner with fences west and south is 47' south of the corner, but it is only 1.9' east of the north - south quarter line.
The lost position was accepted as the best location for the corner.

1999 Staking of the interior lines of the northwest quarter was completed in the winter of 1998-99. We requested permission from Terry Stumvoll , owner of the southwest quarter of section 25 and the northeast quarter of the northwest quarter of section 36, if we could cross his property to set the corner. He denied permission as he doesn't agree with the our survey of section 36. No monument set.

For more information on this corner please contact MN DNR, Bureau of Engineering, Survey Section, 500 Lafayette Road, St. Paul, MN 55155-4029.